

For Research Use Only

# RB1CC1 Polyclonal antibody

Catalog Number:10043-2-AP

Featured Product

21 Publications



## Basic Information

**Catalog Number:**

10043-2-AP

**Concentration:**

1500 ug/ml

**Source:**

Rabbit

**Isotype:**

IgG

**GenBank Accession Number:**

BC017556

**GeneID (NCBI):**

9821

**UNIPROT ID:**

Q8TDY2

**Full Name:**

RB1-inducible coiled-coil 1

**Calculated MW:**

1594 aa, 183 kDa

**Observed MW:**

180-200 kDa

**Purification Method:**

Antigen affinity purification

**Recommended Dilutions:**

WB 1:500-1:2000

IHC 1:20-1:200

IF/ICC 1:10-1:100

## Applications

**Tested Applications:**

WB, IHC, IF/ICC, ELISA

**Cited Applications:**

WB, IHC, IF, IP

**Species Specificity:**

human, mouse, rat

**Cited Species:**

human, mouse, rat

**Note-IHC: suggested antigen retrieval with TE buffer pH 9.0; (\*) Alternatively, antigen retrieval may be performed with citrate buffer pH 6.0**

**Positive Controls:**

**WB** : HeLa cells, Jurkat cells, mouse brain tissue, MCF-7 cells

**IHC** : human breast cancer tissue, human testis tissue

**IF/ICC** : HeLa cells,

## Background Information

RB1CC1, also named as RBICC, is implicated in the regulation of RB1 expression and functions as a DNA-binding transcription factor. It is a potent regulator of the RB1 pathway and a mediator that plays a crucial role in muscular differentiation[PMID:15968549]. Its expression is, thus, a prerequisite for myogenic differentiation. Involved in autophagy. RB1CC1 is required for autophagosome formation [PMID: 19258318]. It is probably involved in the tumorigenesis of breast cancer[PMID: 14533007]. RB1CC1 is frequently mutated in breast cancer and shows characteristics of a classical tumor suppressor gene[PMID: 21602932]. The immunogen of this antibody is C-terminal 154aa of RB1CC1.

## Notable Publications

Author	Pubmed ID	Journal	Application
Jiangwei Zhang	26344566	Nat Cell Biol	IF
Liang Ge	25432021	Elife	WB
Chi-Jing Choong	33218272	Autophagy	WB

## Storage

**Storage:**

Store at -20°C. Stable for one year after shipment.

**Storage Buffer:**

PBS with 0.02% sodium azide and 50% glycerol, pH7.3

Aliquoting is unnecessary for -20°C storage

For technical support and original validation data for this product please contact:

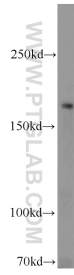
T: 4006900926

E: Proteintech-CN@ptglab.com

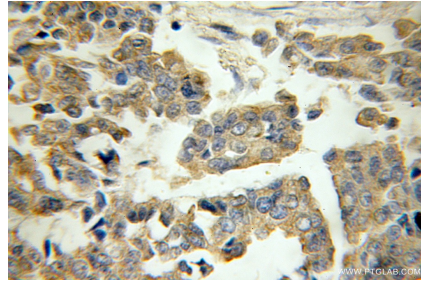
W: ptgcn.com

**This product is exclusively available under Proteintech Group brand and is not available to purchase from any other manufacturer.**

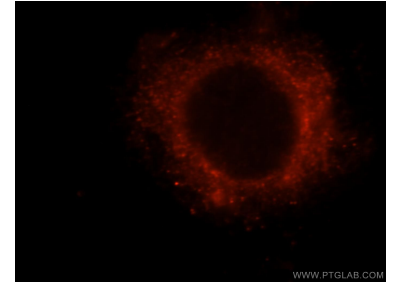
## Selected Validation Data



HeLa cells were subjected to SDS PAGE followed by western blot with 10043-2-AP (RB1CC1 antibody) at dilution of 1:1000 incubated at room temperature for 1.5 hours.



Immunohistochemical analysis of paraffin-embedded human breast cancer using 10043-2-AP (RB1CC1 antibody) at dilution of 1:200 (under 40x lens).



Immunofluorescent analysis of HeLa cells, using RB1CC1 antibody 10043-2-AP at 1:25 dilution and Rhodamine-labeled goat anti-rabbit IgG (red).