

For Research Use Only

# SNAPIN Polyclonal antibody

Catalog Number: 10055-1-AP **13 Publications**



## Basic Information

<b>Catalog Number:</b> 10055-1-AP	<b>GenBank Accession Number:</b> BC000761	<b>Purification Method:</b> Antigen affinity purification
<b>Size:</b> 400 µg/ml	<b>GeneID (NCBI):</b> 23557	<b>Recommended Dilutions:</b> WB 1:200-1:1000
<b>Source:</b> Rabbit	<b>UNIPROT ID:</b> O95295	IP 0.5-4.0 µg for 1.0-3.0 mg of total protein lysate
<b>Isotype:</b> IgG	<b>Full Name:</b> SNAP-associated protein	IHC 1:50-1:500
<b>Immunogen Catalog Number:</b> AG0101	<b>Calculated MW:</b> 15 kDa	IF/ICC 1:50-1:500
	<b>Observed MW:</b> 15-18 kDa	

## Applications

<b>Tested Applications:</b> WB, IHC, IF/ICC, IP, ELISA	<b>Positive Controls:</b> WB : A375 cells, HEK-293 cells, rat brain tissue
<b>Cited Applications:</b> WB, IHC, IF	IP : mouse brain tissue,
<b>Species Specificity:</b> human, mouse, rat	IHC : human testis tissue, human brain tissue
<b>Cited Species:</b> human, mouse	IF/ICC : HepG2 cells,
<b>Note-IHC: suggested antigen retrieval with TE buffer pH 9.0; (*) Alternatively, antigen retrieval may be performed with citrate buffer pH 6.0</b>	

## Background Information

Snapin, a protein of relative molecular weight of 15kd, is implicated in neurotransmission by binding to SNAP-25. Snapin was enriched in neurons and exclusively located on synaptic vesicle membrane, which may be a PKA target for modulating transmitter release through the cAMP-dependent signal-transduction pathway. This antibody can recognize the 15-18kd(Monomer) and 30-36kd(Dimer) forms of SNAPIN.

## Notable Publications

Author	Pubmed ID	Journal	Application
Przemyslaw A Filipek	28993467	J Cell Biol	WB
Kelsey Michelle Wells	35587649	Elife	WB
Mengxue Jiang	34194388	Front Endocrinol (Lausanne)	WB, IHC, IF

## Storage

**Storage:**  
Store at -20°C. Stable for one year after shipment.  
**Storage Buffer:**  
PBS with 0.02% sodium azide and 50% glycerol pH 7.3.  
Aliquoting is unnecessary for -20°C storage

For technical support and original validation data for this product please contact:

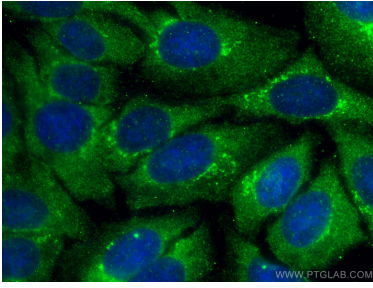
T: 4006900926

E: Proteintech-CN@ptglab.com

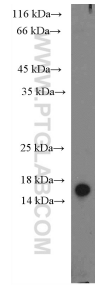
W: ptgcn.com

**This product is exclusively available under Proteintech Group brand and is not available to purchase from any other manufacturer.**

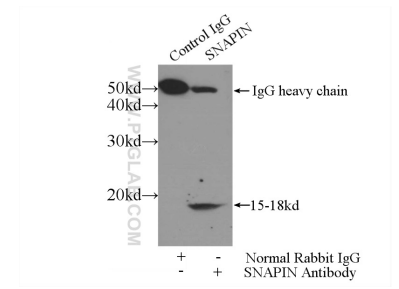
## Selected Validation Data



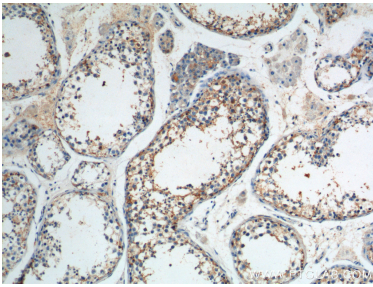
Immunofluorescent analysis of (-20°C Ethanol) fixed HepG2 cells using SNAPIN antibody (10055-1-AP) at dilution of 1:200 and CoraLite®488-Conjugated AffiniPure Goat Anti-Rabbit IgG(H+L).



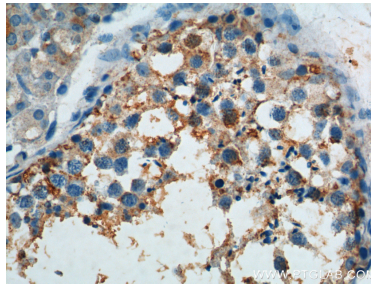
A375 cells were subjected to SDS PAGE followed by western blot with 10055-1-AP (SNAPIN Antibody) at dilution of 1:300 incubated at room temperature for 1.5 hours.



IP result of anti-SNAPIN (IP:10055-1-AP, 5ug; Detection:10055-1-AP 1:300) with mouse brain tissue lysate 4000ug.



Immunohistochemical analysis of paraffin-embedded human testis tissue slide using 10055-1-AP (SNAPIN Antibody) at dilution of 1:200 (under 10x lens).



Immunohistochemical analysis of paraffin-embedded human testis tissue slide using 10055-1-AP (SNAPIN Antibody) at dilution of 1:200 (under 40x lens).