

For Research Use Only

# FKBPL Polyclonal antibody

Catalog Number:10060-1-AP

Featured Product

22 Publications



## Basic Information

**Catalog Number:**

10060-1-AP

**Size:**

500 µg/ml

**Source:**

Rabbit

**Isotype:**

IgG

**Immunogen Catalog Number:**

AG0112

**GenBank Accession Number:**

BC004168

**GeneID (NCBI):**

63943

**UNIPROT ID:**

Q9UIM3

**Full Name:**

FK506 binding protein like

**Calculated MW:**

349 aa, 38 kDa

**Observed MW:**

42-48 kDa

**Purification Method:**

Antigen affinity purification

**Recommended Dilutions:**

WB 1:1000-1:4000

IP 0.5-4.0 µg for 1.0-3.0 mg of total protein lysate

IHC 1:300-1:1200

## Applications

**Tested Applications:**

WB, IHC, FC (Intra), IP, ELISA

**Cited Applications:**

WB, IHC, IF, ChIP

**Species Specificity:**

human

**Cited Species:**

human, mouse, rat

**Note-IHC: suggested antigen retrieval with TE buffer pH 9.0; (\*) Alternatively, antigen retrieval may be performed with citrate buffer pH 6.0**

**Positive Controls:**

**WB :** HEK-293 cells, HeLa cells, human brain tissue, human testis tissue, Jurkat cells, MCF-7 cells, T-47D cells, MDA-MB-453s cells

**IP :** MCF-7 cells,

**IHC :** human breast cancer tissue, human testis tissue

## Background Information

FKBPL, also named as DIR1, NG7 and WISp39, has similarity to the immunophilin protein family, which plays a role in immunoregulation and basic cellular processes involving protein folding and trafficking. FKBPL levels may be a prognostic indicator and determinant of response to endocrine therapy (PMID:20103631, 15664193). It can be detected the band between 38 kDa and 48 kDa by western blot.

## Notable Publications

Author	Pubmed ID	Journal	Application
Rachel Bennett	26419658	Nanomedicine (Lond)	WB, IHC
Daniilo D. Obradović	36295491	Medicina (Kaunas)	IHC
Eoghan J Mulholland	31676385	J Control Release	WB

## Storage

**Storage:**

Store at -20°C. Stable for one year after shipment.

**Storage Buffer:**

PBS with 0.02% sodium azide and 50% glycerol pH 7.3.

Aliquoting is unnecessary for -20°C storage

For technical support and original validation data for this product please contact:

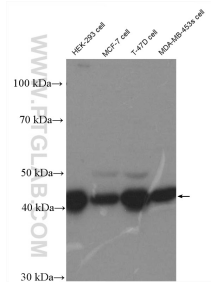
T: 4006900926

E: Proteintech-CN@ptglab.com

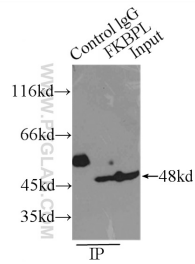
W: ptgcn.com

**This product is exclusively available under Proteintech Group brand and is not available to purchase from any other manufacturer.**

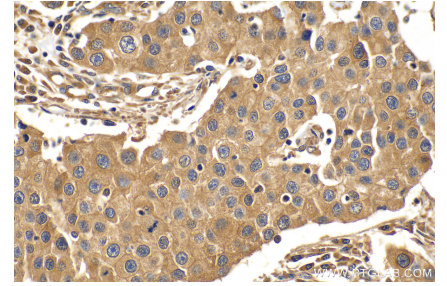
## Selected Validation Data



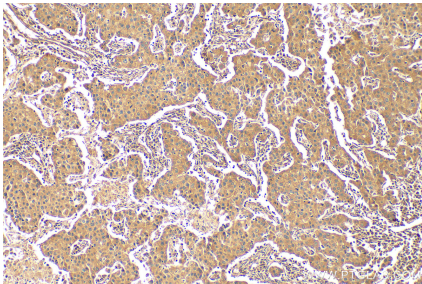
Various lysates were subjected to SDS PAGE followed by western blot with 10060-1-AP (FKBPL antibody) at dilution of 1:2000 incubated at room temperature for 1.5 hours.



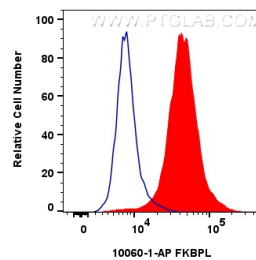
IP result of anti-FKBPL (IP:10060-1-AP, 3ug; Detection:10060-1-AP 1:800) with MCF-7 cells lysate 2500ug.



Immunohistochemical analysis of paraffin-embedded human breast cancer tissue slide using 10060-1-AP (FKBPL antibody) at dilution of 1:600 (under 40x lens). Heat mediated antigen retrieval with Tris-EDTA buffer (pH 9.0).



Immunohistochemical analysis of paraffin-embedded human breast cancer tissue slide using 10060-1-AP (FKBPL antibody) at dilution of 1:600 (under 10x lens). Heat mediated antigen retrieval with Tris-EDTA buffer (pH 9.0).



$1 \times 10^6$  HeLa cells were intracellularly stained with 0.4 ug FKBPL Polyclonal antibody (10060-1-AP) and CoraLite<sup>®</sup>488-Conjugated Goat Anti-Rabbit IgG(H+L) (SA00013-2)(red), or 0.4 ug Rabbit IgG control Rabbit PolyAb (30000-0-AP) (blue). Cells were fixed with 4% PFA and permeabilized with Flow Cytometry Perm Buffer (PF00011-C).