

For Research Use Only

HINFP Polyclonal antibody

Catalog Number: 10066-2-AP

Featured Product

1 Publications



Basic Information

Catalog Number:

10066-2-AP

Size:

450 µg/ml

Source:

Rabbit

Isotype:

IgG

Immunogen Catalog Number:

AG0115

GenBank Accession Number:

BC001073

GeneID (NCBI):

25988

UNIPROT ID:

Q9BQA5

Full Name:

histone H4 transcription factor

Calculated MW:

60 kDa

Observed MW:

60-70 kDa

Purification Method:

Antigen affinity purification

Recommended Dilutions:

WB 1:1000-1:4000

IP 0.5-4.0 µg for 1.0-3.0 mg of total protein lysate

IF/ICC 1:10-1:100

Applications

Tested Applications:

WB, IF/ICC, IP, ELISA

Cited Applications:

WB, IHC, IF

Species Specificity:

human, mouse, rat

Cited Species:

human

Positive Controls:

WB : HepG2 cells, human liver tissue, mouse liver tissue, rat liver tissue, L02 cells

IP : L02 cells,

IF/ICC : HeLa cells, L02 cells

Background Information

Methylation of CpG dinucleotides is the major epigenetic modification in higher eukaryotic genomes. MIZF interacts with MBD2, a methyl-CpG-binding protein playing a critical role in DNA methylation-mediated transcriptional repression. MIZF functions as a negative regulator of transcription by binding to MBD2 and recruiting histone deacetylase (HDAC)-containing complexes. MIZF mRNA is present in various human tissues and cell lines and expressed as a 60kd protein.

Notable Publications

Author	Pubmed ID	Journal	Application
Xianchong Zheng	35668172	Oncogene	WB,IHC,IF

Storage

Storage:

Store at -20°C. Stable for one year after shipment.

Storage Buffer:

PBS with 0.02% sodium azide and 50% glycerol pH 7.3.

Aliquoting is unnecessary for -20°C storage

For technical support and original validation data for this product please contact:

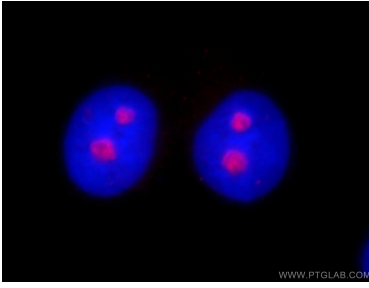
T: 4006900926

E: Proteintech-CN@ptglab.com

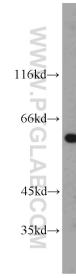
W: ptgcn.com

This product is exclusively available under Proteintech Group brand and is not available to purchase from any other manufacturer.

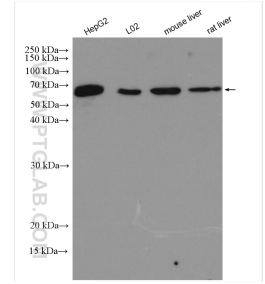
Selected Validation Data



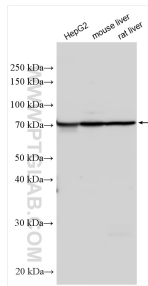
Immunofluorescent analysis of fixed HeLa cells using 10066-2-AP (HINFP antibody) at dilution of 1:25 and Rhodamine-Goat anti-Rabbit IgG.



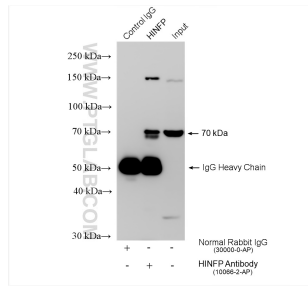
human liver tissue were subjected to SDS PAGE followed by western blot with 10066-2-AP (HINFP antibody) at dilution of 1:300 incubated at room temperature for 1.5 hours.



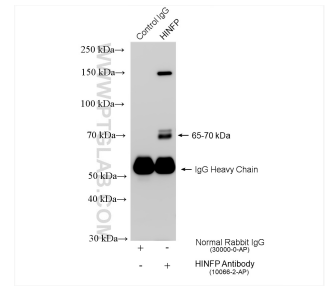
Various lysates were subjected to SDS PAGE followed by western blot with 10066-2-AP (HINFP antibody) at dilution of 1:3000 incubated at room temperature for 1.5 hours.



Various lysates were subjected to SDS PAGE followed by western blot with 10066-2-AP (HINFP antibody) at dilution of 1:2000 incubated at room temperature for 1.5 hours.



IP result of anti-HINFP (IP:10066-2-AP, 4ug; Detection:10066-2-AP 1:2000) with L02 cells lysate 1040 ug.



IP result of anti-HINFP (IP:10066-2-AP, 4ug; Detection:10066-2-AP 1:2000) with L02 cells lysate 1040 ug.