

For Research Use Only

# ELAC2 Polyclonal antibody

Catalog Number: 10071-1-AP

Featured Product

12 Publications



## Basic Information

**Catalog Number:**

10071-1-AP

**Size:**

280 µg/ml

**Source:**

Rabbit

**Isotype:**

IgG

**Immunogen Catalog Number:**

AG0105

**GenBank Accession Number:**

BC004158

**GeneID (NCBI):**

60528

**UNIPROT ID:**

Q9BQ52

**Full Name:**

elaC homolog 2 (E. coli)

**Calculated MW:**

92 kDa

**Observed MW:**

92 kDa

**Purification Method:**

Antigen affinity purification

**Recommended Dilutions:**

WB 1:200-1:1000

IHC 1:50-1:500

## Applications

**Tested Applications:**

IHC, WB, ELISA

**Cited Applications:**

WB, IF

**Species Specificity:**

human, mouse, rat

**Cited Species:**

human, mouse, rabbit

**Positive Controls:**

WB : DU 145 cells, HeLa cells, HepG2 cells

IHC : mouse testis tissue,

**Note-IHC: suggested antigen retrieval with TE buffer pH 9.0; (\*) Alternatively, antigen retrieval may be performed with citrate buffer pH 6.0**

## Background Information

Putative prostate cancer susceptibility protein (ELAC2) is encoded by HPC2/ELAC2 gene. HPC2 is a potential prostate cancer predisposition gene playing a role in genetic susceptibility to prostate cancer. It is a zinc phosphodiesterase, which displays some tRNA 3'-processing endonuclease activity and probably involved in tRNA maturation, by removing a 3'-trailer from precursor tRNA. Defects in ELAC2 may be a cause of susceptibility to prostate cancer (PC).

## Notable Publications

Author	Pubmed ID	Journal	Application
Mineri Rossana R	19492094	PLoS One	WB
Zbigniew Pietras	29967381	Nat Commun	WB
Brzezniak Lien K LK	21593607	RNA Biol	WB,IF

## Storage

**Storage:**

Store at -20°C. Stable for one year after shipment.

**Storage Buffer:**

PBS with 0.02% sodium azide and 50% glycerol pH 7.3.

Aliquoting is unnecessary for -20°C storage

For technical support and original validation data for this product please contact:

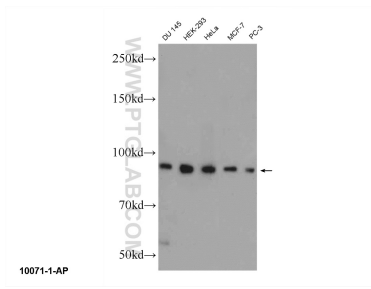
T: 4006900926

E: Proteintech-CN@ptglab.com

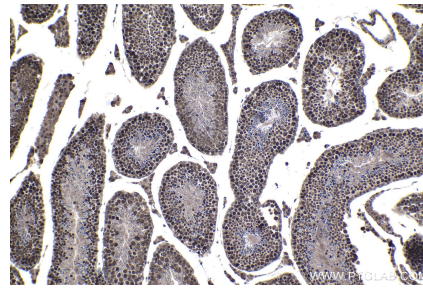
W: ptgcn.com

This product is exclusively available under Proteintech Group brand and is not available to purchase from any other manufacturer.

## Selected Validation Data



DU 145 cells were subjected to SDS PAGE followed by western blot with 10071-1-AP (ELAC2 Antibody) at dilution of 1:300 incubated at room temperature for 1.5 hours.



Immunohistochemical analysis of paraffin-embedded mouse testis tissue slide using 10071-1-AP (ELAC2 antibody) at dilution of 1:200 (under 10x lens). Heat mediated antigen retrieval with Tris-EDTA buffer (pH 9.0).