

For Research Use Only

Recoverin Polyclonal antibody

Catalog Number: 10073-1-AP **18 Publications**



Basic Information

Catalog Number: 10073-1-AP	GenBank Accession Number: BC001720	Purification Method: Antigen affinity purification
Size: 700 µg/ml	GeneID (NCBI): 5957	Recommended Dilutions: WB 1:500-1:1000 IF-P 1:50-1:500
Source: Rabbit	UNIPROT ID: P35243	
Isotype: IgG	Full Name: recoverin	
Immunogen Catalog Number: AG0119	Calculated MW: 24 kDa	
	Observed MW: 23 kDa	

Applications

Tested Applications: WB, IF-P, ELISA	Positive Controls: WB : mouse eye tissue, rat retina tissue, Y79 cells, rat eye tissue IF-P : mouse eye tissue, mouse brain tissue
Cited Applications: WB, IHC, IF	
Species Specificity: human, mouse, rat	
Cited Species: human, mouse, rat, zebrafish	

Background Information

Recoverin, belonging to a family of the neuronal calcium sensor (NCS) proteins, has a restricted expression in retinal photoreceptors or neurons or neuroendocrine cells. It has been suggested to play a role in light and dark adaptation by regulating rhodopsin phosphorylation. Recently, it has been found that autoantibodies against recoverin (24 kDa) have been strongly associated with cancer-associated retinopathy (CAR) syndrome, a paraneoplastic disease of the retina. But functions of recoverin in cancer cells remain unknown.

Notable Publications

Author	Pubmed ID	Journal	Application
Kenichi Makabe	32895435	Sci Rep	IF
Jie Zhang	34805789	iScience	WB
Keller Rachel L RL	16634935	Vet Ophthalmol	WB

Storage

Storage:
Store at -20°C. Stable for one year after shipment.
Storage Buffer:
PBS with 0.02% sodium azide and 50% glycerol pH 7.3.
Aliquoting is unnecessary for -20°C storage

For technical support and original validation data for this product please contact:

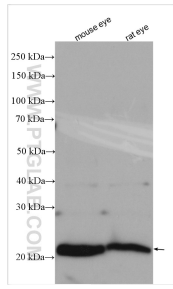
T: 4006900926

E: Proteintech-CN@ptglab.com

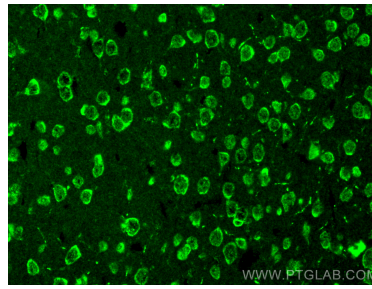
W: ptgcn.com

This product is exclusively available under Proteintech Group brand and is not available to purchase from any other manufacturer.

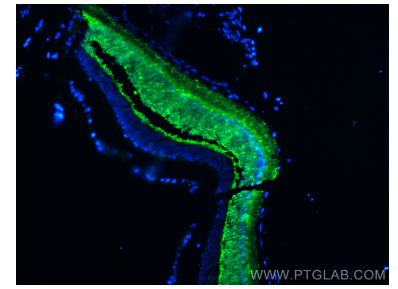
Selected Validation Data



Various lysates were subjected to SDS PAGE followed by western blot with 10073-1-AP (Recoverin antibody) at dilution of 1:800 incubated at room temperature for 1.5 hours.



Immunofluorescent analysis of (4% PFA) fixed paraffin-embedded mouse brain tissue using Recoverin antibody (10073-1-AP) at dilution of 1:200 and CoraLite®488-Conjugated Goat Anti-Rabbit IgG(H+L). Heat mediated antigen retrieval with Tris-EDTA buffer (pH 9.0).



Immunofluorescent analysis of (4% PFA) fixed paraffin-embedded mouse eye tissue using Recoverin antibody (10073-1-AP) at dilution of 1:200 and CoraLite®488-Conjugated Goat Anti-Rabbit IgG(H+L). Heat mediated antigen retrieval with Tris-EDTA buffer (pH 9.0).