

For Research Use Only

PKM Polyclonal antibody

Catalog Number:10078-2-AP

Featured Product

29 Publications



Basic Information

| | | |
|--|--|---|
| Catalog Number: 10078-2-AP | GenBank Accession Number: BC000481 | Purification Method: Antigen affinity purification |
| Concentration: 500 µg/ml | GeneID (NCBI): 5315 | Recommended Dilutions: WB 1:1000-1:4000 IHC 1:250-1:1000 IF/ICC 1:200-1:800 |
| Source: Rabbit | UNIPROT ID: P14618 | |
| Isotype: IgG | Full Name: PKM pyruvate kinase, muscle | |
| Immunogen Catalog Number: AG0110 | Calculated MW: 58 kDa Observed MW: 58 kDa | |

Applications

Tested Applications:
WB, IHC, IF/ICC, FC (Intra), ELISA

Cited Applications:
WB, IHC, IF, IP

Species Specificity:
human, mouse, rat

Cited Species:
human, mouse, rat, pig

Note-IHC: suggested antigen retrieval with TE buffer pH 9.0; (*) Alternatively, antigen retrieval may be performed with citrate buffer pH 6.0

Positive Controls:

WB: HeLa cells, multi-cells/tissue, Raji cells, SH-SY5Y cells, Jurkat cells, MCF-7 cells, SKOV-3 cells, NIH/3T3 cells, HepG2 cells, HEK-293 cells, rat skeletal muscle tissue, mouse brain tissue, mouse muscle tissue, mouse heart tissue

IHC: human colon cancer tissue,

IF/ICC: HeLa cells,

Background Information

PKM, also named as OIP3, PK2, PK3, PKM1/2, p58, THBP1, CTHBP and Tumor M2-PK, belongs to the pyruvate kinase family. It is glycolytic enzyme that catalyzes the transfer of a phosphoryl group from phosphoenolpyruvate (PEP) to ADP, generating ATP. It stimulates POU5F1-mediated transcriptional activation. PKM plays a general role in caspase independent cell death of tumor cells. PKM has 2 isoforms named as PKM1/M2. The activity of the M2 isoform can be inhibited by tyrosine kinase signalling in tumour cells. The primary pyruvate kinase isoform before tumour development is PKM1; however, the primary isoform from four independent tumours is PKM2.(PMID:18337823). This antibody can recognize both PKM1 and PKM2.

Notable Publications

| Author | Pubmed ID | Journal | Application |
|---------------|-----------|-------------------------------|-------------|
| Li-Jun Wen | 34956471 | Am J Transl Res | WB,IHC |
| Liangliang Fu | 28345649 | Sci Rep | WB |
| Yang Yang | 31211620 | Am J Physiol Endocrinol Metab | WB |

Storage

Storage:
Store at -20°C. Stable for one year after shipment.
Storage Buffer:
PBS with 0.02% sodium azide and 50% glycerol, pH7.3
Aliquoting is unnecessary for -20°C storage

For technical support and original validation data for this product please contact:

T: 4006900926

E: Proteintech-CN@ptglab.com

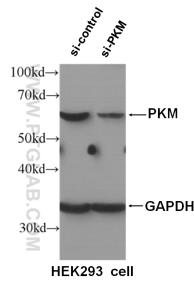
W: ptgcn.com

This product is exclusively available under Proteintech Group brand and is not available to purchase from any other manufacturer.

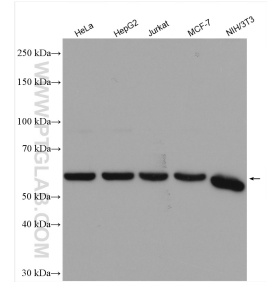
Selected Validation Data



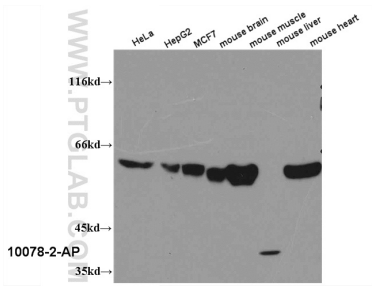
Immunohistochemical analysis of paraffin-embedded human colon cancer tissue slide using 10078-2-AP (PKM antibody) at dilution of 1:500 (under 10x lens). Heat mediated antigen retrieval with Tris-EDTA buffer (pH 9.0).



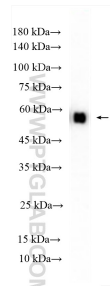
WB result of PKM antibody (10078-2-AP, 1:1000) with si-Control and si-PKM transfected HEK293 cells.



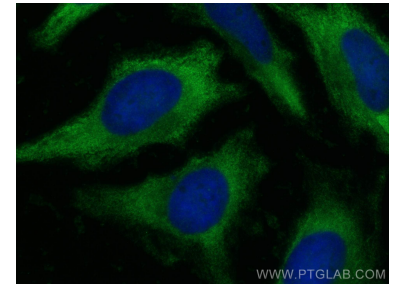
Various lysates were subjected to SDS PAGE followed by western blot with 10078-2-AP (PKM antibody) at dilution of 1:2000 incubated at room temperature for 1.5 hours.



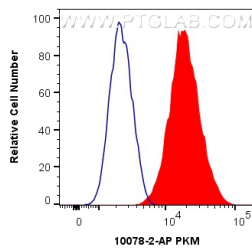
WB result of 10078-2-AP (PKM antibody) with various lysates.



rat skeletal muscle tissue were subjected to SDS PAGE followed by western blot with 10078-2-AP (PKM antibody) at dilution of 1:2000 incubated at room temperature for 1.5 hours.



Immunofluorescent analysis of (-20°C Ethanol) fixed HeLa cells using PKM antibody (10078-2-AP) at dilution of 1:400 and CoraLite®488-Conjugated Goat Anti-Rabbit IgG(H+L).



1X10⁶ HepG2 cells were intracellularly stained with 0.4 ug Anti-Human PKM (10078-2-AP) and CoraLite®488-Conjugated Goat Anti-Rabbit IgG(H+L) at dilution 1:1000 (red), or 0.4 ug Isotype Control. Cells were fixed with 4% PFA and permeabilized with Flow Cytometry Perm Buffer (PF00011-C).