

For Research Use Only

# PCTAIRE1 Polyclonal antibody

Catalog Number: 10102-1-AP

Featured Product

4 Publications



## Basic Information

**Catalog Number:**

10102-1-AP

**Size:**

750 µg/ml

**Source:**

Rabbit

**Isotype:**

IgG

**Immunogen Catalog Number:**

AG0151

**GenBank Accession Number:**

BC001048

**GeneID (NCBI):**

5127

**UNIPROT ID:**

Q00536

**Full Name:**

PCTAIRE protein kinase 1

**Calculated MW:**

56 kDa

**Observed MW:**

56-63 kDa

**Purification Method:**

Antigen affinity purification

**Recommended Dilutions:**

WB 1:500-1:1000

IP 0.5-4.0 µg for 1.0-3.0 mg of total protein lysate

IHC 1:50-1:500

## Applications

**Tested Applications:**

IHC, IP, WB, ELISA

**Cited Applications:**

WB, IHC

**Species Specificity:**

human, mouse

**Cited Species:**

human, mouse

**Note-IHC: suggested antigen retrieval with TE buffer pH 9.0; (\*) Alternatively, antigen retrieval may be performed with citrate buffer pH 6.0**

**Positive Controls:**

WB : mouse brain tissue,

IP : mouse brain tissue,

IHC : human pancreas tissue,

## Background Information

### Notable Publications

Author	Pubmed ID	Journal	Application
Qi Jia	34687270	Mol Oncol	WB
Hong-Fang Duan	25809707	Tumour Biol	WB
Jasbir Singh Dalal	34259631	Elife	WB

## Storage

**Storage:**

Store at -20°C. Stable for one year after shipment.

**Storage Buffer:**

PBS with 0.02% sodium azide and 50% glycerol pH 7.3.

Aliquoting is unnecessary for -20°C storage

For technical support and original validation data for this product please contact:

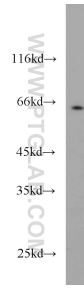
T: 4006900926

E: Proteintech-CN@ptglab.com

W: ptgcn.com

**This product is exclusively available under Proteintech Group brand and is not available to purchase from any other manufacturer.**

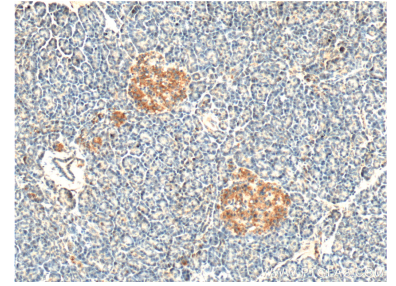
## Selected Validation Data



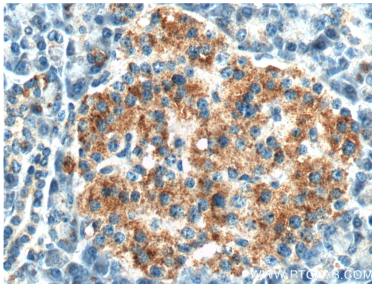
mouse brain tissue were subjected to SDS PAGE followed by western blot with 10102-1-AP (PCTAIRE1 antibody) at dilution of 1:600 incubated at room temperature for 1.5 hours.



IP result of anti-PCTAIRE1 (IP:10102-1-AP, 4ug; Detection:10102-1-AP 1:500) with mouse brain tissue lysate 4400ug.



Immunohistochemical analysis of paraffin-embedded human pancreas tissue slide using 10102-1-AP (PCTAIRE1 antibody at dilution of 1:200 (under 10x lens).



Immunohistochemical analysis of paraffin-embedded human pancreas tissue slide using 10102-1-AP (PCTAIRE1 antibody at dilution of 1:200 (under 40x lens).