

For Research Use Only

Cytokeratin 15 Polyclonal antibody

Catalog Number: 10137-1-AP **18 Publications**



Basic Information

| | | |
|--|--|--|
| Catalog Number: 10137-1-AP | GenBank Accession Number: BC002641 | Purification Method: Antigen affinity purification |
| Concentration: 750 µg/ml | GeneID (NCBI): 3866 | Recommended Dilutions: WB 1:2000-1:10000 |
| Source: Rabbit | UNIPROT ID: P19012 | IP 0.5-4.0 µg for 1.0-3.0 mg of total protein lysate |
| Isotype: IgG | Full Name: keratin 15 | IHC 1:400-1:1600 |
| Immunogen Catalog Number: AG0185 | Calculated MW: 49 kDa | IF/ICC 1:50-1:500 |
| | Observed MW: 49 kDa | |

Applications

Tested Applications:
WB, IHC, IF/ICC, IP, ELISA

Cited Applications:
WB, IHC, IF

Species Specificity:
human

Cited Species:
human, mouse, rat

Note-IHC: suggested antigen retrieval with **TE buffer pH 9.0; (*) Alternatively, antigen retrieval may be performed with citrate buffer pH 6.0**

Positive Controls:

WB: A431 cells, mouse thymus tissue, HeLa cells, PC-3 cells

IP: A431 cells,

IHC: human cervical cancer tissue, human oesophagus cancer tissue, human breast cancer tissue

IF/ICC: HeLa cells,

Background Information

Keratins are a large family of proteins that form the intermediate filament cytoskeleton of epithelial cells, which are classified into two major sequence types. Type I keratins are a group of acidic intermediate filament proteins, including K9-K23, and the hair keratins Ha1-Ha8. Type II keratins are the basic or neutral counterparts to the acidic type I keratins, including K1-K8, and the hair keratins, Hb1-Hb6. Keratin 15 is a type I cytokeratin. It is found in some progenitor basal cells within complex epithelia.

Notable Publications

| Author | Pubmed ID | Journal | Application |
|----------------|-----------|----------------------|-------------|
| Zhang W W | 18958303 | Mol Vis | IHC |
| Ximeng Kang | 36073016 | Biomater Sci | IHC |
| Shaoheng Xiong | 35685420 | Front Med (Lausanne) | WB,IF |

Storage

Storage:

Store at -20°C. Stable for one year after shipment.

Storage Buffer:

PBS with 0.02% sodium azide and 50% glycerol, pH7.3

Aliquoting is unnecessary for -20°C storage

For technical support and original validation data for this product please contact:

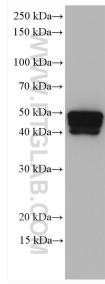
T: 4006900926

E: Proteintech-CN@ptglab.com

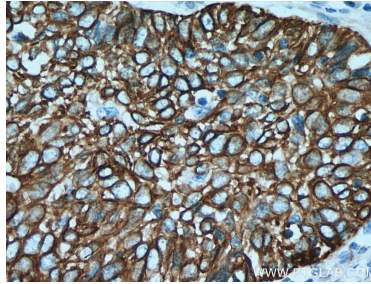
W: ptgcn.com

This product is exclusively available under Proteintech Group brand and is not available to purchase from any other manufacturer.

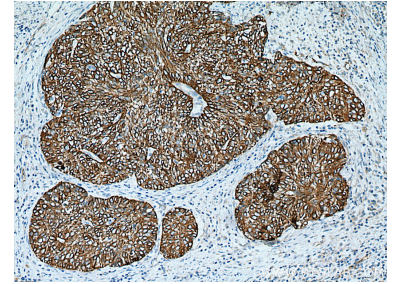
Selected Validation Data



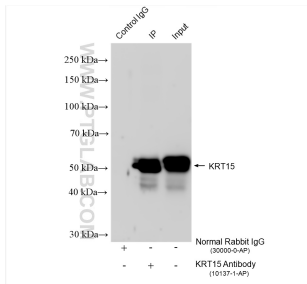
A431 cells were subjected to SDS PAGE followed by western blot with 10137-1-AP (Cytokeratin 15 antibody) at dilution of 1:5000 incubated at room temperature for 1.5 hours.



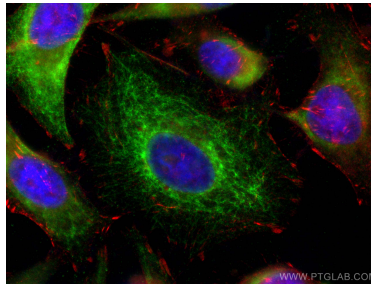
Immunohistochemical analysis of paraffin-embedded human cervical cancer tissue slide using 10137-1-AP (Cytokeratin 15 antibody) at dilution of 1:800 (under 40x lens). Heat mediated antigen retrieval with Tris-EDTA buffer (pH 9.0).



Immunohistochemical analysis of paraffin-embedded human cervical cancer tissue slide using 10137-1-AP (Cytokeratin 15 antibody) at dilution of 1:800 (under 10x lens). Heat mediated antigen retrieval with Tris-EDTA buffer (pH 9.0).



IP result of anti-Cytokeratin 15 (IP:10137-1-AP, 4ug; Detection:10137-1-AP 1:8000) with A431 cells lysate 1000 ug.



Immunofluorescent analysis of (-20°C Ethanol) fixed HeLa cells using Cytokeratin 15 antibody (10137-1-AP) at dilution of 1:200 and CoraLite® 488-Conjugated Goat Anti-Rabbit IgG(H+L) (SA00013-2), CL594-phalloidin (red).