

For Research Use Only

STAT1 Polyclonal antibody

Catalog Number: 10144-2-AP

Featured Product

177 Publications



Basic Information

Catalog Number:

10144-2-AP

Concentration:

800 ug/ml

Source:

Rabbit

Isotype:

IgG

Immunogen Catalog Number:

AG0199

GenBank Accession Number:

BC002704

GeneID (NCBI):

6772

UNIPROT ID:

P42224

Full Name:

signal transducer and activator of transcription 1, 91kDa

Calculated MW:

83 kDa

Observed MW:

83-87 kDa

Purification Method:

Antigen affinity purification

Recommended Dilutions:

WB 1:2000-1:10000

IP 0.5-4.0 ug for 1.0-3.0 mg of total protein lysate

IHC 1:200-1:800

IF/ICC 1:200-1:800

Applications

Tested Applications:

WB, IHC, IF/ICC, FC (Intra), IP, ELISA

Cited Applications:

WB, IHC, IF, IP, CoIP, ChIP

Species Specificity:

human

Cited Species:

human, mouse, rat, monkey, chicken

Note-IHC: suggested antigen retrieval with TE buffer pH 9.0; (*) Alternatively, antigen retrieval may be performed with citrate buffer pH 6.0

Positive Controls:

WB: A431 cells, HEK-293 cells, A549 cells, K-562 cells, PC-3 cells

IP: PC-3 cells,

IHC: human stomach tissue, human ovary cancer tissue, human testis tissue

IF/ICC: IFN alpha treated HeLa cells,

Background Information

STAT1 (signal transducers and activators of transcription 1) is a member of the STAT protein family. In response to cytokines and growth factors, STAT family members are phosphorylated by the receptor associated kinases, and then form homo- or heterodimers that translocate to the cell nucleus where they act as transcription activators. Various ligands, including interferons- and -, EGF, PDGF and IL-6, can activate STAT1. STAT1 protein mediates the expression of a variety of genes, which is thought to be important for cell viability in response to different cell stimuli and pathogens. This antibody is a rabbit polyclonal antibody raised against residues near the N terminus of human STAT1.

Notable Publications

Author	Pubmed ID	Journal	Application
Xin Wen	36249018	Front Oncol	WB
Lin Deng	36170649	J Med Chem	WB
Bin Zhang	32964498	Neurochem Res	WB,IHC

Storage

Storage:

Store at -20°C. Stable for one year after shipment.

Storage Buffer:

PBS with 0.02% sodium azide and 50% glycerol, pH7.3

Aliquoting is unnecessary for -20°C storage

For technical support and original validation data for this product please contact:

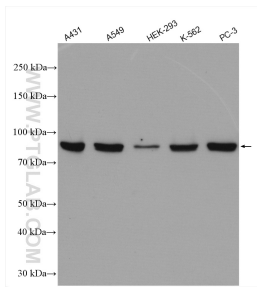
T: 4006900926

E: Proteintech-CN@ptglab.com

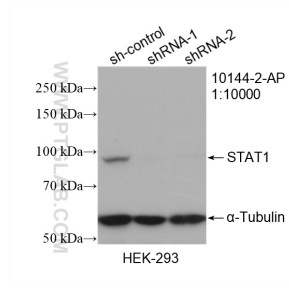
W: ptgcn.com

This product is exclusively available under Proteintech Group brand and is not available to purchase from any other manufacturer.

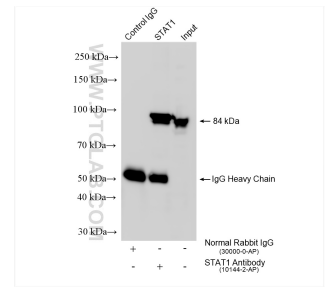
Selected Validation Data



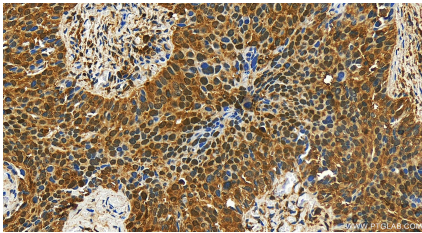
Various lysates were subjected to SDS PAGE followed by western blot with 10144-2-AP (STAT1 antibody) at dilution of 1:5000 incubated at room temperature for 1.5 hours.



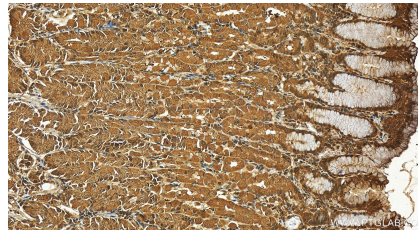
WB result of STAT1 antibody (10144-2-AP; 1:10000; incubated at room temperature for 1.5 hours) with sh-Control and sh-STAT1 transfected HEK-293 cells.



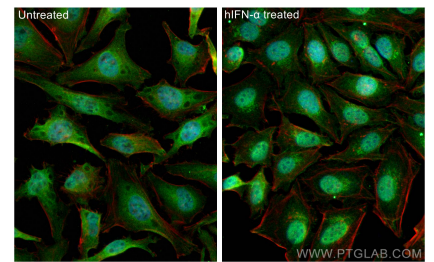
IP result of anti-STAT1 (IP:10144-2-AP, 4 μ g; Detection:10144-2-AP 1:5000) with PC-3 cells lysate 1575 μ g.



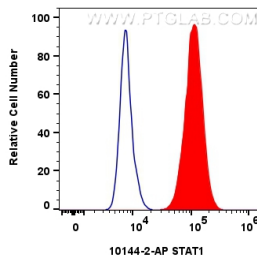
Immunohistochemical analysis of paraffin-embedded human ovary cancer tissue slide using 10144-2-AP (STAT1 antibody) at dilution of 1:400 (under 20x lens). Heat mediated antigen retrieval with Tris-EDTA buffer (pH 9.0).



Immunohistochemical analysis of paraffin-embedded human stomach tissue slide using 10144-2-AP (STAT1 antibody) at dilution of 1:400 (under 20x lens). Heat mediated antigen retrieval with Tris-EDTA buffer (pH 9.0).



Immunofluorescent analysis of (4% PFA) fixed IFN alpha treated HeLa cells using STAT1 antibody (10144-2-AP) at dilution of 1:400 and CoraLite@488-Conjugated AffiniPure Goat Anti-Rabbit IgG(H+L) (SA00013-2), CL594-phalloidin (red).



1x10⁶ MCF-7 cells were intracellularly stained with 0.4 μ g Anti-Human STAT1 (10144-2-AP)(red), or 0.4 μ g Rabbit IgG control Rabbit PolyAb (30000-0-AP) (blue). Cells were fixed with 4% PFA and permeabilized with Flow Cytometry Perm Buffer (PF00011-C).