

For Research Use Only

NSE Polyclonal antibody

Catalog Number: 10149-1-AP

Featured Product

5 Publications



Basic Information

Catalog Number:

10149-1-AP

Size:

400 µg/ml

Source:

Rabbit

Isotype:

IgG

Purification Method:

Antigen affinity purification

Immunogen Catalog Number:

AG0196

GenBank Accession Number:

BC002745

GeneID (NCBI):

2026

Full Name:

enolase 2 (gamma, neuronal)

Calculated MW:

47 kDa

Observed MW:

47 kDa

Recommended Dilutions:

WB 1:5000-1:10000

IP 0.5-4.0 µg for IP and 1:200-1:1000 for WB

IHC 1:100-1:400

Applications

Tested Applications:

IHC, IP, WB, ELISA

Cited Applications:

IF, IHC, WB

Species Specificity:

human, mouse, rat

Cited Species:

goat, human, rat

Note-IHC: suggested antigen retrieval with TE buffer pH 9.0; (*) Alternatively, antigen retrieval may be performed with citrate buffer pH 6.0

Positive Controls:

WB: human brain tissue; mouse brain tissue, U-251 cells

IP: mouse brain tissue;

IHC: human brain tissue; human lung tissue, human testis tissue

Background Information

NSE, also named as ENO2, belongs to the enolase family. Enolases are cytoplasmic glycolytic enzymes that may be involved in differentiation. The enolase has three isoenzymes, alpha, beta and gamma. The alpha form is expressed in most tissues, whereas the beta form is expressed in muscle tissue. The gamma enolase (ENO2), a homodimer, is primarily localized in neurons and neuroendocrine cells and is a cancer diagnostic marker for brain tumors (PMID:7520111). ENO2 plays a role in the glycolysis-related energy pathway and might be involved in higher metabolic activity during the day than at night, at least in part.

Notable Publications

Author	Pubmed ID	Journal	Application
Lawrence Owusu	29728894	J Mol Histol	IHC
Zhimin Wang	33487075	Cell Cycle	IF
Huiling Cao	32067986	Neurosci Lett	WB, IF

Storage

Storage:

Store at -20°C. Stable for one year after shipment.

Storage Buffer:

PBS with 0.02% sodium azide and 50% glycerol pH 7.3.

Aliquoting is unnecessary for -20°C storage

For technical support and original validation data for this product please contact:

T: 4006900926

E: Proteintech-CN@ptglab.com

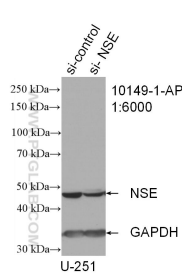
W: ptgcn.com

This product is exclusively available under Proteintech Group brand and is not available to purchase from any other manufacturer.

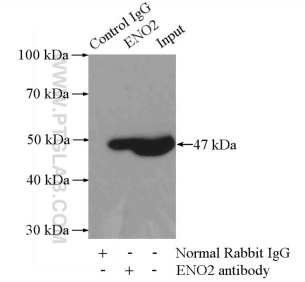
Selected Validation Data



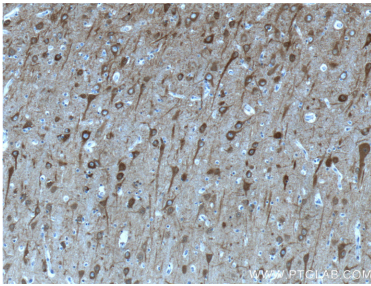
human brain tissue were subjected to SDS PAGE followed by western blot with 10149-1-AP (NSE antibody) at dilution of 1:400 incubated at room temperature for 1.5 hours.



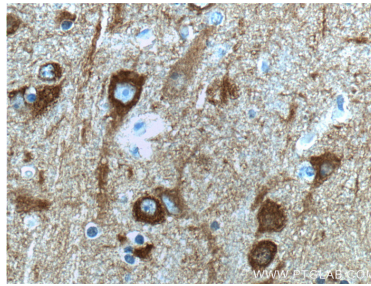
WB result of NSE antibody (10149-1-AP; 1:6000; incubated at room temperature for 1.5 hours) with sh-Control and sh-NSE transfected U-251 cells.



IP Result of anti-NSE (IP:10149-1-AP, 4ug; Detection:10149-1-AP 1:300) with mouse brain tissue lysate 4000ug.



Immunohistochemical analysis of paraffin-embedded human brain tissue slide using 10149-1-AP (NSE antibody at dilution of 1:200 (under 10x lens).



Immunohistochemical analysis of paraffin-embedded human brain tissue slide using 10149-1-AP (NSE antibody at dilution of 1:200 (under 40x lens).