

For Research Use Only

# IGFBP3 Polyclonal antibody

Catalog Number:10189-2-AP

Featured Product

35 Publications



## Basic Information

**Catalog Number:**

10189-2-AP

**Concentration:**

500 ug/ml

**Source:**

Rabbit

**Isotype:**

IgG

**Immunogen Catalog Number:**

AG0242

**GenBank Accession Number:**

BC000013

**GeneID (NCBI):**

3486

**UNIPROT ID:**

P17936

**Full Name:**

insulin-like growth factor binding protein 3

**Calculated MW:**

32 kDa

**Observed MW:**

32 kDa, 40-45 kDa

**Purification Method:**

Antigen affinity purification

**Recommended Dilutions:**

WB 1:1000-1:8000

IHC 1:20-1:200

IF/ICC 1:200-1:800

## Applications

**Tested Applications:**

WB, IHC, IF/ICC, ELISA

**Cited Applications:**

WB, IHC, IF

**Species Specificity:**

human, mouse

**Cited Species:**

human, mouse, rat, chicken

**Note-IHC: suggested antigen retrieval with TE buffer pH 9.0; (\*) Alternatively, antigen retrieval may be performed with citrate buffer pH 6.0**

**Positive Controls:**

WB : HeLa cells, MCF-7 cells, SKOV-3 cells

IHC : human breast cancer tissue, human colon cancer tissue

IF/ICC : HeLa cells,

## Background Information

Insulin-like growth factor binding protein-3 (IGFBP-3) contains a 27 amino acid putative signal sequence followed by a mature protein of 264 amino acids with 18 cysteine residues clustered near the N- and C-terminus. Accordingly, expression of the cloned IGFBP-3 cDNA in mammalian tissue culture cells results in secretion of the protein into the culture medium. IGFBP-3 shares high homology (33% amino acid identity) including conservation of all 18 cysteine residues with a smaller human IGF-binding protein (BP-28) identified in amniotic fluid. IGFBP-3 has one or more glycosylation sites with a protein core of 30 kDa. Western blots revealed that the 39-45 kDa IGFBP-3 fragment is a glycoprotein. (PMID: 23403918, PMID: 24926947, PMID: 19887447)

## Notable Publications

Author	Pubmed ID	Journal	Application
Yuan Yin	34562520	Cancer Lett	WB
Xuanrong Chen	35003355	J Cancer	WB
Yulin Guo	29075359	Clin Epigenetics	WB

## Storage

**Storage:**

Store at -20°C. Stable for one year after shipment.

**Storage Buffer:**

PBS with 0.02% sodium azide and 50% glycerol

Aliquoting is unnecessary for -20°C storage

For technical support and original validation data for this product please contact:

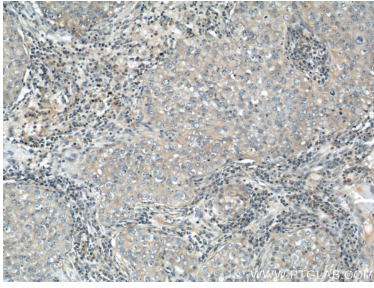
T: 4006900926

E: Proteintech-CN@ptglab.com

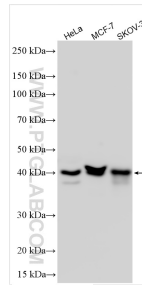
W: ptgcn.com

**This product is exclusively available under Proteintech Group brand and is not available to purchase from any other manufacturer.**

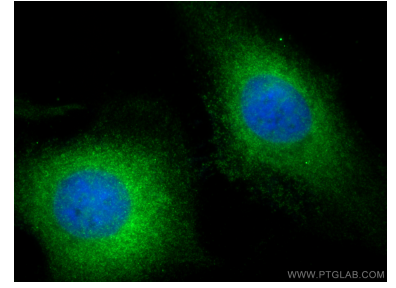
## Selected Validation Data



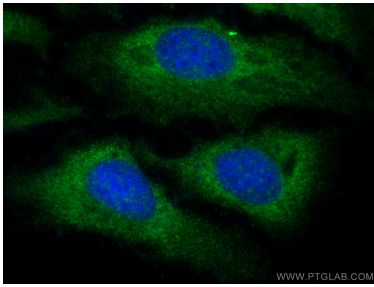
Immunohistochemical analysis of paraffin-embedded human breast cancer using 10189-2-AP (IGFBP3 antibody) at dilution of 1:50 (under 10x lens).



Various lysates were subjected to SDS PAGE followed by western blot with 10189-2-AP (IGFBP3 antibody) at dilution of 1:4000 incubated at room temperature for 1.5 hours.



Immunofluorescent analysis of (-20°C Ethanol) fixed HeLa cells using IGFBP3 antibody (10189-2-AP) at dilution of 1:400 and Multi-rAb CoraLite® Plus 488-Goat Anti-Rabbit Recombinant Secondary Antibody (H+L) (RGAR002).



Immunofluorescent analysis of (-20°C Ethanol) fixed HeLa cells using IGFBP3 antibody (10189-2-AP) at dilution of 1:400 and Multi-rAb CoraLite® Plus 488-Goat Anti-Rabbit Recombinant Secondary Antibody (H+L) (RGAR002).