

For Research Use Only

# RABEPK/p40 Polyclonal antibody

Catalog Number: 10213-2-AP



## Basic Information

<b>Catalog Number:</b> 10213-2-AP	<b>GenBank Accession Number:</b> BC000503	<b>Purification Method:</b> Antigen affinity purification
<b>Size:</b> 800 µg/ml	<b>GeneID (NCBI):</b> 10244	<b>Recommended Dilutions:</b> WB 1:500-1:1000 IHC 1:50-1:500
<b>Source:</b> Rabbit	<b>UNIPROT ID:</b> Q7Z6M1	
<b>Isotype:</b> IgG	<b>Full Name:</b> Rab9 effector protein with kelch motifs	
<b>Immunogen Catalog Number:</b> AG0285	<b>Calculated MW:</b> 40 kDa	
	<b>Observed MW:</b> 40 kDa	

## Applications

<b>Tested Applications:</b> IHC, WB, ELISA	<b>Positive Controls:</b> WB : HepG2 cells, K-562 cells, HeLa cells IHC : human lung cancer tissue,
<b>Species Specificity:</b> human	

**Note-IHC: suggested antigen retrieval with TE buffer pH 9.0; (\*) Alternatively, antigen retrieval may be performed with citrate buffer pH 6.0**

## Background Information

Rab9 GTPase is required for the transport of mannose 6-phosphate receptors from endosomes to the trans-Golgi network in living cells, and in an in vitro system that reconstitutes this process. P40 is an effector of Rab9 that interacts preferentially with the active form of Rab9. p40 does not interact with Rab7 or K-Ras; it also fails to bind Rab9 when it is bound to GDI. The protein is found in cytosol, yet a significant fraction (~30%) is associated with cellular membranes. P40 is a very potent transport factor in that the pure, recombinant protein can stimulate, significantly, an in vitro transport assay that measures transport of mannose 6-phosphate receptors from endosomes to the trans-Golgi network.

## Storage

**Storage:**  
Store at -20°C. Stable for one year after shipment.  
**Storage Buffer:**  
PBS with 0.02% sodium azide and 50% glycerol pH 7.3.  
Aliquoting is unnecessary for -20°C storage

For technical support and original validation data for this product please contact:

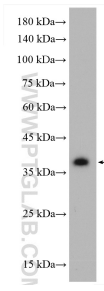
T: 4006900926

E: Proteintech-CN@ptglab.com

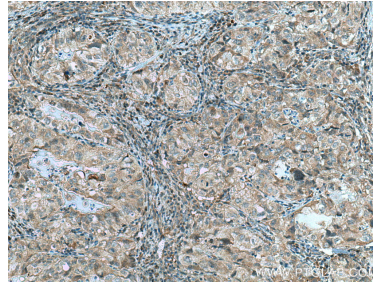
W: ptgcn.com

**This product is exclusively available under Proteintech Group brand and is not available to purchase from any other manufacturer.**

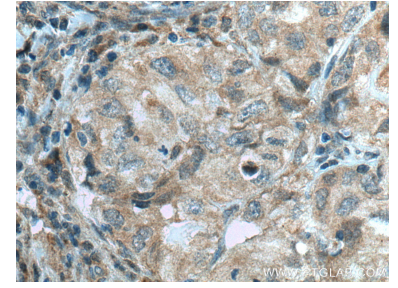
## Selected Validation Data



HepG2 cells were subjected to SDS PAGE followed by western blot with 10213-2-AP (RABEPK/p40 antibody) at dilution of 1:600 incubated at room temperature for 1.5 hours.



Immunohistochemical analysis of paraffin-embedded human lung cancer tissue slide using 10213-2-AP (RABEPK/p40 antibody) at dilution of 1:200 (under 10x lens). Heat mediated antigen retrieval with Tris-EDTA buffer (pH 9.0).



Immunohistochemical analysis of paraffin-embedded human lung cancer tissue slide using 10213-2-AP (RABEPK/p40 antibody) at dilution of 1:200 (under 40x lens). Heat mediated antigen retrieval with Tris-EDTA buffer (pH 9.0).