

For Research Use Only

CBX1 Polyclonal antibody

Catalog Number:10241-2-AP

Featured Product

10 Publications



Basic Information

Catalog Number:

10241-2-AP

Size:

650 ug/ml

Source:

Rabbit

Isotype:

IgG

Immunogen Catalog Number:

AG0328

GenBank Accession Number:

BC002609

GeneID (NCBI):

10951

UNIPROT ID:

P83916

Full Name:

chromobox homolog 1 (HP1 beta homolog Drosophila)

Calculated MW:

27 kDa

Observed MW:

27 kDa

Purification Method:

Antigen affinity purification

Recommended Dilutions:

WB 1:500-1:2000

IP 0.5-4.0 ug for 1.0-3.0 mg of total protein lysate

IHC 1:250-1:1000

IF/ICC 1:200-1:800

Applications

Tested Applications:

WB, IHC, IF/ICC, IP, ELISA

Cited Applications:

WB, IHC, IF, IP

Species Specificity:

human, mouse, rat

Cited Species:

human, mouse

Note-IHC: suggested antigen retrieval with TE buffer pH 9.0; (*) Alternatively, antigen retrieval may be performed with citrate buffer pH 6.0

Positive Controls:

WB: A431 cells, MCF-7 cells, HEK-293 cells, human brain tissue, NIH/3T3 cells

IP: HEK-293 cells,

IHC: human stomach cancer tissue, mouse testis tissue, human colon cancer tissue, human lung cancer tissue, human ovary tumor tissue

IF/ICC: HEK-293 cells,

Background Information

One function of heterochromatin is the epigenetic silencing by sequestration of genes into transcriptionally repressed nuclear neighborhoods. Heterochromatin protein 1 (HP1) is a major component of heterochromatin and is a candidate for establishing and mediating gene silencing. This protein is expressed in all adult and embryonic tissues, as a homodimer.

Notable Publications

| Author | Pubmed ID | Journal | Application |
|--------------|-----------|-----------------|-------------|
| Yin Zhao | 36310139 | Adv Sci (Weinh) | WB,IHC,IP |
| Zhangping He | 32161174 | J Virol | WB |
| Guang Yang | 28361889 | Nat Commun | WB |

Storage

Storage:

Store at -20°C. Stable for one year after shipment.

Storage Buffer:

PBS with 0.02% sodium azide and 50% glycerol pH 7.3.

Aliquoting is unnecessary for -20°C storage

For technical support and original validation data for this product please contact:

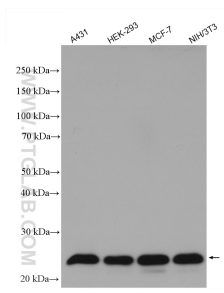
T: 4006900926

E: Proteintech-CN@ptglab.com

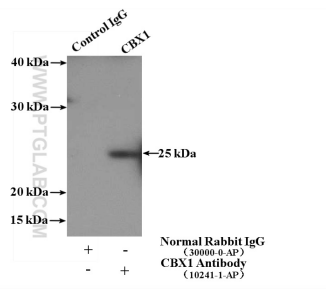
W: ptgcn.com

This product is exclusively available under Proteintech Group brand and is not available to purchase from any other manufacturer.

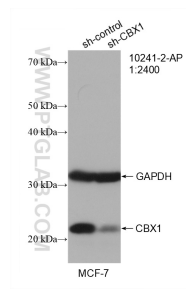
Selected Validation Data



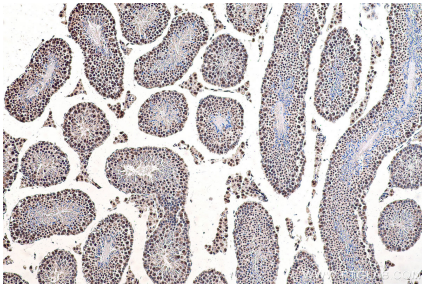
Various lysates were subjected to SDS PAGE followed by western blot with 10241-2-AP (CBX1 antibody) at dilution of 1:1000 incubated at room temperature for 1.5 hours.



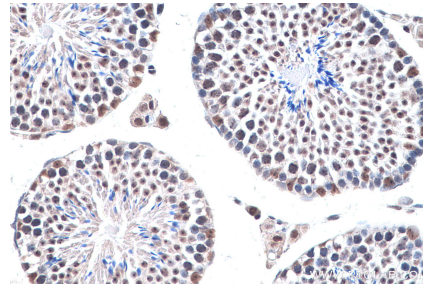
IP result of anti-CBX1 (IP:10241-2-AP, 3ug; Detection:10241-2-AP 1:500) with HEK-293 cells lysate 1480ug.



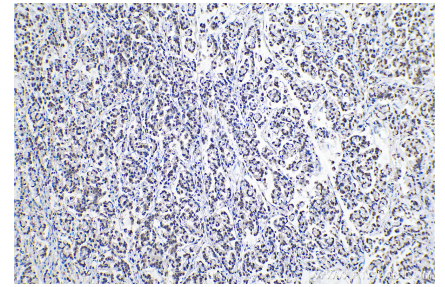
WB result of CBX1 antibody (10241-2-AP; 1:2400; incubated at room temperature for 1.5 hours) with sh-Control and sh-CBX1 transfected MCF-7 cells.



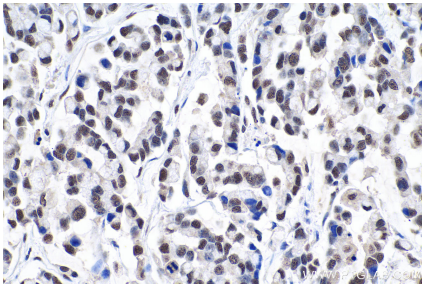
Immunohistochemical analysis of paraffin-embedded mouse testis tissue slide using 10241-2-AP (CBX1 antibody) at dilution of 1:500 (under 10x lens). Heat mediated antigen retrieval with Tris-EDTA buffer (pH 9.0).



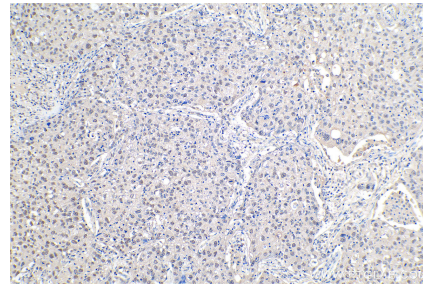
Immunohistochemical analysis of paraffin-embedded mouse testis tissue slide using 10241-2-AP (CBX1 antibody) at dilution of 1:1000 (under 40x lens). Heat mediated antigen retrieval with Tris-EDTA buffer (pH 9.0).



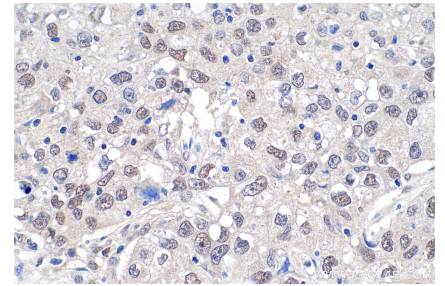
Immunohistochemical analysis of paraffin-embedded human colon cancer tissue slide using 10241-2-AP (CBX1 antibody) at dilution of 1:500 (under 10x lens). Heat mediated antigen retrieval with Tris-EDTA buffer (pH 9.0).



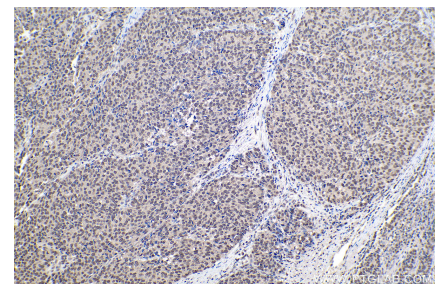
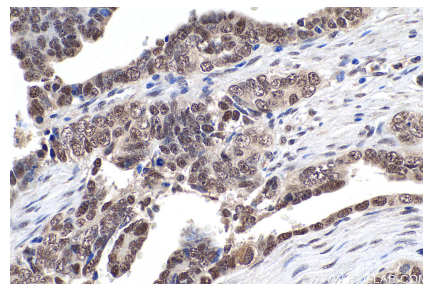
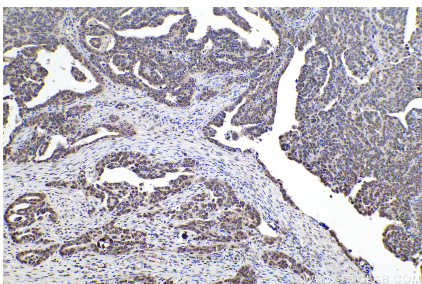
Immunohistochemical analysis of paraffin-embedded human colon cancer tissue slide using 10241-2-AP (CBX1 antibody) at dilution of 1:500 (under 40x lens). Heat mediated antigen retrieval with Tris-EDTA buffer (pH 9.0).



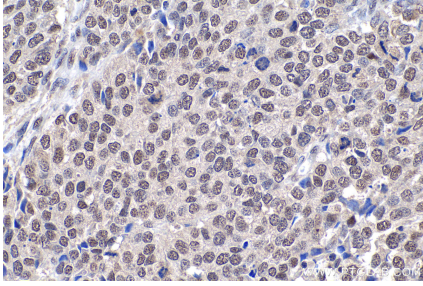
Immunohistochemical analysis of paraffin-embedded human lung cancer tissue slide using 10241-2-AP (CBX1 antibody) at dilution of 1:500 (under 10x lens). Heat mediated antigen retrieval with Tris-EDTA buffer (pH 9.0).



Immunohistochemical analysis of paraffin-embedded human lung cancer tissue slide using 10241-2-AP (CBX1 antibody) at dilution of 1:500 (under 40x lens). Heat mediated antigen retrieval with Tris-EDTA buffer (pH 9.0).

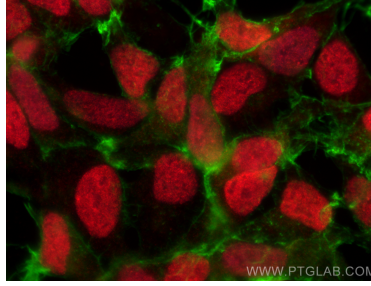


Immunohistochemical analysis of paraffin-embedded human ovary tumor tissue slide using 10241-2-AP (CBX1 antibody) at dilution of 1:500 (under 10x lens). Heat mediated antigen retrieval with Tris-EDTA buffer (pH 9.0).



Immunohistochemical analysis of paraffin-embedded human stomach cancer tissue slide using 10241-2-AP (CBX1 antibody) at dilution of 1:500 (under 40x lens). Heat mediated antigen retrieval with Tris-EDTA buffer (pH 9.0).

Immunohistochemical analysis of paraffin-embedded human ovary tumor tissue slide using 10241-2-AP (CBX1 antibody) at dilution of 1:500 (under 40x lens). Heat mediated antigen retrieval with Tris-EDTA buffer (pH 9.0).



Immunofluorescent analysis of (4% PFA) fixed HEK-293 cells using CBX1 antibody (10241-2-AP) at dilution of 1:400 and CoraLite® 594-Conjugated Goat Anti-Rabbit IgG(H+L) (SA00013-4), CL488-Phalloidin (green).