

For Research Use Only

# TIP30 Polyclonal antibody

Catalog Number: 10251-1-AP **1 Publications**



## Basic Information

<b>Catalog Number:</b> 10251-1-AP	<b>GenBank Accession Number:</b> BC002439	<b>Purification Method:</b> Antigen affinity purification
<b>Size:</b> 600 µg/ml	<b>GeneID (NCBI):</b> 10553	<b>Recommended Dilutions:</b> WB 1:500-1:1000 IHC 1:50-1:500
<b>Source:</b> Rabbit	<b>UNIPROT ID:</b> Q9BUP3	
<b>Isotype:</b> IgG	<b>Full Name:</b> HIV-1 Tat interactive protein 2, 30kDa	
<b>Immunogen Catalog Number:</b> AG0353	<b>Calculated MW:</b> 27 kDa	
	<b>Observed MW:</b> 30 kDa	

## Applications

<b>Tested Applications:</b> IHC, WB, ELISA	<b>Positive Controls:</b> WB : HeLa cells, SW 1990 cells IHC : human liver tissue, human liver cancer tissue
<b>Cited Applications:</b> WB	
<b>Species Specificity:</b> human	
<b>Cited Species:</b> mouse	
<b>Note-IHC: suggested antigen retrieval with TE buffer pH 9.0; (*) Alternatively, antigen retrieval may be performed with citrate buffer pH 6.0</b>	

## Background Information

### Notable Publications

Author	Pubmed ID	Journal	Application
Zi Lv	34917606	Front Cell Dev Biol	WB

## Storage

**Storage:**  
Store at -20°C. Stable for one year after shipment.  
**Storage Buffer:**  
PBS with 0.02% sodium azide and 50% glycerol pH 7.3.  
Aliquoting is unnecessary for -20°C storage

For technical support and original validation data for this product please contact:

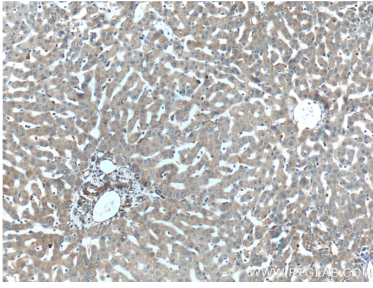
T: 4006900926

E: Proteintech-CN@ptglab.com

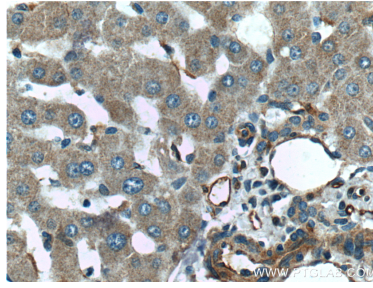
W: ptgcn.com

**This product is exclusively available under Proteintech Group brand and is not available to purchase from any other manufacturer.**

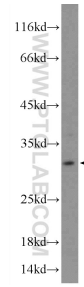
## Selected Validation Data



Immunohistochemical analysis of paraffin-embedded human liver tissue slide using 10251-1-AP (TIP30 Antibody) at dilution of 1:200 (under 10x lens).



Immunohistochemical analysis of paraffin-embedded human liver tissue slide using 10251-1-AP (TIP30 Antibody) at dilution of 1:200 (under 40x lens).



HeLa cells were subjected to SDS PAGE followed by western blot with 10251-1-AP (TIP30 Antibody) at dilution of 1:600 incubated at room temperature for 1.5 hours.