

For Research Use Only

STAT6 70kDa Polyclonal antibody

Catalog Number: 10257-1-AP **2 Publications**



Basic Information

Catalog Number:

10257-1-AP

Size:

370 µg/ml

Source:

Rabbit

Isotype:

IgG

Immunogen Catalog Number:

AG0410

GenBank Accession Number:

BC005823

GeneID (NCBI):

6778

UNIPROT ID:

P42226

Full Name:

signal transducer and activator of transcription 6, interleukin-4 induced

Calculated MW:

100 kDa

Observed MW:

75-80 kDa

Purification Method:

Antigen affinity purification

Recommended Dilutions:

WB 1:500-1:2000

IHC 1:20-1:200

Applications

Tested Applications:

IHC, WB, ELISA

Cited Applications:

WB

Species Specificity:

human, mouse, rat

Cited Species:

mouse, rat

Note-IHC: suggested antigen retrieval with TE buffer pH 9.0; (*) Alternatively, antigen retrieval may be performed with citrate buffer pH 6.0

Positive Controls:

WB : HeLa cells,

IHC : human spleen tissue,

Background Information

STAT6, also named as Signal transducer and activator of transcription 6, is a 847 amino acid protein, which belongs to the transcription factor STAT family. STAT6 forms a homodimer or a heterodimer with a related family member. STAT6 translocates into the nucleus in response to phosphorylation. STAT6 is Involved in IL4/interleukin-4- and IL3/interleukin-3-mediated signaling. This poly-antibody only recognizes 70 kDa isoform of STAT6.

Notable Publications

Author	Pubmed ID	Journal	Application
Ying Xu	34425061	Pharm Biol	WB
Yiwei Zhang	34456714	Front Pharmacol	WB

Storage

Storage:

Store at -20°C. Stable for one year after shipment.

Storage Buffer:

PBS with 0.02% sodium azide and 50% glycerol pH 7.3.

Aliquoting is unnecessary for -20°C storage

For technical support and original validation data for this product please contact:

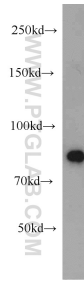
T: 4006900926

E: Proteintech-CN@ptglab.com

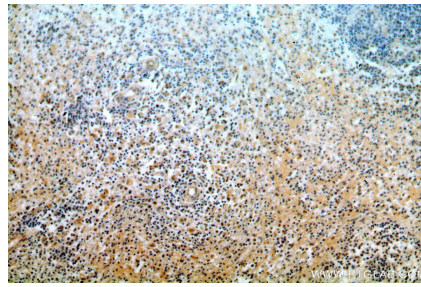
W: ptgcn.com

This product is exclusively available under Proteintech Group brand and is not available to purchase from any other manufacturer.

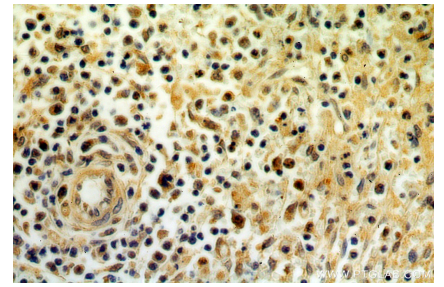
Selected Validation Data



HeLa cells were subjected to SDS PAGE followed by western blot with 10257-1-AP (STAT6 antibody) at dilution of 1:1000 incubated at room temperature for 1.5 hours.



Immunohistochemical analysis of paraffin-embedded human spleen using 10257-1-AP (STAT6 antibody) at dilution of 1:50 (under 10x lens).



Immunohistochemical analysis of paraffin-embedded human spleen using 10257-1-AP (STAT6 antibody) at dilution of 1:50 (under 40x lens).