

For Research Use Only

NXF1 Polyclonal antibody

Catalog Number:10328-1-AP

Featured Product

11 Publications



Basic Information

Catalog Number:

10328-1-AP

Concentration:

500 µg/ml

Source:

Rabbit

Isotype:

IgG

Immunogen Catalog Number:

AG0413

GenBank Accession Number:

BC004904

GeneID (NCBI):

10482

UNIPROT ID:

Q9UBU9

Full Name:

nuclear RNA export factor 1

Calculated MW:

70 kDa

Observed MW:

66-70 kDa

Purification Method:

Antigen affinity purification

Recommended Dilutions:

WB 1:500-1:1000

IP 0.5-4.0 µg for 1.0-3.0 mg of total protein lysate

IF/ICC 1:20-1:200

Applications

Tested Applications:

WB, IF/ICC, IP, ELISA

Cited Applications:

WB, IF, IP, CoIP

Species Specificity:

human

Cited Species:

human, mouse, monkey

Positive Controls:

WB : HeLa cells, HEK-293T cells, K-562 cells, HepG2 cells

IP : HeLa cells,

IF/ICC : HepG2 cells,

Background Information

Nuclear RNA export factor 1 (NXF1, synonyms: TAP, MEX67) is one member of a family of nuclear RNA export factors. Common domain features of this family are a noncanonical RNP-type RNA-binding domain (RBD), 4 leucine-rich repeats (LRRs), a nuclear transport factor 2 (NTF2)-like domain that allows heterodimerization with NTF2-related export protein-1(NXT1), and a ubiquitin-associated domain that mediates interactions with nucleoporins. The LRRs and NTF2-like domains are required for export activity. This protein shuttles between the nucleus and the cytoplasm and binds in vivo to poly(A)⁺ RNA. It is the vertebrate homologue of the yeast protein Mex67p. NXF1 overcomes the mRNA export block caused by the presence of saturating amounts of CTE (constitutive transport element) RNA of type D retroviruses. There are some phosphorylation modification sites center on the N-terminal of NXF1.

Notable Publications

Author	Pubmed ID	Journal	Application
Ke Wang	30194269	J Cell Biol	
Miao Chen	34793452	PLoS Genet	WB
Norihiro Okada	34082065	Gene	WB

Storage

Storage:

Store at -20°C. Stable for one year after shipment.

Storage Buffer:

PBS with 0.02% sodium azide and 50% glycerol, pH7.3

Aliquoting is unnecessary for -20°C storage

For technical support and original validation data for this product please contact:

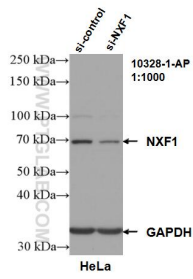
T: 4006900926

E: Proteintech-CN@ptglab.com

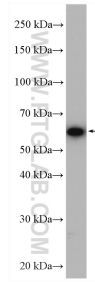
W: ptgcn.com

This product is exclusively available under Proteintech Group brand and is not available to purchase from any other manufacturer.

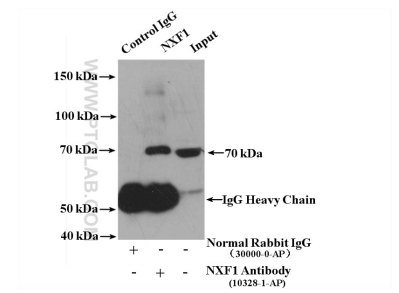
Selected Validation Data



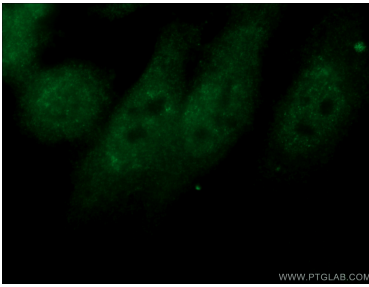
WB result of NXF1 antibody (10328-1-AP; 1:1000; incubated at room temperature for 1.5 hours) with sh-Control and sh-NXF1 transfected HeLa cells.



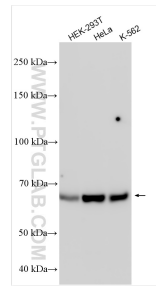
HeLa cells were subjected to SDS PAGE followed by western blot with 10328-1-AP (NXF1 antibody) at dilution of 1:600 incubated at room temperature for 1.5 hours.



IP result of anti-NXF1 (IP:10328-1-AP, 4ug; Detection:10328-1-AP 1:500) with HeLa cells lysate 3000 ug.



Immunofluorescent analysis of HepG2 cells using 10328-1-AP (NXF1 antibody) at dilution of 1:50 and Alexa Fluor 488-conjugated Goat Anti-Rabbit IgG(H+L).



Various lysates were subjected to SDS PAGE followed by western blot with 10328-1-AP (NXF1 antibody) at dilution of 1:1000 incubated at room temperature for 1.5 hours.