

For Research Use Only

# CEA/CD66e Polyclonal antibody

Catalog Number: 10421-1-AP

Featured Product

8 Publications



## Basic Information

**Catalog Number:**

10421-1-AP

**Size:**

650 ug/ml

**Source:**

Rabbit

**Isotype:**

IgG

**Immunogen Catalog Number:**

AG0672

**GenBank Accession Number:**

BC034671

**GeneID (NCBI):**

1048

**UNIPROT ID:**

P06731

**Full Name:**

carcinoembryonic antigen-related cell adhesion molecule 5

**Calculated MW:**

77 kDa

**Observed MW:**

180-200 kDa, 77 kDa

**Purification Method:**

Antigen affinity purification

**Recommended Dilutions:**

WB 1:500-1:2000

IHC 1:200-1:800

IF-P 1:50-1:500

## Applications

**Tested Applications:**

WB, IHC, IF-P, ELISA

**Cited Applications:**

WB, IHC, chIP

**Species Specificity:**

human

**Cited Species:**

human, mouse

**Note-IHC: suggested antigen retrieval with TE buffer pH 9.0; (\*) Alternatively, antigen retrieval may be performed with citrate buffer pH 6.0**

**Positive Controls:**

**WB:** HT-29 cells, MCF-7 cells, human saliva

**IHC:** human colon cancer tissue, human appendicitis tissue, human stomach cancer tissue, human lung cancer tissue

**IF-P:** human colon cancer tissue,

## Background Information

Carcinoembryonic antigen (CEA), also known as CEACAM5 or CD66e, is a cell surface glycoprotein belonging to the immunoglobulin superfamily, mainly serving as a cell adhesion molecule mediating intercellular contact by both homophilic and heterophilic binding (PMID: 21731662). CEA inhibits anoikis and plays a role in tumorigenesis and metastasis. CEA has been found to be overexpressed in a wide variety of human cancers, including colon, breast, and lung (PMID: 17167768). CEA is a tumor marker and is routinely exploited for diagnosis.

## Notable Publications

| Author        | Pubmed ID | Journal    | Application |
|---------------|-----------|------------|-------------|
| Jorge Lascano | 36084115  | PLoS One   | WB          |
| Ina Rudloff   | 31734267  | Transl Res | WB          |
| P-H Zhou      | 26005859  | Gene Ther  | IHC         |

## Storage

**Storage:**

Store at -20°C. Stable for one year after shipment.

**Storage Buffer:**

PBS with 0.02% sodium azide and 50% glycerol pH 7.3.

Aliquoting is unnecessary for -20°C storage

For technical support and original validation data for this product please contact:

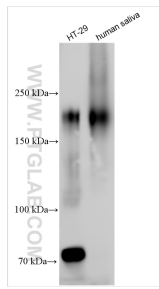
T: 4006900926

E: Proteintech-CN@ptglab.com

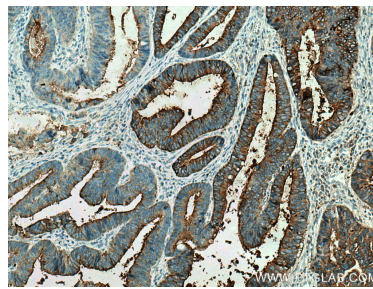
W: ptgcn.com

**This product is exclusively available under Proteintech Group brand and is not available to purchase from any other manufacturer.**

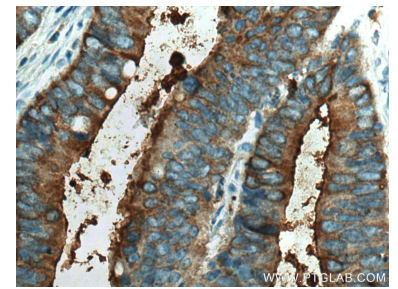
## Selected Validation Data



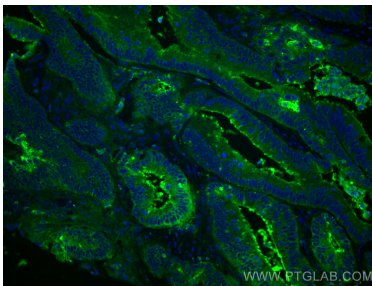
Various lysates were subjected to SDS PAGE followed by western blot with 10421-1-AP (CEA antibody) at dilution of 1:1000 incubated at room temperature for 1.5 hours.



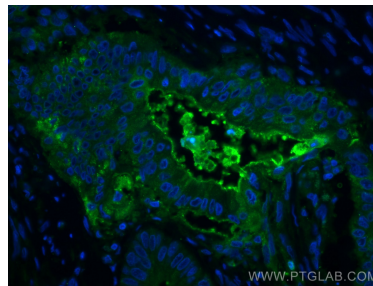
Immunohistochemical analysis of paraffin-embedded human colon cancer tissue slide using 10421-1-AP (CEA antibody) at dilution of 1:400 (under 10x lens). Heat mediated antigen retrieval with Tris-EDTA buffer (pH 9.0).



Immunohistochemical analysis of paraffin-embedded human colon cancer tissue slide using 10421-1-AP (CEA antibody) at dilution of 1:400 (under 40x lens). Heat mediated antigen retrieval with Tris-EDTA buffer (pH 9.0).



Immunofluorescent analysis of (4% PFA) fixed human colon cancer tissue using CEA antibody (10421-1-AP) at dilution of 1:200 and CoraLite®488-Conjugated AffiniPure Goat Anti-Rabbit IgG(H+L).



Immunofluorescent analysis of (4% PFA) fixed human colon cancer tissue using CEA antibody (10421-1-AP) at dilution of 1:200 and CoraLite®488-Conjugated AffiniPure Goat Anti-Rabbit IgG(H+L).