

For Research Use Only

UBE2B Polyclonal antibody

Catalog Number: 10733-1-AP

Featured Product

4 Publications



Basic Information

Catalog Number:

10733-1-AP

Size:

260 µg/ml

Source:

Rabbit

Isotype:

IgG

Immunogen Catalog Number:

AG1147

GenBank Accession Number:

BC005979

GeneID (NCBI):

7320

UNIPROT ID:

P63146

Full Name:

ubiquitin-conjugating enzyme E2B
(RAD6 homolog)

Calculated MW:

17 kDa

Observed MW:

17 kDa

Purification Method:

Antigen affinity purification

Recommended Dilutions:

WB 1:500-1:1000

IHC 1:50-1:500

Applications

Tested Applications:

IHC, WB, ELISA

Cited Applications:

WB, IF, IHC

Species Specificity:

human, mouse, rat

Cited Species:

human, mouse

Note-IHC: suggested antigen retrieval with TE buffer pH 9.0; (*) Alternatively, antigen retrieval may be performed with citrate buffer pH 6.0

Positive Controls:

WB: LO2 cells, Transfected HEK-293 cells

IHC: human ovary tumor tissue,

Background Information

UBE2B (Ubiquitin-conjugating enzyme E2 B) is also named as RAD6B and belongs to the ubiquitin-conjugating enzyme family. Rad6B is an E2-conjugating enzyme, reported to mediate beta-catenin polyubiquitination and stabilization, thus activating the Wnt signaling pathway (PMID:21118991). The gene encodes a 152 amino acid protein. The Rad6B and Cdc34 proteins are significantly elevated in meiotic and postmeiotic haploid germ cells when chromatin modifications occur (PMID:10373550).

Notable Publications

Author	Pubmed ID	Journal	Application
Xi Zeng	35313791	Bioengineered	WB, IHC, IF
Mou Lisha L	23863405	Biol Reprod	WB, IF
Yu-Chi Li	27431683	Int J Mol Med	

Storage

Storage:

Store at -20°C. Stable for one year after shipment.

Storage Buffer:

PBS with 0.02% sodium azide and 50% glycerol pH 7.3.

Aliquoting is unnecessary for -20°C storage

For technical support and original validation data for this product please contact:

T: 4006900926

E: Proteintech-CN@ptglab.com

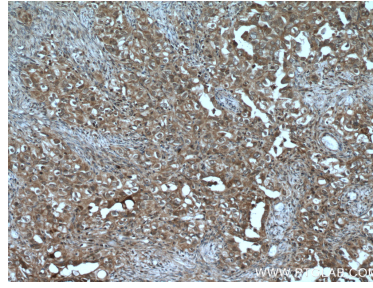
W: ptgcn.com

This product is exclusively available under Proteintech Group brand and is not available to purchase from any other manufacturer.

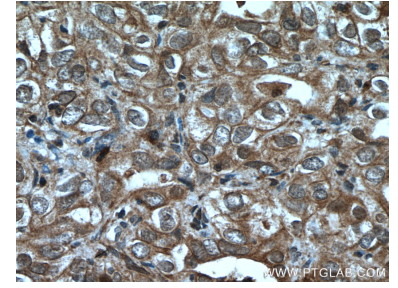
Selected Validation Data



L02 cells were subjected to SDS PAGE followed by western blot with 10733-1-AP (UBE2B Antibody) at dilution of 1:600 incubated at room temperature for 1.5 hours.



Immunohistochemical analysis of paraffin-embedded human ovary tumor tissue slide using 10733-1-AP (UBE2B antibody) at dilution of 1:200 (under 10x lens. Heat mediated antigen retrieval with Tris-EDTA buffer (pH 9.0).



Immunohistochemical analysis of paraffin-embedded human ovary tumor tissue slide using 10733-1-AP (UBE2B antibody) at dilution of 1:200 (under 40x lens. Heat mediated antigen retrieval with Tris-EDTA buffer (pH 9.0).