

For Research Use Only

TIM23 Polyclonal antibody

Catalog Number: 11123-1-AP

Featured Product

142 Publications



Basic Information

Catalog Number:

11123-1-AP

Concentration:

550 ug/ml

Source:

Rabbit

Isotype:

IgG

Immunogen Catalog Number:

AG1620

GenBank Accession Number:

BC062707

GeneID (NCBI):

100287932

UNIPROT ID:

O14925

Full Name:

translocase of inner mitochondrial membrane 23

Calculated MW:

22 kDa

Observed MW:

22 kDa

Purification Method:

Antigen affinity purification

Recommended Dilutions:

WB 1:1000-1:10000

IP 0.5-4.0 ug for 1.0-3.0 mg of total protein lysate

IHC 1:50-1:500

IF/ICC 1:200-1:800

Applications

Tested Applications:

WB, IHC, IF/ICC, IP, ELISA

Cited Applications:

WB, IHC, IF, IP

Species Specificity:

human, mouse, rat

Cited Species:

human, mouse, rat, pig, rabbit, canine, monkey, bovine, hamster, megalobrama amblycephala

Note-IHC: suggested antigen retrieval with TE buffer pH 9.0; (*) Alternatively, antigen retrieval may be performed with citrate buffer pH 6.0

Positive Controls:

WB: HepG2 cells, Jurkat cells, MCF-7 cells, mouse heart tissue, rat heart tissue

IP: mouse heart tissue,

IHC: human testis tissue,

IF/ICC: HepG2 cells,

Background Information

TIM23 is a mitochondrial inner membrane protein essential for import of preproteins into the matrix. Tim23 together with Tim17 and Tim44 form the Tim23 complex which mediates the import of nuclear encoded preproteins into the mitochondria. Tim23 is commonly used as loading control for mitochondrial inner membrane protein.

Notable Publications

Author	Pubmed ID	Journal	Application
Yinghua Zhao	36238596	Front Microbiol	WB
Yan Li	30208760	Autophagy	WB
Jonas Benjamin Michaelis	36056001	Nat Commun	WB

Storage

Storage:

Store at -20°C. Stable for one year after shipment.

Storage Buffer:

PBS with 0.02% sodium azide and 50% glycerol, pH7.3

Aliquoting is unnecessary for -20°C storage

For technical support and original validation data for this product please contact:

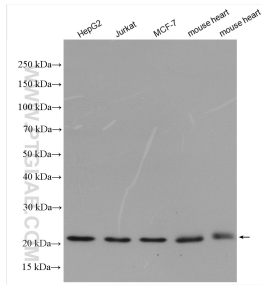
T: 4006900926

E: Proteintech-CN@ptglab.com

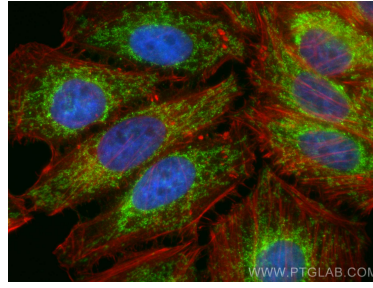
W: ptgcn.com

This product is exclusively available under Proteintech Group brand and is not available to purchase from any other manufacturer.

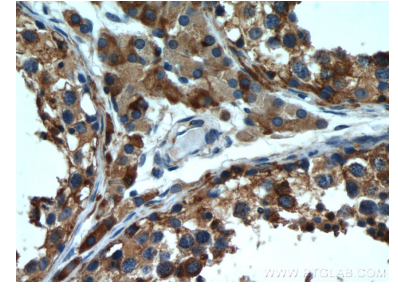
Selected Validation Data



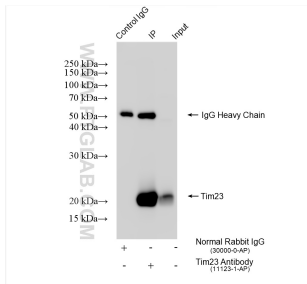
Various lysates were subjected to SDS PAGE followed by western blot with 11123-1-AP (Tim23 antibody) at dilution of 1:3000 incubated at room temperature for 1.5 hours.



Immunofluorescent analysis of (4% PFA) fixed HepG2 cells using TIM23 antibody (11123-1-AP) at dilution of 1:400 and CoraLite®488-Conjugated AffiniPure Goat Anti-Rabbit IgG(H+L), CL594-Phalloidin (red).



Immunohistochemical analysis of paraffin-embedded human testis using 11123-1-AP (TIM23 antibody) at dilution of 1:50 (under 40x lens).



IP result of anti-Tim23 (IP:11123-1-AP, 4ug; Detection:11123-1-AP 1:1000) with mouse heart tissue lysate 1200 ug.