

For Research Use Only

TOM20 Polyclonal antibody

Catalog Number: 11802-1-AP

Featured Product

645 Publications



Basic Information

Catalog Number:

11802-1-AP

Concentration:

600 ug/ml

Source:

Rabbit

Isotype:

IgG

Immunogen Catalog Number:

AG2378

GenBank Accession Number:

BC000882

GeneID (NCBI):

9804

UNIPROT ID:

Q15388

Full Name:

translocase of outer mitochondrial membrane 20 homolog (yeast)

Calculated MW:

145 aa, 16 kDa

Observed MW:

16 kDa

Purification Method:

Antigen affinity purification

Recommended Dilutions:

WB 1:5000-1:50000

IP 0.5-4.0 ug for 1.0-3.0 mg of total protein lysate

IHC 1:500-1:2000

IF/ICC 1:50-1:500

Applications

Tested Applications:

WB, IHC, IF/ICC, IP, ELISA

Cited Applications:

WB, IHC, IF, IP, CoIP

Species Specificity:

human, mouse, rat, chicken

Cited Species:

human, mouse, canine, monkey, chicken, bovine, hamster, caenorhabditis elegans, cattle, duck

Note-IHC: suggested antigen retrieval with TE buffer pH 9.0; (*) Alternatively, antigen retrieval may be performed with citrate buffer pH 6.0

Positive Controls:

WB: HEK-293 cells, HeLa cells, HepG2 cells, mouse kidney tissue, rat kidney tissue, SH-SY5Y cells

IP: HeLa cells,

IHC: mouse liver tissue, mouse brain tissue

IF/ICC: HUVEC cells, HepG2 cells

Background Information

TOM20, also named as KIAA0016, belongs to the Tom20 family. It is a central component of the receptor complex responsible for the recognition and translocation of cytosolically synthesized mitochondrial preproteins. Together with TOM22, TOM20 functions as the transit peptide receptor at the surface of the mitochondrion outer membrane and facilitates the movement of preproteins into the TOM40 translocation pore. TOM20 is characterized as major docking receptors to mediate the recognition by different mechanisms.

Notable Publications

Author	Pubmed ID	Journal	Application
Hiroki Takahashi	36175407	Nat Commun	WB
Katherine Labbé	34586346	J Cell Biol	WB,IF
Wei Cai	36170234	Autophagy	IF

Storage

Storage:

Store at -20°C. Stable for one year after shipment.

Storage Buffer:

PBS with 0.02% sodium azide and 50% glycerol, pH7.3

Aliquoting is unnecessary for -20°C storage

For technical support and original validation data for this product please contact:

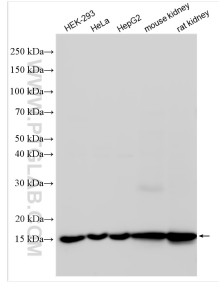
T: 4006900926

E: Proteintech-CN@ptglab.com

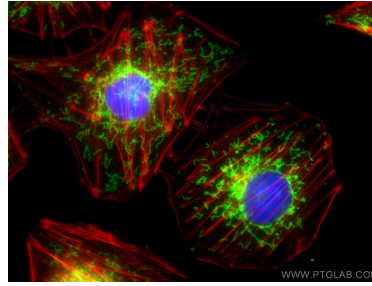
W: ptgcn.com

This product is exclusively available under Proteintech Group brand and is not available to purchase from any other manufacturer.

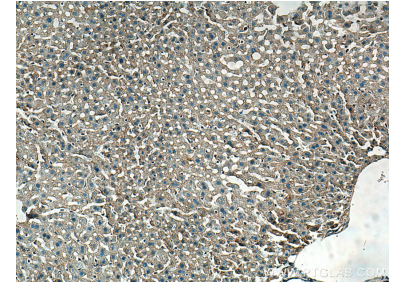
Selected Validation Data



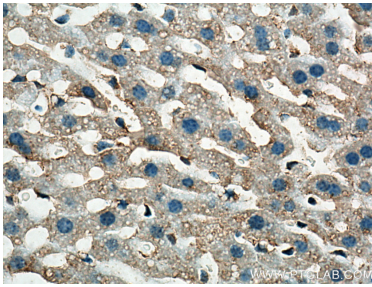
Various lysates were subjected to SDS PAGE followed by western blot with 11802-1-AP (TOM20 antibody) at dilution of 1:10000 incubated at room temperature for 1.5 hours.



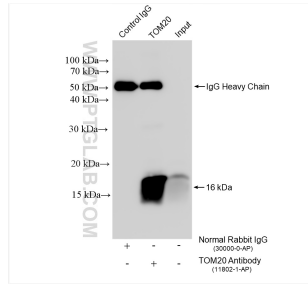
Immunofluorescent analysis of (4% PFA) fixed HUVEC cells using TOM20 antibody (11802-1-AP) at dilution of 1:200 and CoraLite® 488-Conjugated AffiniPure Goat Anti-Rabbit IgG(H+L), CL594-Phalloidin (red).



Immunohistochemical analysis of paraffin-embedded mouse liver tissue slide using 11802-1-AP (TOM20 antibody) at dilution of 1:1000 (under 10x lens). Heat mediated antigen retrieval with Tris-EDTA buffer (pH 9.0).



Immunohistochemical analysis of paraffin-embedded mouse liver tissue slide using 11802-1-AP (TOM20 antibody) at dilution of 1:1000 (under 40x lens). Heat mediated antigen retrieval with Tris-EDTA buffer (pH 9.0).



IP result of anti-TOM20 (IP:11802-1-AP, 4ug; Detection:11802-1-AP 1:6000) with HeLa cells lysate 1085 ug.