

For Research Use Only

AARE Polyclonal antibody

Catalog Number: 14758-1-AP **1 Publications**



Basic Information

Catalog Number: 14758-1-AP	GenBank Accession Number: BC000362	Purification Method: Antigen affinity purification
Size: 450 µg/ml	GeneID (NCBI): 327	Recommended Dilutions: WB 1:1000-1:4000 IHC 1:20-1:200 IF/ICC 1:200-1:800
Source: Rabbit	UNIPROT ID: P13798	
Isotype: IgG	Full Name: N-acylaminoacyl-peptide hydrolase	
Immunogen Catalog Number: AG6511	Calculated MW: 81 kDa Observed MW: 66-80 kDa	

Applications

Tested Applications: WB, IHC, IF/ICC, ELISA	Positive Controls: WB : COLO 320 cells, HeLa cells, human plasma tissue IHC : human liver tissue, IF/ICC : HepG2 cells,
Cited Applications: WB	
Species Specificity: human	
Note-IHC: suggested antigen retrieval with TE buffer pH 9.0; (*) Alternatively, antigen retrieval may be performed with citrate buffer pH 6.0	

Background Information

APH, (APEH, acylpeptide hydrolase), which catalyzes the hydrolysis of the terminal acetylated amino acid preferentially from small acetylated peptides. The acylpeptide hydrolase is a homotetrameric protein of 300 kDa with each subunit consisting of 732 amino acid residues. A range of molecular masses have been reported for APH by previous investigators, including 80 kD, 75 kD and 69 kD. This antibody can recognize at least 2 isoforms of APH.

Notable Publications

Author	Pubmed ID	Journal	Application
Rubayet Elahi	31068431	mSphere	WB

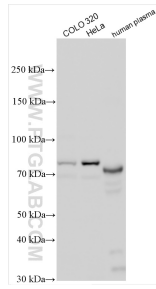
Storage

Storage:
Store at -20°C. Stable for one year after shipment.
Storage Buffer:
PBS with 0.02% sodium azide and 50% glycerol pH 7.3.
Aliquoting is unnecessary for -20°C storage

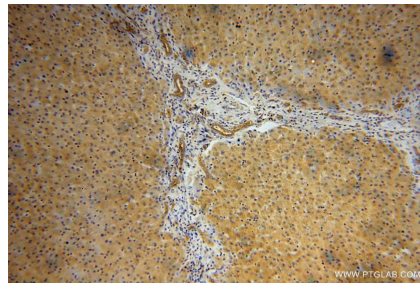
For technical support and original validation data for this product please contact:
T: 4006900926 E: Proteintech-CN@ptglab.com W: ptgcn.com

This product is exclusively available under Proteintech Group brand and is not available to purchase from any other manufacturer.

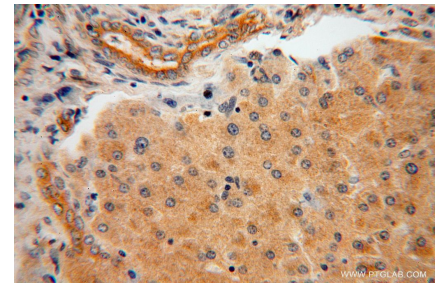
Selected Validation Data



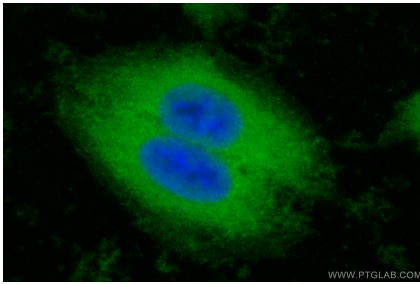
Various lysates were subjected to SDS PAGE followed by western blot with 14758-1-AP (AARE antibody) at dilution of 1:2000 incubated at room temperature for 1.5 hours.



Immunohistochemical analysis of paraffin-embedded human liver using 14758-1-AP (AARE antibody) at dilution of 1:100 (under 10x lens).



Immunohistochemical analysis of paraffin-embedded human liver using 14758-1-AP (AARE antibody) at dilution of 1:100 (under 40x lens).



Immunofluorescent analysis of (-20°C Ethanol) fixed HepG2 cells using AARE antibody (14758-1-AP) at dilution of 1:400 and CoraLite®488-Conjugated AffiniPure Goat Anti-Rabbit IgG(H+L) (SA00013-2).