

For Research Use Only

# GOT1 Polyclonal antibody

Catalog Number: 14886-1-AP

Featured Product

39 Publications



## Basic Information

**Catalog Number:**

14886-1-AP

**Size:**

600 µg/ml

**Source:**

Rabbit

**Isotype:**

IgG

**Immunogen Catalog Number:**

AG6671

**GenBank Accession Number:**

BC000498

**GeneID (NCBI):**

2805

**UNIPROT ID:**

P17174

**Full Name:**

glutamic-oxaloacetic transaminase 1, soluble (aspartate aminotransferase 1)

**Calculated MW:**

46 kDa

**Observed MW:**

43-46 kDa

**Purification Method:**

Antigen affinity purification

**Recommended Dilutions:**

WB 1:500-1:2000

IP 0.5-4.0 µg for 1.0-3.0 mg of total protein lysate

IF/ICC 1:50-1:500

## Applications

**Tested Applications:**

WB, IF/ICC, IP, ELISA

**Cited Applications:**

WB, IF, IP

**Species Specificity:**

human, mouse, rat

**Cited Species:**

human, mouse, rat, pig

**Positive Controls:**

WB : HepG2 cells, L02 cells, mouse brain, rat brain

IP : mouse brain tissue,

IF/ICC : L02 cells,

## Background Information

Glutamate oxaloacetate transaminase 1 (GOT1) catalyzes the reversible reaction of L-aspartate and alpha-ketoglutarate into oxaloacetate and L-glutamate and plays a key role in carbon and nitrogen metabolism. GOT1 can potentially control the intracellular levels of reactive oxygen species (ROS) through NADPH synthesis and enhances tumor growth. GOT1 expression correlates with the growth of several tumors.

## Notable Publications

Author	Pubmed ID	Journal	Application
Florinda Meléndez-Rodríguez	30811976	Cell Rep	WB
Liping Yu	36272463	Biochim Biophys Acta Bioenerg	WB
Weiwei Dai	36256480	J Clin Invest	WB

## Storage

**Storage:**

Store at -20°C. Stable for one year after shipment.

**Storage Buffer:**

PBS with 0.02% sodium azide and 50% glycerol pH 7.3.

Aliquoting is unnecessary for -20°C storage

For technical support and original validation data for this product please contact:

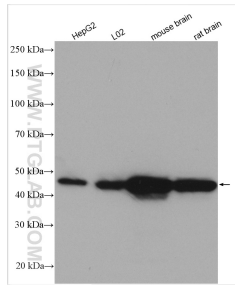
T: 4006900926

E: [Proteintech-CN@ptglab.com](mailto:Proteintech-CN@ptglab.com)

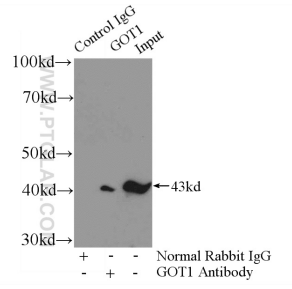
W: [ptgcn.com](http://ptgcn.com)

This product is exclusively available under Proteintech Group brand and is not available to purchase from any other manufacturer.

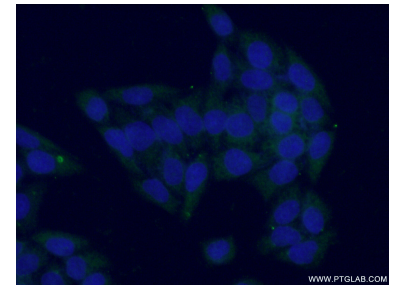
## Selected Validation Data



Various lysates were subjected to SDS PAGE followed by western blot with 14886-1-AP (GOT1 antibody) at dilution of 1:1000 incubated at room temperature for 1.5 hours.



IP result of anti-GOT1 (IP:14886-1-AP, 4 $\mu$ g; Detection:14886-1-AP 1:1000) with mouse brain tissue lysate 4000 $\mu$ g.



Immunofluorescent analysis of (-20 $^{\circ}$ C Ethanol) fixed L02 cells using 14886-1-AP (GOT1 antibody) at dilution of 1:50 and Alexa Fluor 488-conjugated Goat Anti-Rabbit IgG(H+L).