

For Research Use Only

CCR2b-specific Polyclonal antibody

Catalog Number: 16154-1-AP **3 Publications**



Basic Information

Catalog Number: 16154-1-AP	GenBank Accession Number: NM_000648	Purification Method: Antigen affinity purification
Concentration: 260 ug/ml	GeneID (NCBI): 729230	Recommended Dilutions: IHC 1:50-1:500
Source: Rabbit	UNIPROT ID: P41597	
Isotype: IgG	Full Name: chemokine (C-C motif) receptor 2	
	Calculated MW: 41 kDa	

Applications

Tested Applications: IHC, ELISA	Positive Controls: IHC : human liver cancer tissue, mouse spleen tissue
Cited Applications: WB, IHC, IF	
Species Specificity: human, mouse	
Cited Species: human	
Note-IHC: suggested antigen retrieval with TE buffer pH 9.0; (*) Alternatively, antigen retrieval may be performed with citrate buffer pH 6.0	

Background Information

CCR2 encodes a receptor for MCP1, functioning in inflammatory processes, tumor infiltration, and monocyte invasion of artery walls in atherosclerosis. There are two isoforms of CCR2, CCR2A and CCR2B. CCR2 isoforms were expressed by different cell subsets in both normal and IIM muscle. CCR2A was expressed in vessel walls and by some mononuclear cells, especially in cells involved in partial invasion in PM and IBM. CCR2B expression was observed in all satellite cells, in the muscular domain of neuromuscular junctions, and in some regenerative fibers of IIM, but not in inflammatory exudates. The sequences of the two isoforms are different from 314-374 aa. This antibody 16154-1-AP is raised against the peptide of 344-360 amino acids of CCR2b. It is specific to CCR2b.

Notable Publications

Author	Pubmed ID	Journal	Application
Natalia V Ortiz Zacarias	39201670	Int J Mol Sci	IF
Anna B Montgomery	37204925	Cell Rep	IF
Tianyue Zhai	36810973	Cancer Med	WB,IHC

Storage

Storage:
Store at -20°C. Stable for one year after shipment.
Storage Buffer:
PBS with 0.02% sodium azide and 50% glycerol
Aliquoting is unnecessary for -20°C storage

For technical support and original validation data for this product please contact:

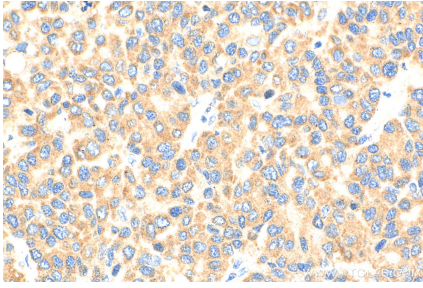
T: 4006900926

E: Proteintech-CN@ptglab.com

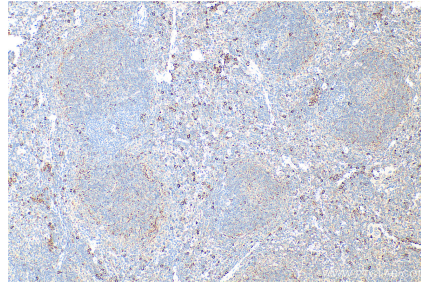
W: ptgcn.com

This product is exclusively available under Proteintech Group brand and is not available to purchase from any other manufacturer.

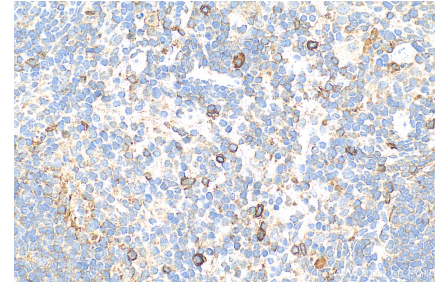
Selected Validation Data



Immunohistochemical analysis of paraffin-embedded human liver cancer tissue slide using 16154-1-AP (CCR2b-specific antibody) at dilution of 1:200 (under 40x lens). Heat mediated antigen retrieval with Tris-EDTA buffer (pH 9.0).



Immunohistochemical analysis of paraffin-embedded mouse spleen tissue slide using 16154-1-AP (CCR2b-specific antibody) at dilution of 1:200 (under 10x lens). Heat mediated antigen retrieval with Tris-EDTA buffer (pH 9.0).



Immunohistochemical analysis of paraffin-embedded mouse spleen tissue slide using 16154-1-AP (CCR2b-specific antibody) at dilution of 1:200 (under 40x lens). Heat mediated antigen retrieval with Tris-EDTA buffer (pH 9.0).