

For Research Use Only

# Cytokeratin 10-specific Polyclonal antibody

Catalog Number: 16855-1-AP



## Basic Information

<b>Catalog Number:</b> 16855-1-AP	<b>GenBank Accession Number:</b> NM_000421	<b>Purification Method:</b> Antigen affinity purification
<b>Concentration:</b> 550 ug/ml	<b>GeneID (NCBI):</b> 3858	<b>Recommended Dilutions:</b> WB 1:500-1:3000
<b>Source:</b> Rabbit	<b>UNIPROT ID:</b> P13645	IHC 1:500-1:2000
<b>Isotype:</b> IgG	<b>Full Name:</b> keratin 10	IF/ICC 1:50-1:500
	<b>Calculated MW:</b> 59 kDa	
	<b>Observed MW:</b> 59 kDa	

## Applications

**Tested Applications:**  
WB, IHC, IF/ICC, ELISA

**Species Specificity:**  
human, mouse, rat

**Note-IHC: suggested antigen retrieval with TE buffer pH 9.0; (\*) Alternatively, antigen retrieval may be performed with citrate buffer pH 6.0**

**Positive Controls:**

**WB:** mouse skin tissue, rat skin tissue

**IHC:** human skin cancer tissue, human breast cancer tissue, mouse skin tissue, rat skin tissue

**IF/ICC:** HaCaT cells,

## Background Information

Keratins are a large family of proteins that form the intermediate filament cytoskeleton of epithelial cells, which are classified into two major sequence types. Type I keratins are a group of acidic intermediate filament proteins, including K9-K23, and the hair keratins Ha1-Ha8. Type II keratins are the basic or neutral counterparts to the acidic type I keratins, including K1-K8, and the hair keratins, Hb1-Hb6. As a type I keratin, keratin 10 is a suprabasal marker of differentiation in stratified squamous epithelia. This antibody is specifically against KRT10.

## Storage

**Storage:**

Store at -20°C. Stable for one year after shipment.

**Storage Buffer:**

PBS with 0.02% sodium azide and 50% glycerol pH 7.3.

Aliquoting is unnecessary for -20°C storage

For technical support and original validation data for this product please contact:

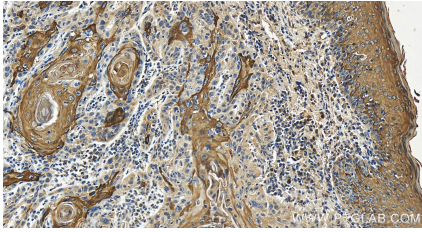
T: 4006900926

E: [Proteintech-CN@ptglab.com](mailto:Proteintech-CN@ptglab.com)

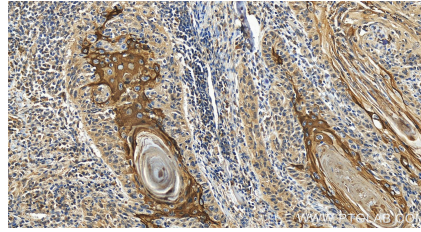
W: [ptgcn.com](http://ptgcn.com)

**This product is exclusively available under Proteintech Group brand and is not available to purchase from any other manufacturer.**

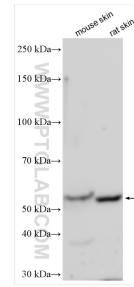
## Selected Validation Data



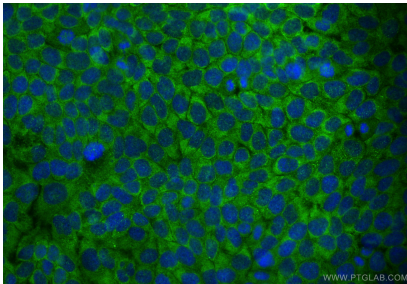
Immunohistochemical analysis of paraffin-embedded human skin cancer tissue slide using 16855-1-AP (Cytokeratin 10-specific antibody) at dilution of 1:1000 (under 20x lens). Heat mediated antigen retrieval with Tris-EDTA buffer (pH 9.0).



Immunohistochemical analysis of paraffin-embedded human skin cancer tissue slide using 16855-1-AP (Cytokeratin 10-specific antibody) at dilution of 1:1000 (under 20x lens). Heat mediated antigen retrieval with Tris-EDTA buffer (pH 9.0).



Various lysates were subjected to SDS PAGE followed by western blot with 16855-1-AP (Cytokeratin 10-specific antibody) at dilution of 1:1500 incubated at room temperature for 1.5 hours.



Immunofluorescent analysis of (-20°C Methanol) fixed HaCaT cells using Cytokeratin 10-specific antibody (16855-1-AP) at dilution of 1:200 and CoraLite®488-Conjugated Goat Anti-Rabbit IgG(H+L) (SA00013-2).