

For Research Use Only

# FASTKD2 Polyclonal antibody

Catalog Number:17464-1-AP

Featured Product

21 Publications



## Basic Information

**Catalog Number:**

17464-1-AP

**Size:**

500 ug/ml

**Source:**

Rabbit

**Isotype:**

IgG

**Immunogen Catalog Number:**

AG11314

**GenBank Accession Number:**

BC001544

**GeneID (NCBI):**

22868

**UNIPROT ID:**

Q9NYY8

**Full Name:**

FAST kinase domains 2

**Calculated MW:**

710 aa, 81 kDa

**Observed MW:**

55-65 kDa

**Purification Method:**

Antigen affinity purification

**Recommended Dilutions:**

WB 1:500-1:2000

IP 0.5-4.0 ug for 1.0-3.0 mg of total protein lysate

IF/ICC 1:20-1:200

## Applications

**Tested Applications:**

WB, IF/ICC, IP, ELISA

**Cited Applications:**

WB, IHC, IF, RIP

**Species Specificity:**

human, mouse, rat

**Cited Species:**

human, mouse, zebrafish

**Positive Controls:**

WB : HeLa cells, HepG2 cells, K-562 cells

IP : HepG2 cells,

IF/ICC : COS7 cells, U2OS cells

## Background Information

FASTKD2 encodes a FAS-activated serine-threonine (FAST) kinase domain 2 which locates in the mitochondrial inner compartment. FASTKD2 is a member of the human FASTK protein family, formed by six architecturally related proteins named FASTK and FASTKD1-5 that localize to mitochondria. The predicted MW of FASTKD2 is 81 kDa, yet the western blot of FASTKD2 revealed a band of ~60 kDa. (PMID: 26370583, PMID: 26990993, PMID: 25683715)

## Notable Publications

Author	Pubmed ID	Journal	Application
Timo Rey	32989247	Nat Cell Biol	IF, WB
Jason D Arroyo	27667664	Cell Metab	WB
Christopher Lowden	34525369	Cell Rep	WB

## Storage

**Storage:**

Store at -20°C. Stable for one year after shipment.

**Storage Buffer:**

PBS with 0.02% sodium azide and 50% glycerol pH 7.3.

Aliquoting is unnecessary for -20°C storage

For technical support and original validation data for this product please contact:

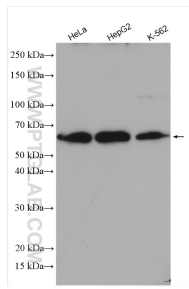
T: 4006900926

E: [Proteintech-CN@ptglab.com](mailto:Proteintech-CN@ptglab.com)

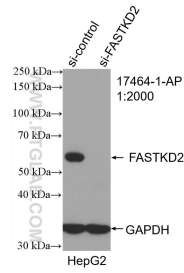
W: [ptgcn.com](http://ptgcn.com)

**This product is exclusively available under Proteintech Group brand and is not available to purchase from any other manufacturer.**

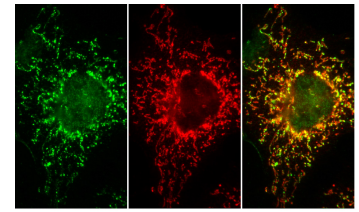
## Selected Validation Data



Various lysates were subjected to SDS PAGE followed by western blot with 17464-1-AP (FASTKD2 antibody) at dilution of 1:1000 incubated at room temperature for 1.5 hours.

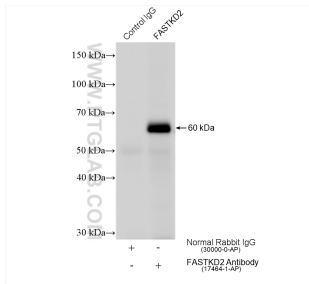


WB result of FASTKD2 antibody (17464-1-AP; 1:2000; incubated at room temperature for 1.5 hours) with sh-Control and sh-FASTKD2 transfected HepG2 cells.

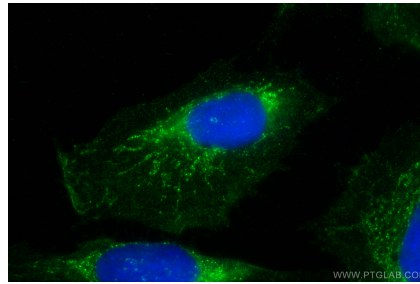


Endogenous protein in COS7 cells detected with 17464-1-AP FAST KD2 and counterstained with human anti-mitochondrial antibody (immunovision). Cells were fixed with paraformaldehyde and permeabilized with -20 methanol; similar results were obtained using detergent permeabilization following paraformaldehyde fixation.

IF result of anti-FASTKD2 (17464-1-AP) with COS7 cells.



IP result of anti-FASTKD2 (IP:17464-1-AP, 4ug; Detection:17464-1-AP 1:1000) with HepG2 cells lysate 2040 ug.



Immunofluorescent analysis of (4% PFA) fixed U2OS cells using FASTKD2 antibody (17464-1-AP) at dilution of 1:200 and Coralite®488-Conjugated AffiniPure Goat Anti-Rabbit IgG(H+L).