

For Research Use Only

Cytokeratin 7-specific Polyclonal antibody

Catalog Number: 17513-1-AP

Featured Product

52 Publications



Basic Information

Catalog Number:

17513-1-AP

Concentration:

550 ug/ml

Source:

Rabbit

Isotype:

IgG

GenBank Accession Number:

NM_005556

GeneID (NCBI):

3855

UNIPROT ID:

P08729

Full Name:

keratin 7

Calculated MW:

51 kDa

Observed MW:

51 kDa

Purification Method:

Antigen affinity purification

Recommended Dilutions:

WB 1:10000-1:50000

IP 0.5-4.0 ug for 1.0-3.0 mg of total protein lysate

IHC 1:1000-1:4000

IF-P 1:200-1:800

IF/ICC 1:50-1:500

Applications

Tested Applications:

WB, IHC, IF/ICC, IF-P, FC (Intra), IP, ELISA

Cited Applications:

WB, IHC, IF

Species Specificity:

human, mouse, rat

Cited Species:

human, mouse, rat, bovine

Note-IHC: suggested antigen retrieval with TE buffer pH 9.0; (*) Alternatively, antigen retrieval may be performed with citrate buffer pH 6.0

Positive Controls:

WB: A431 cells, HeLa cells, T-47D cells, mouse bladder tissue, mouse lung tissue, rat bladder tissue, rat lung tissue

IP: HepG2 cells,

IHC: human lung cancer tissue, human bowen disease, human breast cancer tissue, human cervical cancer tissue, human kidney tissue, human ovary tumor tissue

IF-P: mouse liver tissue,

IF/ICC: HeLa cells, HepG2 cells

Background Information

Keratins are a large family of proteins that form the intermediate filament cytoskeleton of epithelial cells, which are classified into two major sequence types. Type I keratins are a group of acidic intermediate filament proteins, including K9-K23, and the hair keratins Ha1-Ha8. Type II keratins are the basic or neutral counterparts to the acidic type I keratins, including K1-K8, and the hair keratins, Hb1-Hb6. KRT7 is a type II keratin. It is specifically expressed in the simple epithelia lining the cavities of the internal organs and in the gland ducts and blood vessels. This antibody is specifically against KRT7.

Notable Publications

Author	Pubmed ID	Journal	Application
Minghao Yan	31677783	Biochem Biophys Res Commun	IF
Xiaojing Liu	31675488	Placenta	IHC
Wen Xu	33060633	Sci Rep	IHC,WB,IF

Storage

Storage:

Store at -20°C. Stable for one year after shipment.

Storage Buffer:

PBS with 0.02% sodium azide and 50% glycerol pH 7.3.

Aliquoting is unnecessary for -20°C storage

For technical support and original validation data for this product please contact:

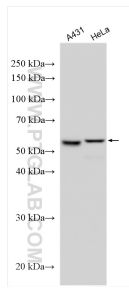
T: 4006900926

E: Proteintech-CN@ptglab.com

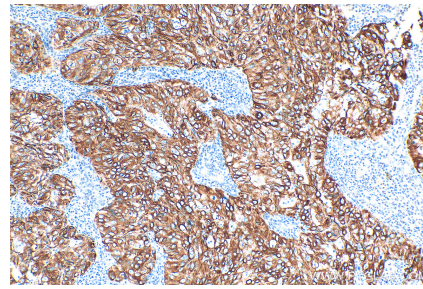
W: ptgcn.com

This product is exclusively available under Proteintech Group brand and is not available to purchase from any other manufacturer.

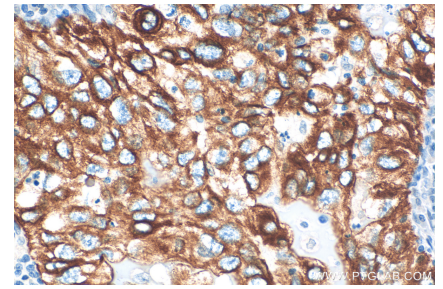
Selected Validation Data



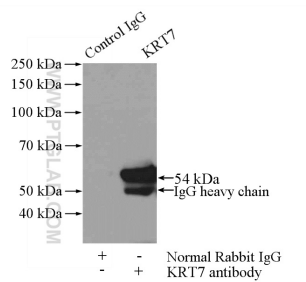
Various lysates were subjected to SDS PAGE followed by western blot with 17513-1-AP (Cytokeratin 7-specific antibody) at dilution of 1:100000 incubated at room temperature for 1.5 hours.



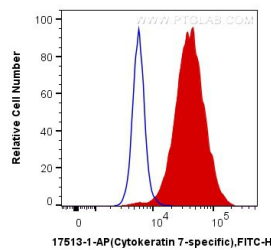
Immunohistochemical analysis of paraffin-embedded human lung cancer tissue slide using 17513-1-AP (Cytokeratin 7-specific antibody) at dilution of 1:2000 (under 10x lens). Heat mediated antigen retrieval with Tris-EDTA buffer (pH 9.0).



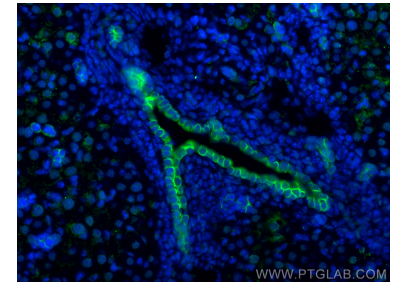
Immunohistochemical analysis of paraffin-embedded human lung cancer tissue slide using 17513-1-AP (Cytokeratin 7-specific antibody) at dilution of 1:2000 (under 40x Lens). Heat mediated antigen retrieval with Tris-EDTA buffer (pH 9.0).



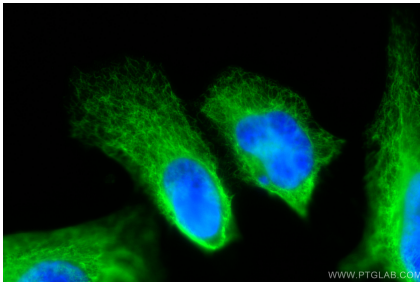
IP result of anti-Cytokeratin 7-specific (IP:17513-1-AP, 4ug; Detection:17513-1-AP 1:1000) with HepG2 cells lysate 3600ug.



1×10^6 HeLa cells were intracellularly stained with 0.2 ug Anti-Human Cytokeratin 7-specific (17513-1-AP) and CoraLite®488-Conjugated AffiniPure Goat Anti-Rabbit IgG(H+L) at dilution 1:1000 (red), or 0.2 ug Control Antibody. Cells were fixed with 4% PFA and permeabilized with Flow Cytometry Perm Buffer (PF00011-C).



Immunofluorescent analysis of (4% PFA) fixed paraffin-embedded mouse liver tissue using Cytokeratin 7-specific antibody (17513-1-AP) at dilution of 1:400 and CoraLite®488-Conjugated Goat Anti-Rabbit IgG(H+L) (SA00013-2). Heat mediated antigen retrieval with Tris-EDTA buffer (pH 9.0).



Immunofluorescent analysis of (-20°C Methanol) fixed HeLa cells using Cytokeratin 7-specific antibody (17513-1-AP) at dilution of 1:200 and CoraLite®488-Conjugated AffiniPure Goat Anti-Rabbit IgG(H+L).