

For Research Use Only

# Cytokeratin 17-Specific Polyclonal antibody

Catalog Number: 17516-1-AP

Featured Product

22 Publications



## Basic Information

### Catalog Number:

17516-1-AP

### Size:

600 ug/ml

### Source:

Rabbit

### Isotype:

IgG

### GenBank Accession Number:

NM\_000422

### GeneID (NCBI):

3872

### UNIPROT ID:

Q04695

### Full Name:

keratin 17

### Calculated MW:

48 kDa

### Observed MW:

48 kDa

### Purification Method:

Antigen affinity purification

### Recommended Dilutions:

WB 1:1000-1:20000

IP 0.5-4.0 ug for 1.0-3.0 mg of total protein lysate

IHC 1:4000-1:16000

IF/ICC 1:300-1:1200

## Applications

### Tested Applications:

WB, IHC, IF/ICC, IP, ELISA

### Cited Applications:

WB, IHC, IF, CoIP

### Species Specificity:

human, mouse

### Cited Species:

human, mouse

### Positive Controls:

WB : A431 cells, mouse skin tissue, HeLa cells

IP : A431 cells,

IHC : human bowen disease, human cervical cancer tissue, human lung cancer tissue

IF/ICC : HepG2 cells, HeLa cells

**Note-IHC: suggested antigen retrieval with TE buffer pH 9.0; (\*) Alternatively, antigen retrieval may be performed with citrate buffer pH 6.0**

## Background Information

Keratins are a large family of proteins that form the intermediate filament cytoskeleton of epithelial cells, which are classified into two major sequence types. Type I keratins are a group of acidic intermediate filament proteins, including K9-K23, and the hair keratins Ha1-Ha8. Type II keratins are the basic or neutral counterparts to the acidic type I keratins, including K1-K8, and the hair keratins, Hb1-Hb6. Keratin 17 is a type I cytokeratin. It is found in nail beds, hair follicles, sebaceous glands, and other epidermal appendages. It is used as a marker for trauma. This antibody is specifically against KRT17.

## Notable Publications

Author	Pubmed ID	Journal	Application
Mengjie Li	34845376	Oncogene	WB
Shidi Wu	31790685	Life Sci	WB
Xiaoqiu Zhou	30655849	Oncol Lett	IHC

## Storage

### Storage:

Store at -20°C. Stable for one year after shipment.

### Storage Buffer:

PBS with 0.02% sodium azide and 50% glycerol pH 7.3.

Aliquoting is unnecessary for -20°C storage

For technical support and original validation data for this product please contact:

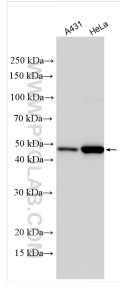
T: 4006900926

E: Proteintech-CN@ptglab.com

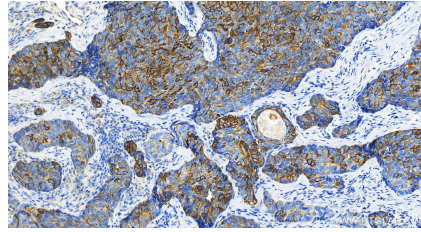
W: ptgcn.com

**This product is exclusively available under Proteintech Group brand and is not available to purchase from any other manufacturer.**

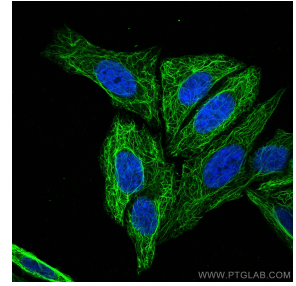
## Selected Validation Data



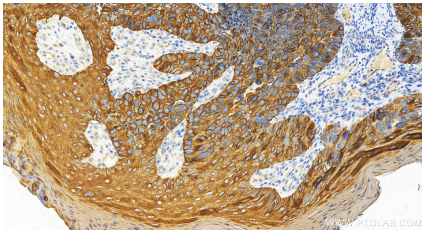
Various lysates were subjected to SDS PAGE followed by western blot with 17516-1-AP (Cytokeratin 17-Specific antibody) at dilution of 1:40000 incubated at room temperature for 1.5 hours.



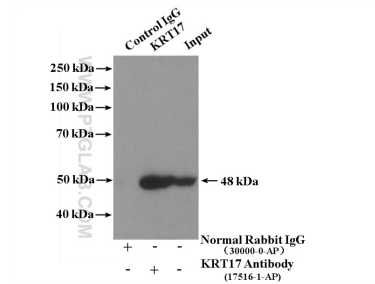
Immunohistochemical analysis of paraffin-embedded human Bowen disease slide using 17516-1-AP (Cytokeratin 17-Specific antibody) at dilution of 1:8000 (under 20x lens). Heat mediated antigen retrieval with Tris-EDTA buffer (pH 9.0).



Immunofluorescent analysis of (-20°C Methanol) fixed HepG2 cells using Cytokeratin 17-Specific antibody (17516-1-AP) at dilution of 1:600 and CoraLite®488-Conjugated AffiniPure Goat Anti-Rabbit IgG(H+L).



Immunohistochemical analysis of paraffin-embedded human Bowen disease slide using 17516-1-AP (Cytokeratin 17-Specific antibody) at dilution of 1:8000 (under 20x lens). Heat mediated antigen retrieval with Tris-EDTA buffer (pH 9.0).



IP result of anti-Cytokeratin 17-Specific (IP:17516-1-AP, 4ug; Detection:17516-1-AP 1:1000) with A431 cells lysate 1200ug.