

For Research Use Only

PLAP Polyclonal antibody

Catalog Number: 18507-1-AP

Featured Product

12 Publications



Basic Information

Catalog Number:

18507-1-AP

Concentration:

200 µg/ml

Source:

Rabbit

Isotype:

IgG

Immunogen Catalog Number:

AG13361

GenBank Accession Number:

BC009647

GeneID (NCBI):

250

UNIPROT ID:

P05187

Full Name:

alkaline phosphatase, placental (Regan isozyme)

Calculated MW:

58 kDa

Observed MW:

66 kDa

Purification Method:

Antigen affinity purification

Recommended Dilutions:

WB 1:1000-1:3000

IP 0.5-4.0 µg for 1.0-3.0 mg of total protein lysate

IHC 1:50-1:500

Applications

Tested Applications:

WB, IP, IHC, ELISA

Cited Applications:

WB, IHC

Species Specificity:

human, mouse

Cited Species:

human, mouse, rat

Note-IHC: suggested antigen retrieval with TE buffer pH 9.0; (*) Alternatively, antigen retrieval may be performed with citrate buffer pH 6.0

Positive Controls:

WB : human placenta tissue, mouse liver tissue, HepG2 cells

IP : HepG2 cells,

IHC : human placenta tissue,

Background Information

Placental alkaline phosphatase (PLAP) is a glycosyl phosphatidylinositol (GPI)-anchored sialoglycoprotein, which shows greater resistance to heat inactivation than other alkaline phosphatase. Presented at high levels in placental trophoblasts, PLAP is recognized as an important marker of differentiation in human malignancies.

Notable Publications

Author	Pubmed ID	Journal	Application
Jinhui Wu	34655661	Mol Cell Endocrinol	WB
Jie Xu	33690174	Aging (Albany NY)	WB
Halina Jurkowska	29508061	Amino Acids	WB

Storage

Storage:

Store at -20°C. Stable for one year after shipment.

Storage Buffer:

PBS with 0.02% sodium azide and 50% glycerol pH 7.3.

Aliquoting is unnecessary for -20°C storage

For technical support and original validation data for this product please contact:

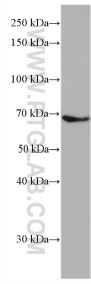
T: 4006900926

E: Proteintech-CN@ptglab.com

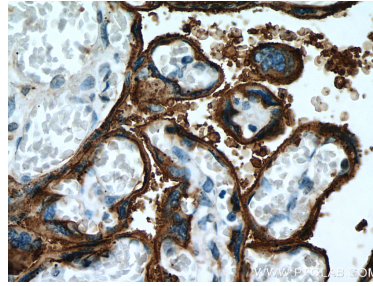
W: ptgcn.com

This product is exclusively available under Proteintech Group brand and is not available to purchase from any other manufacturer.

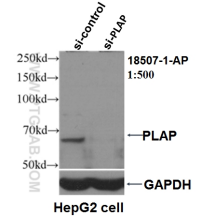
Selected Validation Data



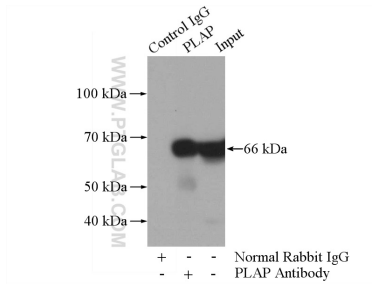
human placenta tissue were subjected to SDS PAGE followed by western blot with 18507-1-AP (PLAP antibody) at dilution of 1:2000 incubated at room temperature for 1.5 hours.



Immunohistochemical analysis of paraffin-embedded human placenta tissue slide using 18507-1-AP (PLAP antibody) at dilution of 1:200 (under 40x lens). Heat mediated antigen retrieval with Tris-EDTA buffer (pH 9.0).



WB result of PLAP antibody (18507-1-AP, 1:500) with si-control and si-PLAP transfected HepG2 cells.



IP result of anti-PLAP (IP:18507-1-AP, 4ug; Detection:18507-1-AP 1:700) with HepG2 cells lysate 1800ug.