

For Research Use Only

# CALCR Polyclonal antibody

Catalog Number: 20868-1-AP

6 Publications



## Basic Information

<b>Catalog Number:</b> 20868-1-AP	<b>GenBank Accession Number:</b> BC075028	<b>Purification Method:</b> Antigen affinity purification
<b>Concentration:</b> 900 ug/ml	<b>GeneID (NCBI):</b> 799	<b>Recommended Dilutions:</b> WB 1:500-1:1000
<b>Source:</b> Rabbit	<b>UNIPROT ID:</b> P30988	
<b>Isotype:</b> IgG	<b>Full Name:</b> calcitonin receptor	
<b>Immunogen Catalog Number:</b> AG14920	<b>Calculated MW:</b> 490 aa, 57 kDa	
	<b>Observed MW:</b> 70 kDa	

## Applications

<b>Tested Applications:</b> WB, ELISA	<b>Positive Controls:</b> WB : MCF-7 cells, PC-12 cells, mouse brain tissue, mouse kidney tissue
<b>Cited Applications:</b> WB	
<b>Species Specificity:</b> human, mouse	
<b>Cited Species:</b> human, mouse	

## Background Information

The CALCR protein, also known as the calcitonin receptor, is a high-affinity receptor for the peptide hormone calcitonin and belongs to the subfamily of seven transmembrane-spanning G protein-coupled receptors. This protein plays a critical role in maintaining calcium homeostasis and regulating osteoclast-mediated bone resorption. The calcitonin receptor is involved in several physiological processes, including inhibition of osteoclastic bone resorption and increased renal calcium excretion, which helps to regulate Ca<sup>2+</sup> concentrations. In addition, the CALCR protein has been detected in a variety of tissues not directly involved in the regulation of calcium homeostasis, with particular expression observed in the brain, suggesting distinct functions in the central nervous system (CNS) (PMID: 12730726).

## Notable Publications

Author	Pubmed ID	Journal	Application
Ming-Wei Lin	36135183	Curr Issues Mol Biol	WB
Fangyuan Shao	33304752	Adv Sci (Weinh)	WB
Yu Fu	34294046	Mol Med	WB

## Storage

**Storage:**  
Store at -20°C. Stable for one year after shipment.  
**Storage Buffer:**  
PBS with 0.02% sodium azide and 50% glycerol pH 7.3.  
Aliquoting is unnecessary for -20°C storage

For technical support and original validation data for this product please contact:

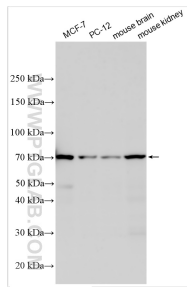
T: 4006900926

E: [Proteintech-CN@ptglab.com](mailto:Proteintech-CN@ptglab.com)

W: [ptgcn.com](http://ptgcn.com)

This product is exclusively available under Proteintech Group brand and is not available to purchase from any other manufacturer.

## Selected Validation Data



Various lysates were subjected to SDS PAGE followed by western blot with 20868-1-AP (CALCR antibody) at dilution of 1:600 incubated at room temperature for 1.5 hours.