

For Research Use Only

# ER Polyclonal antibody

Catalog Number: 21244-1-AP

Featured Product

138 Publications



## Basic Information

**Catalog Number:**

21244-1-AP

**Concentration:**

600 ug/ml

**Source:**

Rabbit

**Isotype:**

IgG

**Immunogen Catalog Number:**

AG15738

**GenBank Accession Number:**

BC128573

**GeneID (NCBI):**

2099

**UNIPROT ID:**

P03372

**Full Name:**

estrogen receptor 1

**Calculated MW:**

595 aa, 66 kDa

**Observed MW:**

65-70 kDa

**Purification Method:**

Antigen affinity purification

**Recommended Dilutions:**

WB 1:500-1:2000

IHC 1:50-1:500

## Applications

**Tested Applications:**

WB, IHC, ELISA

**Cited Applications:**

WB, IHC, IF, CoIP

**Species Specificity:**

human, mouse, rat

**Cited Species:**

human, mouse, rat, bovine, goat

**Note-IHC: suggested antigen retrieval with TE buffer pH 9.0; (\*) Alternatively, antigen retrieval may be performed with citrate buffer pH 6.0**

**Positive Controls:**

WB : HeLa cells, mouse testis tissue, NIH/3T3 cells, rat testis tissue, MCF-7 cells

IHC : human cervical cancer tissue,

## Background Information

The estrogen receptor (ESR, ER) is a ligand-activated transcription factor composed of several domains important for hormone binding, DNA binding, and activation of transcription. ESR1, also known as ESR or NR3A1, belongs to the nuclear hormone receptor family and NR3 subfamily. It is a nuclear hormone receptor. The steroid hormones and their receptors are involved in the regulation of eukaryotic gene expression and affect cellular proliferation and differentiation in target tissues. ESR1 can activate the transcriptional activity of TFF1.[PMID: 11731608,10970861]

## Notable Publications

Author	Pubmed ID	Journal	Application
Hao Li	36123318	Phytother Res	WB
Xiaojuan Shao	33014211	Can J Infect Dis Med Microbiol	IHC
Ying Fu	27815936	Croat Med J	WB

## Storage

**Storage:**

Store at -20°C. Stable for one year after shipment.

**Storage Buffer:**

PBS with 0.02% sodium azide and 50% glycerol, pH7.3

Aliquoting is unnecessary for -20°C storage

For technical support and original validation data for this product please contact:

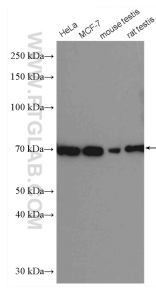
T: 4006900926

E: Proteintech-CN@ptglab.com

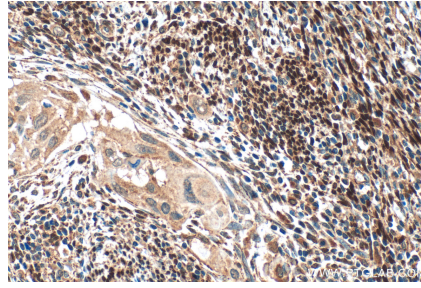
W: ptgcn.com

**This product is exclusively available under Proteintech Group brand and is not available to purchase from any other manufacturer.**

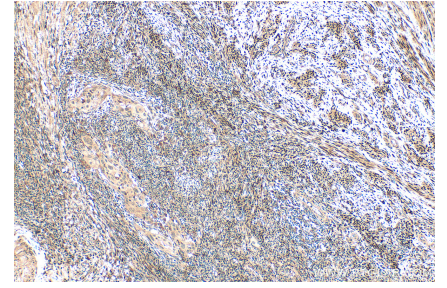
## Selected Validation Data



Various lysates were subjected to SDS PAGE followed by western blot with 21244-1-AP (ER antibody) at dilution of 1:1000 incubated at room temperature for 1.5 hours.



Immunohistochemical analysis of paraffin-embedded human cervical cancer tissue slide using 21244-1-AP (ER antibody) at dilution of 1:200 (under 40x lens). Heat mediated antigen retrieval with Tris-EDTA buffer (pH 9.0).



Immunohistochemical analysis of paraffin-embedded human cervical cancer tissue slide using 21244-1-AP (ER antibody) at dilution of 1:200 (under 0x lens). Heat mediated antigen retrieval with Tris-EDTA buffer (pH 9.0).