

For Research Use Only

# CD107a / LAMP1 Polyclonal antibody

Catalog Number: 21997-1-AP

140 Publications



## Basic Information

|   |  |  |
|---|--|--|
| <b>Catalog Number:</b><br>21997-1-AP        | <b>GenBank Accession Number:</b><br>BC021288                 | <b>Purification Method:</b><br>Antigen affinity purification                           |
| <b>Concentration:</b><br>800 ug/ml          | <b>GeneID (NCBI):</b><br>3916                                | <b>Recommended Dilutions:</b><br>WB 1:1000-1:8000<br>IHC 1:50-1:500<br>IF-P 1:50-1:500 |
| <b>Source:</b><br>Rabbit                    | <b>ENSEMBL Gene ID:</b><br>ENSG00000185896                   |  |
| <b>Isotype:</b><br>IgG                      | <b>UNIPROT ID:</b><br>P11279                                 |  |
| <b>Immunogen Catalog Number:</b><br>AG17367 | <b>Full Name:</b><br>lysosomal-associated membrane protein 1 |  |
|   | <b>Calculated MW:</b><br>45 kDa                              |  |
|   | <b>Observed MW:</b><br>90-120 kDa                            |  |

## Applications

|  |  |
|--|--|
| <b>Tested Applications:</b><br>WB, IHC, IF-P, ELISA  | <b>Positive Controls:</b><br>WB : HepG2 cells, U937 cells  |
| <b>Cited Applications:</b><br>WB, IHC, IP, ColP  | <b>IHC :</b> human liver cancer tissue, human placenta tissue, human gliomas tissue, human pancreas tissue |
| <b>Species Specificity:</b><br>human   | <b>IF-P :</b> human ovary tumor tissue,  |
| <b>Cited Species:</b><br>human, pig, monkey, zebrafish, bovine, turtle   |  |
| <b>Note-IHC: suggested antigen retrieval with TE buffer pH 9.0; (*) Alternatively, antigen retrieval may be performed with citrate buffer pH 6.0</b> |  |

## Background Information

LAMP1 (also known as CD107a) is a 90-120 kDa heavily glycosylated membrane protein enriched in the lysosomal membrane. LAMP1 functions to provide selectins with carbohydrate ligands. This protein has also been shown to be a marker of degranulation on lymphocytes such as CD8+ and NK cells and may also play a role in tumor cell differentiation and metastasis.

## Notable Publications

| Author   | Pubmed ID | Journal           | Application |
|----------|-----------|-------------------|-------------|
| Wei Cai  | 36170234  | Autophagy         |             |
| Yong Fan | 34560177  | Food Chem Toxicol | WB          |
| Jie Liu  | 36096243  | Life Sci          | WB          |

## Storage

**Storage:**  
Store at -20°C. Stable for one year after shipment.  
**Storage Buffer:**  
PBS with 0.02% sodium azide and 50% glycerol, pH7.3  
Aliquoting is unnecessary for -20°C storage

For technical support and original validation data for this product please contact:

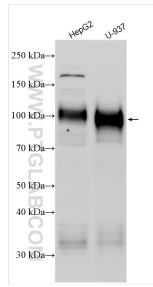
T: 4006900926

E: Proteintech-CN@ptglab.com

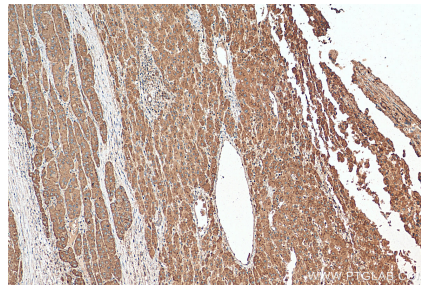
W: ptgcn.com

**This product is exclusively available under Proteintech Group brand and is not available to purchase from any other manufacturer.**

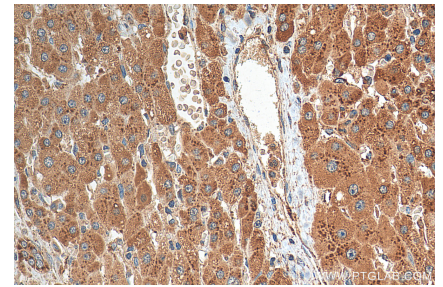
## Selected Validation Data



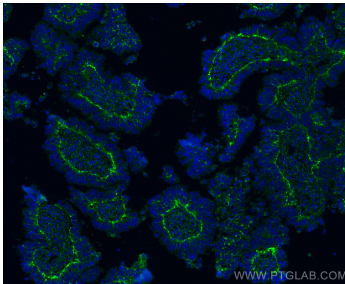
Various lysates were subjected to SDS PAGE followed by western blot with 21997-1-AP (CD107a / LAMP1 antibody) at dilution of 1:4000 incubated at room temperature for 1.5 hours.



Immunohistochemical analysis of paraffin-embedded human liver cancer tissue slide using 21997-1-AP (LAMP1 antibody) at dilution of 1:200 (under 10x lens). Heat mediated antigen retrieval with Tris-EDTA buffer (pH 9.0).



Immunohistochemical analysis of paraffin-embedded human liver cancer tissue slide using 21997-1-AP (LAMP1 antibody) at dilution of 1:200 (under 40x lens). Heat mediated antigen retrieval with Tris-EDTA buffer (pH 9.0).



Immunofluorescent analysis of (4% PFA) fixed paraffin-embedded human ovary tumor tissue using CD107a / LAMP1 antibody (21997-1-AP) at dilution of 1:200 and Coralite®488-Conjugated Goat Anti-Rabbit IgG(H+L) (SA00013-2). Heat mediated antigen retrieval with Tris-EDTA buffer (pH 9.0).