

For Research Use Only

Caspase 1/P20/P10 Polyclonal antibody

Catalog Number: 22915-1-AP

Featured Product

933 Publications



Basic Information

Catalog Number:

22915-1-AP

Concentration:

650 ug/ml

Source:

Rabbit

Isotype:

IgG

Immunogen Catalog Number:

AG11143

GenBank Accession Number:

BC062327

GeneID (NCBI):

834

UNIPROT ID:

P29466

Full Name:

caspase 1, apoptosis-related cysteine peptidase (interleukin 1, beta, convertase)

Calculated MW:

404 aa, 45 kDa

Observed MW:

45-47 kDa, 30 kDa, 35 kDa

Purification Method:

Antigen affinity purification

Recommended Dilutions:

WB 1:2000-1:12000

IHC 1:100-1:400

Applications

Tested Applications:

WB, IHC, IF, ELISA

Cited Applications:

WB, IHC, IF, IP

Species Specificity:

human

Cited Species:

human, pig, canine, monkey, chicken, bovine, hamster

Note-IHC: suggested antigen retrieval with TE buffer pH 9.0; (*) Alternatively, antigen retrieval may be performed with citrate buffer pH 6.0

Positive Controls:

WB: Raji cells, HepG2 cells, THP-1 cells, U-937 cells, PC-12 cells

IHC: human spleen tissue,

Background Information

CASP1(caspase-1) is also named as IL18C, IL18CE and belongs to the peptidase C14A family. It is a cysteine protease that regulates inflammatory processes through its capacity to process and activate the interleukin-1-beta (IL1B), IL18, and IL33 precursor proteins. The active caspase-1 can increase cellular membrane permeability and intracellular calcium levels, which facilitates lysosome exocytosis and release of host antimicrobial factors and microbial products (PMID:21804020). It has 5 isoforms produced by alternative splicing. 22915-1-AP can recognize all the five isoforms of caspase 1. It also can recognize p45 procaspase and the mature fragment p20.

Notable Publications

Author	Pubmed ID	Journal	Application
Lin-Tao Xu	34601084	J Ethnopharmacol	WB
DANDAN FENG	34650637	Exp Ther Med	WB
Xin Liu	34586578	J Bioenerg Biomembr	WB

Storage

Storage:

Store at -20°C. Stable for one year after shipment.

Storage Buffer:

PBS with 0.02% sodium azide and 50% glycerol, pH7.3

Aliquoting is unnecessary for -20°C storage

For technical support and original validation data for this product please contact:

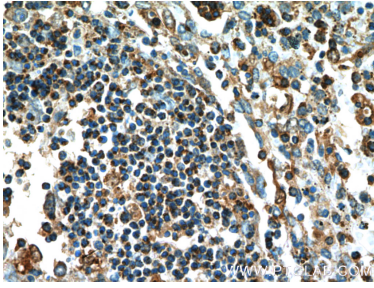
T: 4006900926

E: Proteintech-CN@ptglab.com

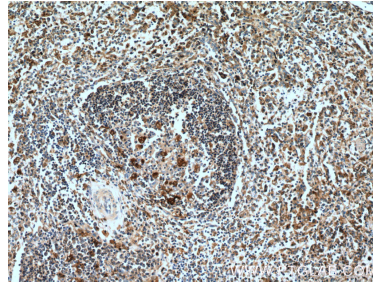
W: ptgcn.com

This product is exclusively available under Proteintech Group brand and is not available to purchase from any other manufacturer.

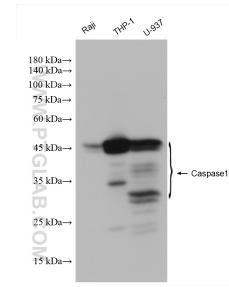
Selected Validation Data



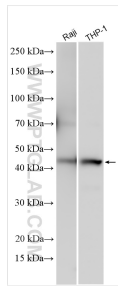
Immunohistochemical analysis of paraffin-embedded human spleen tissue slide using 22915-1-AP (Caspase 1/P20/P10 Antibody) at dilution of 1:200 (under 10x lens).



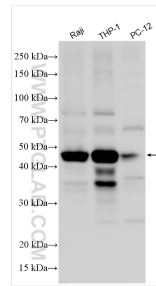
Immunohistochemical analysis of paraffin-embedded human spleen tissue slide using 22915-1-AP (Caspase 1/P20/P10 Antibody) at dilution of 1:200 (under 40x lens).



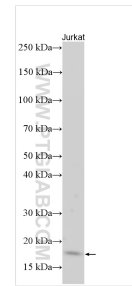
Various lysates were subjected to SDS PAGE followed by western blot with 22915-1-AP (Caspase 1/P20/P10 antibody) at dilution of 1:6000 incubated at room temperature for 1.5 hours.



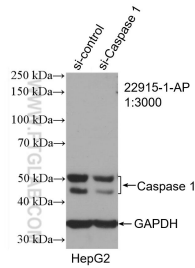
Various lysates were subjected to SDS PAGE followed by western blot with 22915-1-AP (Caspase 1/P20/P10 antibody) at dilution of 1:8000 incubated at room temperature for 1.5 hours.



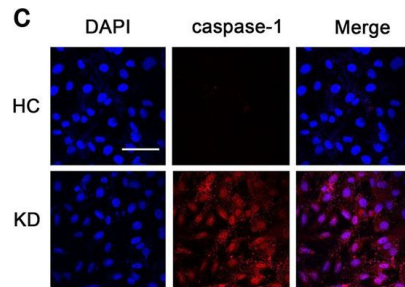
Various lysates were subjected to SDS PAGE followed by western blot with 22915-1-AP (Caspase 1/P20/P10 antibody) at dilution of 1:8000 incubated at room temperature for 1.5 hours.



Various lysates were subjected to SDS PAGE followed by western blot with 22915-1-AP (Caspase 1/P20/P10 antibody) at dilution of 1:5000 incubated at room temperature for 1.5 hours.



WB result of Caspase 1/P20/P10 antibody (22915-1-AP; 1:3000; incubated at room temperature for 1.5 hours) with sh-Control and sh-Caspase 1/p20/p10 transfected HepG2 cells.



IF result of 22915-1-AP from publication with PMID: 31611559.