

For Research Use Only

hCG Alpha Polyclonal antibody

Catalog Number: 25014-1-AP **5 Publications**



Basic Information

Catalog Number: 25014-1-AP	GenBank Accession Number: BC020782	Purification Method: Antigen affinity purification
Size: 650 µg/ml	GeneID (NCBI): 1081	Recommended Dilutions: WB 1:1000-1:4000 IHC 1:1000-1:4000
Source: Rabbit	UNIPROT ID: P01215	
Isotype: IgG	Full Name: glycoprotein hormones, alpha polypeptide	
Immunogen Catalog Number: AG17313	Calculated MW: 116 aa, 13 kDa	
	Observed MW: 22 kDa	

Applications

Tested Applications: WB, IHC, ELISA	Positive Controls: WB : JAR cells, human placenta tissue IHC : human placenta tissue,
Cited Applications: WB, IHC, IF	
Species Specificity: human	
Cited Species: human	

Note-IHC: suggested antigen retrieval with TE buffer pH 9.0; (*) Alternatively, antigen retrieval may be performed with citrate buffer pH 6.0

Background Information

Notable Publications

Author	Pubmed ID	Journal	Application
Zhenghao Wu	35101946	J Immunother Cancer	WB,IF
Hua Huang	35521536	iScience	WB
Xiaochun Teng	25867808	J Clin Endocrinol Metab	IHC

Storage

Storage:
Store at -20°C. Stable for one year after shipment.
Storage Buffer:
PBS with 0.02% sodium azide and 50% glycerol pH 7.3.
Aliquoting is unnecessary for -20°C storage

For technical support and original validation data for this product please contact:

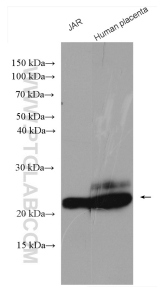
T: 4006900926

E: Proteintech-CN@ptglab.com

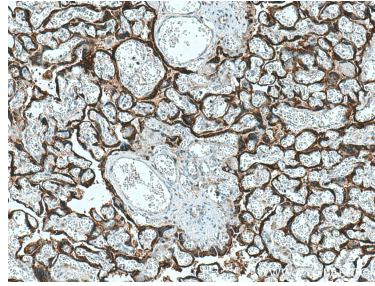
W: ptgcn.com

This product is exclusively available under Proteintech Group brand and is not available to purchase from any other manufacturer.

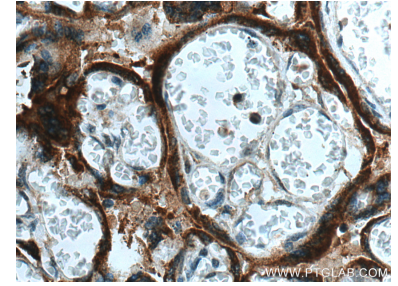
Selected Validation Data



Various lysates were subjected to SDS PAGE followed by western blot with 25014-1-AP (hCG alpha antibody) at dilution of 1:2000 incubated at room temperature for 1.5 hours.



Immunohistochemical analysis of paraffin-embedded human placenta tissue slide using 25014-1-AP (hCG Alpha antibody) at dilution of 1:2000 (under 10x lens). Heat mediated antigen retrieval with Tris-EDTA buffer (pH 9.0).



Immunohistochemical analysis of paraffin-embedded human placenta tissue slide using 25014-1-AP (hCG Alpha antibody) at dilution of 1:2000 (under 40x lens). Heat mediated antigen retrieval with Tris-EDTA buffer (pH 9.0).