

For Research Use Only

VGLUT2 Polyclonal antibody

Catalog Number: 25261-1-AP



Basic Information

Catalog Number:

25261-1-AP

Concentration:

900 ug/ml

Source:

Rabbit

Isotype:

IgG

GenBank Accession Number:

NM_020346

GeneID (NCBI):

57084

UNIPROT ID:

Q9P2U8

Full Name:

solute carrier family 17 (sodium-dependent inorganic phosphate cotransporter), member 6

Calculated MW:

64 kDa

Observed MW:

60 kDa

Purification Method:

Antigen affinity purification

Recommended Dilutions:

WB 1:1000-1:8000

Applications

Tested Applications:

WB, ELISA

Species Specificity:

human, rat

Positive Controls:

WB: unboiled rat brain tissue, fetal human brain tissue

Background Information

VGLUT2, also known as SLC17A6, belongs to the major facilitator superfamily. VGLUT2 is a multifunctional transporter that transports phosphate at the plasma membrane and glutamate in synaptic vesicles (PMID:33440152, 11432869). VGLUT2 is involved in neurotransmitter loading into synaptic vesicle (PMID: 11698620). VGLUT2 is predominantly expressed in adult and fetal brain, with highest expression in the medulla, substantia nigra, subthalamic nucleus, and thalamus, and low levels in the cerebellum and hippocampus (PMID:10820226).

Storage

Storage:

Store at -20°C. Stable for one year after shipment.

Storage Buffer:

PBS with 0.02% sodium azide and 50% glycerol pH 7.3.

Aliquoting is unnecessary for -20°C storage

For technical support and original validation data for this product please contact:

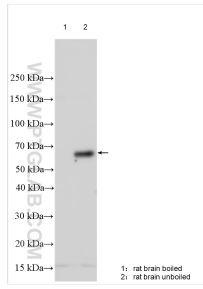
T: 4006900926

E: Proteintech-CN@ptglab.com

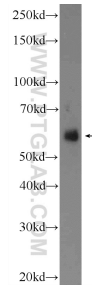
W: ptgcn.com

This product is exclusively available under Proteintech Group brand and is not available to purchase from any other manufacturer.

Selected Validation Data



unboiled rat brain tissue were subjected to SDS PAGE followed by western blot with 25261-1-AP (VGLUT2 antibody) at dilution of 1:4000 incubated at room temperature for 1.5 hours.



fetal human brain tissue were subjected to SDS PAGE followed by western blot with 25261-1-AP (VGLUT2 antibody at dilution of 1:600 incubated at room temperature for 1.5 hours.