

# Progesterone Receptor Polyclonal antibody

Catalog Number: 25871-1-AP

32 Publications

## Basic Information

## Catalog Number:

25871-1-AP

## Source:

Rabbit

## Isotype:

IgG

## Immunogen Catalog Number:

AG22986

## GenBank Accession Number:

NM\_000926

## GeneID (NCBI):

5241

## UNIPROT ID:

P06401

## Full Name:

progesterone receptor

## Calculated MW:

933 aa, 99 kDa

## Observed MW:

80 kDa, 110-115 kDa

## Purification Method:

Antigen affinity purification

## Recommended Dilutions:

WB: 1:5000-1:50000

IHC: 1:200-1:800

IF/ICC: 1:50-1:500

## Applications

## Tested Applications:

WB, IHC, IF/ICC, ELISA

## Cited Applications:

WB, IHC, IF

## Species Specificity:

human, mouse

## Cited Species:

human, mouse, rat, pig, goat

**Note-IHC: suggested antigen retrieval with TE buffer pH 9.0; (\*) Alternatively, antigen retrieval may be performed with citrate buffer pH 6.0**

## Positive Controls:

WB: T-47D cells,

IHC: human breast cancer tissue, human ovary tumor tissue

IF/ICC: T-47D cells,

## Background Information

PGR (Progesterone Receptor), also named as NR3C3 and PR, belongs to the nuclear hormone receptor family and NR3 subfamily. The steroid hormones and their receptors are involved in the regulation of eukaryotic gene expression and affect cellular proliferation and differentiation in target tissues. Progesterone receptor isoform B (PRB) is involved activation of c-SRC/MAPK signaling on hormone stimulation. The ER and PR status has been used as a predictor of breast carcinoma responsiveness to endocrine therapy and as a prognostic indicator for early recurrence. This antibody recognizes both PR-A and PR-B.

## Notable Publications

Author	Pubmed ID	Journal	Application
Jumin Park	34551427	Nucleic Acids Res	IF, WB
Guanying Feng	32873626	Mol Cancer Res	WB
Christopher Khayeka-Wandabwa	34725776	Breast Cancer Res Treat	IHC

## Storage

## Storage:

Store at -20°C. Stable for one year after shipment.

## Storage Buffer:

PBS with 0.02% sodium azide and 50% glycerol, pH7.3

Aliquoting is unnecessary for -20°C storage

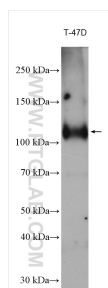
For technical support and original validation data for this product please contact:

T: 4006900926

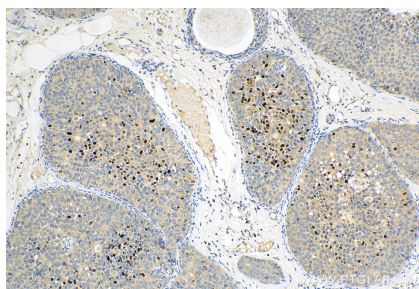
E: [Proteintech-CN@ptglab.com](mailto:Proteintech-CN@ptglab.com)W: [ptgcn.com](http://ptgcn.com)

This product is exclusively available under Proteintech Group brand and is not available to purchase from any other manufacturer.

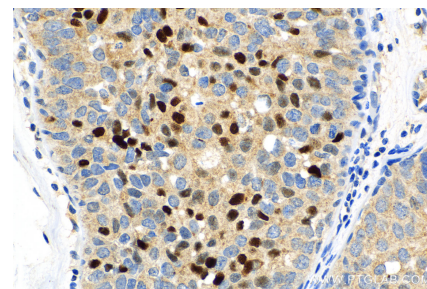
## Selected Validation Data



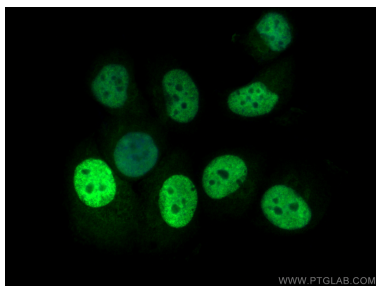
T-47D cells were subjected to SDS PAGE followed by western blot with 25871-1-AP (Progesterone Receptor antibody) at dilution of 1:20000 incubated at room temperature for 1.5 hours.



Immunohistochemical analysis of paraffin-embedded human breast cancer tissue slide using 25871-1-AP (Progesterone Receptor antibody) at dilution of 1:400 (under 10x lens). Heat mediated antigen retrieval with Tris-EDTA buffer (pH 9.0).



Immunohistochemical analysis of paraffin-embedded human breast cancer tissue slide using 25871-1-AP (Progesterone Receptor antibody) at dilution of 1:400 (under 40x lens). Heat mediated antigen retrieval with Tris-EDTA buffer (pH 9.0).



Immunofluorescent analysis of (4% PFA) fixed T-47D cells using Progesterone Receptor antibody (25871-1-AP) at dilution of 1:200 and CoraLite®488-Conjugated AffiniPure Goat Anti-Rabbit IgG(H+L).