

For Research Use Only

ASPM Polyclonal antibody

Catalog Number: 26223-1-AP

Featured Product

18 Publications



Basic Information

Catalog Number:

26223-1-AP

Size:

650 µg/ml

Source:

Rabbit

Isotype:

IgG

Immunogen Catalog Number:

AG24166

GenBank Accession Number:

BC034607

GeneID (NCBI):

259266

UNIPROT ID:

Q8IZT6

Full Name:

asp (abnormal spindle) homolog,
microcephaly associated (Drosophila)

Calculated MW:

410 kDa or 218 kDa

Observed MW:

218 kDa

Purification Method:

Antigen affinity purification

Recommended Dilutions:

WB 1:500-1:1000

IHC 1:50-1:500

IF/ICC 1:150-1:600

Applications

Tested Applications:

WB, IHC, IF/ICC, ELISA

Cited Applications:

WB, IHC, IF, IP, CoIP

Species Specificity:

human

Cited Species:

human, mouse

Note-IHC: suggested antigen retrieval with TE buffer pH 9.0; (*) Alternatively, antigen retrieval may be performed with citrate buffer pH 6.0

Positive Controls:

WB: HEK-293T cells, K-562 cells

IHC: human prostate cancer tissue, human gliomas tissue, human ovary tumor tissue

IF/ICC: HeLa cells,

Background Information

Notable Publications

Author	Pubmed ID	Journal	Application
Chuanxin Zhang	36242049	J Ovarian Res	IF
Tianyu Wu	36395215	Science	IF
Lu Wang	34741399	Kaohsiung J Med Sci	WB, CoIP

Storage

Storage:

Store at -20°C. Stable for one year after shipment.

Storage Buffer:

PBS with 0.02% sodium azide and 50% glycerol pH 7.3.

Aliquoting is unnecessary for -20°C storage

For technical support and original validation data for this product please contact:

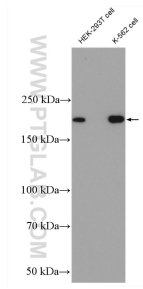
T: 4006900926

E: Proteintech-CN@ptglab.com

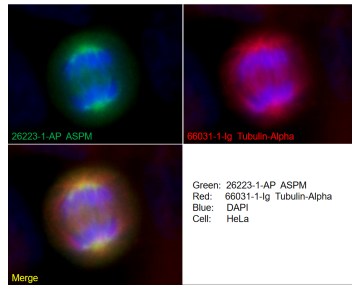
W: ptgcn.com

This product is exclusively available under Proteintech Group brand and is not available to purchase from any other manufacturer.

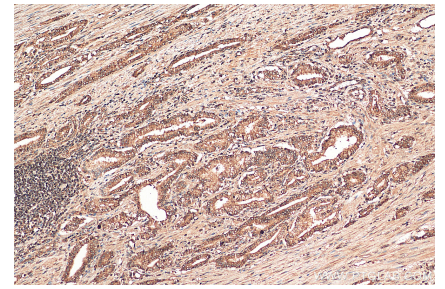
Selected Validation Data



Various lysates were subjected to SDS PAGE followed by western blot with 26223-1-AP (ASPM antibody) at dilution of 1:600 incubated at room temperature for 1.5 hours.



Immunofluorescent analysis of (4% PFA) fixed HeLa cells using 26223-1-AP (ASPM antibody), at dilution of 1:300 and CoraLite®488-Conjugated Goat Anti-Rabbit IgG(H+L). Cells were co-stained with alpha tubulin (66031-1-Ig, red).



Immunohistochemical analysis of paraffin-embedded human prostate cancer tissue slide using 26223-1-AP (ASPM antibody) at dilution of 1:200 (under 10x lens). Heat mediated antigen retrieval with Tris-EDTA buffer (pH 9.0).