

For Research Use Only

# Malectin Polyclonal antibody

Catalog Number: 26655-1-AP

Featured Product

8 Publications



## Basic Information

**Catalog Number:**

26655-1-AP

**Size:**

450 ug/ml

**Source:**

Rabbit

**Isotype:**

IgG

**Immunogen Catalog Number:**

AG24379

**GenBank Accession Number:**

BC000371

**GeneID (NCBI):**

9761

**UNIPROT ID:**

Q14165

**Full Name:**

malectin

**Calculated MW:**

292 aa, 32 kDa

**Observed MW:**

32 kDa

**Purification Method:**

Antigen affinity purification

**Recommended Dilutions:**

WB 1:500-1:1000

## Applications

**Tested Applications:**

WB, ELISA

**Cited Applications:**

WB, IF

**Species Specificity:**

human, mouse, rat

**Cited Species:**

human, mouse, rat

**Positive Controls:**

WB : mouse colon tissue, human placenta tissue, rat colon tissue

## Background Information

Malectin is a conserved, endoplasmic reticulum (ER)-resident lectin that recognizes high mannose oligosaccharides displaying terminal glucose residues. Like other intracellular lectins involved in glycoprotein quality control, malectin is highly conserved in animals (PMID: 21298103).

## Notable Publications

Author	Pubmed ID	Journal	Application
Ning Jiang	33144078	Exp Cell Res	WB
Naoki Fujitani	33983715	Biochemistry	WB
Amanda DiGuilio	39259761	Mol Biol Cell	

## Storage

**Storage:**

Store at -20°C. Stable for one year after shipment.

**Storage Buffer:**

PBS with 0.02% sodium azide and 50% glycerol pH 7.3.

Aliquoting is unnecessary for -20°C storage

For technical support and original validation data for this product please contact:

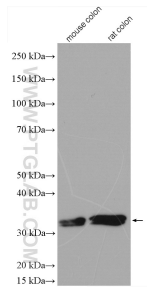
T: 4006900926

E: [Proteintech-CN@ptglab.com](mailto:Proteintech-CN@ptglab.com)

W: [ptgcn.com](http://ptgcn.com)

**This product is exclusively available under Proteintech Group brand and is not available to purchase from any other manufacturer.**

## Selected Validation Data



Various lysates were subjected to SDS PAGE followed by western blot with 26655-1-AP (Malectin antibody) at dilution of 1:800 incubated at room temperature for 1.5 hours.