

For Research Use Only

# CXCL2 Polyclonal antibody

Catalog Number: 26791-1-AP

8 Publications



## Basic Information

<b>Catalog Number:</b> 26791-1-AP	<b>GenBank Accession Number:</b> BC015753	<b>Purification Method:</b> Antigen affinity purification
<b>Concentration:</b> 600 µg/ml	<b>GeneID (NCBI):</b> 2920	<b>Recommended Dilutions:</b> WB 1:500-1:1000
<b>Source:</b> Rabbit	<b>UNIPROT ID:</b> P19875	
<b>Isotype:</b> IgG	<b>Full Name:</b> chemokine (C-X-C motif) ligand 2	
<b>Immunogen Catalog Number:</b> AG25376	<b>Calculated MW:</b> 107 aa, 11 kDa	
	<b>Observed MW:</b> 11 kDa	

## Applications

<b>Tested Applications:</b> WB, ELISA	<b>Positive Controls:</b> WB : HepG2 cells, human milk, rat lung tissue, mouse lung tissue
<b>Cited Applications:</b> WB, IF	
<b>Species Specificity:</b> human, mouse, rat	
<b>Cited Species:</b> human, mouse, rat	

## Background Information

CXCL2, also known as macrophage inflammatory protein 2-alpha (MIP2-alpha), is a member of CXC chemokine family that binds to CXC chemokine receptor 2 (CXCR2). CXCL2 is mainly produced by macrophages, endothelial cells, epithelial cells and tumor cells. CXCL2 plays important roles in various biological progresses such as angiogenesis, inflammation, immune response and cancer biological behaviors. Under inflammatory conditions in CNS, microglia and astrocytes may secrete CXCL2 as well as other chemokines, which induces chemotaxis and infiltration of circulatory neutrophils. Indeed, previous studies suggest that CXCL2 is involved in Alzheimer disease, multiple sclerosis and brain ischemia.

## Notable Publications

Author	Pubmed ID	Journal	Application
Lu Wang	34555641	Int Immunopharmacol	WB
Guozhen Wang	34507947	J Immunol	WB
Shuang Ge	34830293	Int J Mol Sci	IF

## Storage

**Storage:**  
Store at -20°C. Stable for one year after shipment.  
**Storage Buffer:**  
PBS with 0.02% sodium azide and 50% glycerol pH 7.3.  
Aliquoting is unnecessary for -20°C storage

For technical support and original validation data for this product please contact:

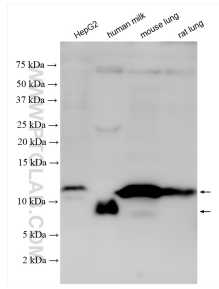
T: 4006900926

E: [Proteintech-CN@ptglab.com](mailto:Proteintech-CN@ptglab.com)

W: [ptgcn.com](http://ptgcn.com)

**This product is exclusively available under Proteintech Group brand and is not available to purchase from any other manufacturer.**

## Selected Validation Data



Various lysates were subjected to SDS PAGE followed by western blot with 26791-1-AP (CXCL2 antibody) at dilution of 1:500 incubated at room temperature for 1.5 hours.