

For Research Use Only

CEP170 Polyclonal antibody

Catalog Number: 27325-1-AP

Featured Product

7 Publications



Basic Information

Catalog Number:

27325-1-AP

Concentration:

300 µg/ml

Source:

Rabbit

Isotype:

IgG

Immunogen Catalog Number:

AG26311

GenBank Accession Number:

BC140794

GeneID (NCBI):

9859

UNIPROT ID:

Q55W79

Full Name:

centrosomal protein 170kDa

Calculated MW:

1486 aa, 165 kDa

Observed MW:

170-190 kDa

Purification Method:

Antigen affinity purification

Recommended Dilutions:

WB 1:500-1:1000

IF/ICC 1:50-1:500

Applications

Tested Applications:

WB, IF/ICC, ELISA

Cited Applications:

WB, IF

Species Specificity:

human

Cited Species:

human, mouse

Positive Controls:

WB : MCF-7 cells, HeLa cells

IF/ICC : HeLa cells,

Background Information

Notable Publications

Author	Pubmed ID	Journal	Application
Tianyu Wu	36395215	Science	IF
Shuyun Ma	33404607	J Cell Biol	IF
Dandan Ma	35119360	Elife	WB,IF

Storage

Storage:

Store at -20°C. Stable for one year after shipment.

Storage Buffer:

PBS with 0.02% sodium azide and 50% glycerol pH 7.3.

Aliquoting is unnecessary for -20°C storage

For technical support and original validation data for this product please contact:

T: 4006900926

E: Proteintech-CN@ptglab.com

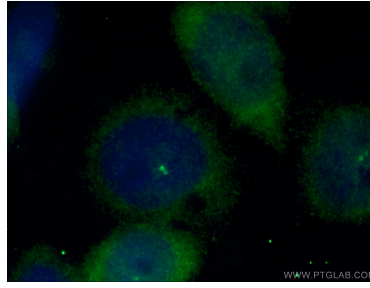
W: ptgcn.com

This product is exclusively available under Proteintech Group brand and is not available to purchase from any other manufacturer.

Selected Validation Data



MCF-7 cells were subjected to SDS PAGE followed by western blot with 27325-1-AP (CEP170 antibody) at dilution of 1:600 incubated at room temperature for 1.5 hours.



Immunofluorescent analysis of (-20°C Ethanol) fixed HeLa cells using 27325-1-AP (CEP170 antibody) at dilution of 1:50 and Alexa Fluor 488-Conjugated Goat Anti-Rabbit IgG(H+L).