

For Research Use Only

AP50 Polyclonal antibody

Catalog Number: 27355-1-AP

Featured Product

6 Publications



Basic Information

Catalog Number:

27355-1-AP

Size:

260 µg/ml

Source:

Rabbit

Isotype:

IgG

Immunogen Catalog Number:

AG26059

GenBank Accession Number:

BC013796

GeneID (NCBI):

1173

UNIPROT ID:

Q96CW1

Full Name:

adaptor-related protein complex 2, mu 1 subunit

Calculated MW:

433 aa, 49 kDa

Observed MW:

50 kDa

Purification Method:

Antigen affinity purification

Recommended Dilutions:

WB 1:500-1:2400

IHC 1:50-1:500

Applications

Tested Applications:

WB, IHC, ELISA

Cited Applications:

WB, IHC, IF, IP

Species Specificity:

human, mouse, rat

Cited Species:

human, mouse

Note-IHC: suggested antigen retrieval with TE buffer pH 9.0; (*) Alternatively, antigen retrieval may be performed with citrate buffer pH 6.0

Positive Controls:

WB : mouse brain tissue, HepG2 cells, rat brain tissue

IHC : human kidney tissue,

Background Information

Notable Publications

Author	Pubmed ID	Journal	Application
Juho Pirhonen	36054547	Cancer Res	IHC
Cong-Cong Wu	32564485	Oral Dis	IHC
Ashwinkumar Subramenium Ganapathy	34964704	Autophagy	WB,IF,IP

Storage

Storage:

Store at -20°C. Stable for one year after shipment.

Storage Buffer:

PBS with 0.02% sodium azide and 50% glycerol pH 7.3.

Aliquoting is unnecessary for -20°C storage

For technical support and original validation data for this product please contact:

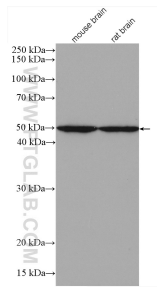
T: 4006900926

E: Proteintech-CN@ptglab.com

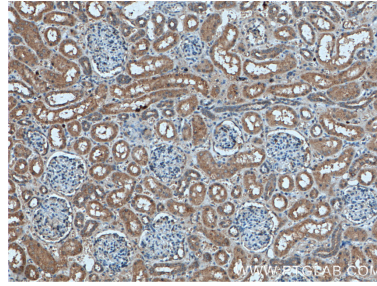
W: ptgcn.com

This product is exclusively available under Proteintech Group brand and is not available to purchase from any other manufacturer.

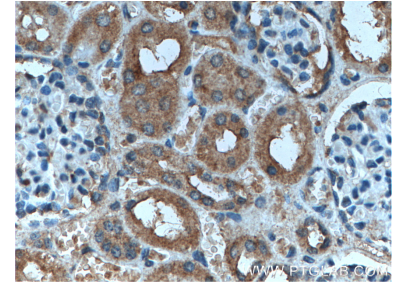
Selected Validation Data



Various lysates were subjected to SDS PAGE followed by western blot with 27355-1-AP (AP50 antibody) at dilution of 1:1200 incubated at room temperature for 1.5 hours.



Immunohistochemical analysis of paraffin-embedded human kidney tissue slide using 27355-1-AP (AP50 antibody) at dilution of 1:200 (under 10x lens. Heat mediated antigen retrieval with Tris-EDTA buffer (pH 9.0).



Immunohistochemical analysis of paraffin-embedded human kidney tissue slide using 27355-1-AP (AP50 antibody) at dilution of 1:200 (under 40x lens. Heat mediated antigen retrieval with Tris-EDTA buffer (pH 9.0).