

For Research Use Only

CHO cells Polyclonal antibody

Catalog Number: 27803-1-AP **2 Publications**



Basic Information

Catalog Number:

27803-1-AP

Size:

4000 µg/ml

Source:

Rabbit

Isotype:

IgG

GenBank Accession Number:

GeneID (NCBI):

Full Name:

Purification Method:

Antigen affinity purification

Recommended Dilutions:

WB 1:500-1:2000

Applications

Tested Applications:

WB, ELISA

Cited Applications:

WB, IF

Species Specificity:

hamster

Cited Species:

human

Positive Controls:

WB : CHO cells,

Background Information

CHO cells (Chinese Hamster Ovary cells) are a laboratory-cultured cell line derived from cells of the ovaries of Chinese hamsters. This antibody is raised by the total CHO cell lysate. It detects all the CHO proteins.

Notable Publications

Author	Pubmed ID	Journal	Application
Shuohui Dong	35898887	Front Oncol	WB
Emma C Couves	36797260	Nat Commun	IF

Storage

Storage:

Store at -20°C. Stable for one year after shipment.

Storage Buffer:

PBS with 0.02% sodium azide and 50% glycerol pH 7.3.

Aliquoting is unnecessary for -20°C storage

For technical support and original validation data for this product please contact:

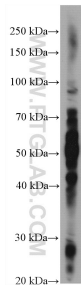
T: 4006900926

E: Proteintech-CN@ptglab.com

W: ptgcn.com

This product is exclusively available under Proteintech Group brand and is not available to purchase from any other manufacturer.

Selected Validation Data



CHO cells were subjected to SDS PAGE followed by western blot with 27803-1-AP (CHO cells antibody) at dilution of 1:1000 incubated at room temperature for 1.5 hours.