

For Research Use Only

CD107b / LAMP2 Polyclonal antibody

Catalog Number: 27823-1-AP

63 Publications



Basic Information

Catalog Number: 27823-1-AP	GenBank Accession Number: BC002965	Purification Method: Antigen affinity purification
Concentration: 1000 µg/ml	GeneID (NCBI): 3920	Recommended Dilutions: WB 1:1000-1:4000 IHC 1:50-1:500
Source: Rabbit	ENSEMBL Gene ID: ENSG00000005893	
Isotype: IgG	UNIPROT ID: P13473	
Immunogen Catalog Number: AG27183	Full Name: lysosomal-associated membrane protein 2	
	Calculated MW: 45 kDa	
	Observed MW: 120 kDa	

Applications

Tested Applications: WB, IHC, ELISA	Positive Controls:
Cited Applications: WB, IHC, IF	WB: HepG2 cells, Jurkat cells, pig liver tissue, human placenta tissue
Species Specificity: Human, Pig	IHC: human liver tissue, human lung cancer tissue
Cited Species: human, pig	
Note-IHC: suggested antigen retrieval with TE buffer pH 9.0; (*) Alternatively, antigen retrieval may be performed with citrate buffer pH 6.0	

Background Information

Lysosomal-associated membrane protein 2 (LAMP2, synonyms: LAMPB, CD107b) is a member of a family of membrane glycoproteins. This glycoprotein provides selectins with carbohydrate ligands. LAMP2 may play a role in tumor cell metastasis. It may also function in the protection, maintenance, and adhesion of the lysosome. Prior to posttranslational modification, LAMP2 is a ~45 kDa polypeptide. Mature, functional LAMP2 is extensively glycosylated with a variety of different N linked and O linked oligosaccharides.

Notable Publications

Author	Pubmed ID	Journal	Application
Angke Zhang	32999030	J Virol	IF
Hanghai Zeng	34530854	J Neuroinflammation	IF
Xingzhi Liu	36270583	Acta Biomater	WB

Storage

Storage:
Store at -20°C. Stable for one year after shipment.
Storage Buffer:
PBS with 0.02% sodium azide and 50% glycerol, pH7.3
Aliquoting is unnecessary for -20°C storage

For technical support and original validation data for this product please contact:

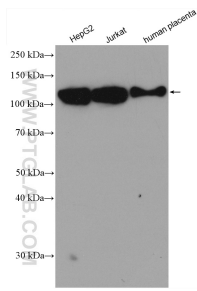
T: 4006900926

E: Proteintech-CN@ptglab.com

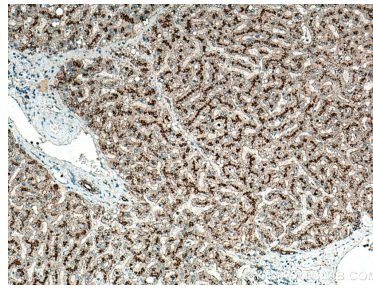
W: ptgcn.com

This product is exclusively available under Proteintech Group brand and is not available to purchase from any other manufacturer.

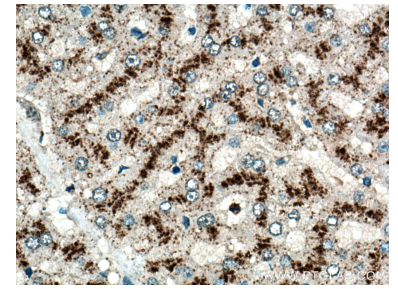
Selected Validation Data



Various lysates were subjected to SDS PAGE followed by western blot with 27823-1-AP (LAMP2 antibody) at dilution of 1:2000 incubated at room temperature for 1.5 hours.



Immunohistochemical analysis of paraffin-embedded human liver tissue slide using 27823-1-AP (LAMP2 antibody) at dilution of 1:200 (under 10x lens). Heat mediated antigen retrieval with Tris-EDTA buffer (pH 9.0).



Immunohistochemical analysis of paraffin-embedded human liver tissue slide using 27823-1-AP (LAMP2 antibody) at dilution of 1:200 (under 40x lens). Heat mediated antigen retrieval with Tris-EDTA buffer (pH 9.0).