

For Research Use Only

WNT1 Polyclonal antibody

Catalog Number: 27935-1-AP

Featured Product

46 Publications



Basic Information

Catalog Number:

27935-1-AP

Size:

600 ug/ml

Source:

Rabbit

Isotype:

IgG

Immunogen Catalog Number:

AG27380

GenBank Accession Number:

BC074799

GeneID (NCBI):

7471

UNIPROT ID:

P04628

Full Name:

wingless-type MMTV integration site family, member 1

Observed MW:

41 kDa

Purification Method:

Antigen affinity purification

Recommended Dilutions:

WB 1:500-1:2000

IF/ICC 1:50-1:500

Applications

Tested Applications:

WB, IF/ICC, FC (Intra), ELISA

Cited Applications:

WB, IHC, IF

Species Specificity:

human, mouse

Cited Species:

human, mouse, rat

Positive Controls:

WB : 3T3-L1 cells, HepG2 cells, NIH/3T3 cells, Jurkat cells

IF/ICC : NIH/3T3 cells, HeLa cells

Background Information

Notable Publications

Author	Pubmed ID	Journal	Application
Zhenyi Han	32032294	Transplantation	WB
Shulei Gong	31661124	Int J Mol Med	WB
Asmita Bhattacharya	36238898	iScience	WB

Storage

Storage:

Store at -20°C. Stable for one year after shipment.

Storage Buffer:

PBS with 0.02% sodium azide and 50% glycerol pH 7.3.

Aliquoting is unnecessary for -20°C storage

For technical support and original validation data for this product please contact:

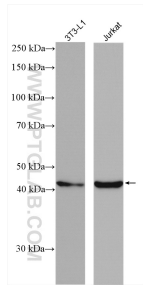
T: 4006900926

E: Proteintech-CN@ptglab.com

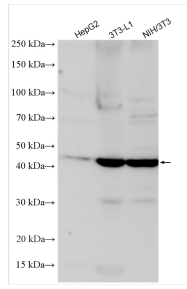
W: ptgcn.com

This product is exclusively available under Proteintech Group brand and is not available to purchase from any other manufacturer.

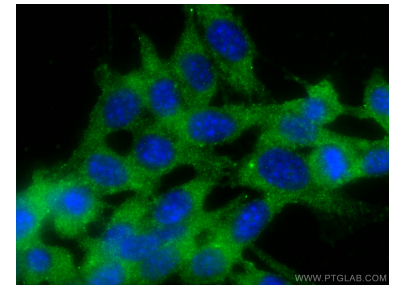
Selected Validation Data



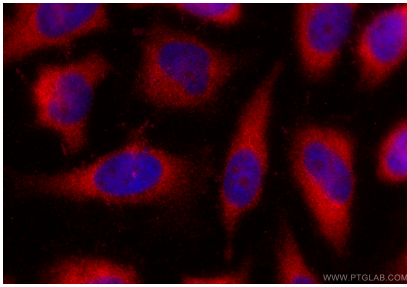
Various lysates were subjected to SDS PAGE followed by western blot with 27935-1-AP (WNT1 antibody) at dilution of 1:1000 incubated at room temperature for 1.5 hours.



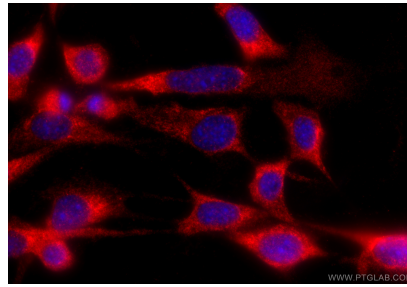
Various lysates were subjected to SDS PAGE followed by western blot with 27935-1-AP (WNT1 antibody) at dilution of 1:1500 incubated at room temperature for 1.5 hours.



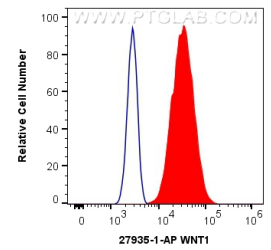
Immunofluorescent analysis of (-20°C Ethanol) fixed NIH/3T3 cells using WNT1 antibody (27935-1-AP) at dilution of 1:200 and CoraLite®488-Conjugated AffiniPure Goat Anti-Rabbit IgG(H+L).



Immunofluorescent analysis of (-20°C Ethanol) fixed HeLa cells using WNT1 antibody (27935-1-AP) at dilution of 1:400 and CoraLite®594-Conjugated Goat Anti-Rabbit IgG(H+L) (SA00013-4).



Immunofluorescent analysis of (-20°C Ethanol) fixed NIH/3T3 cells using WNT1 antibody (27935-1-AP) at dilution of 1:400 and CoraLite®594-Conjugated Goat Anti-Rabbit IgG(H+L) (SA00013-4).



1X10⁶ HeLa cells were intracellularly stained with 0.4 ug Anti-Human WNT1 (27935-1-AP) and CoraLite®488-Conjugated AffiniPure Goat Anti-Rabbit IgG(H+L) at dilution 1:1000 (red), or 0.4 ug Isotype Control. Cells were fixed with 4% PFA and permeabilized with Flow Cytometry Perm Buffer (PF00011-C).