

For Research Use Only

RASEF Polyclonal antibody

Catalog Number: 28162-1-AP

Featured Product



Basic Information

Catalog Number:

28162-1-AP

Source:

Rabbit

IsoType:

IgG

Immunogen Catalog Number:

AG28049

GenBank Accession Number:

BC023566

GeneID (NCBI):

158158

UNIPROT ID:

Q8IZ41

Full Name:

RAS and EF-hand domain containing

Calculated MW:

740 aa, 83 kDa

Observed MW:

90-100 kDa

Purification Method:

Antigen affinity purification

Recommended Dilutions:

WB: 1:1000-1:3000

IHC: 1:200-1:800

Applications

Tested Applications:

WB, IHC, ELISA

Species Specificity:

human, rat

Note-IHC: suggested antigen retrieval with *TE buffer pH 9.0*; (*) Alternatively, antigen retrieval may be performed with *citrate buffer pH 6.0*

Positive Controls:

WB: LNCaP cells, PC-12 cells

IHC: human stomach tissue, human intrahepatic cholangiocarcinoma tissue

Background Information

RASEF, or RAS and EF-hand domain-containing protein, is a member of the Rab GTPase protein family. RASEF is a protein with significant implications in lung cancer, potentially serving as both a prognostic biomarker and a therapeutic target. Its role in cancer cell growth and its interaction with ERK1/2 signaling make it a promising candidate for further research and development of new molecular therapies in lung cancer treatment.

Storage

Storage:

Store at -20°C. Stable for one year after shipment.

Storage Buffer:

PBS with 0.02% sodium azide and 50% glycerol, pH7.3

Aliquoting is unnecessary for -20°C storage

For technical support and original validation data for this product please contact:

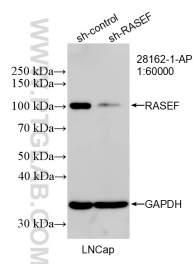
T: 4006900926

E: Proteintech-CN@ptglab.com

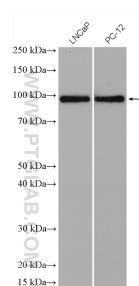
W: ptgcn.com

This product is exclusively available under Proteintech Group brand and is not available to purchase from any other manufacturer.

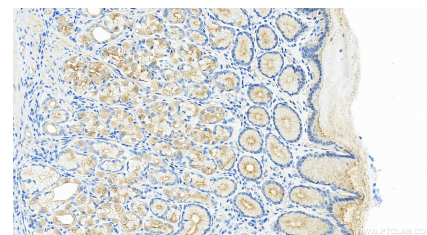
Selected Validation Data



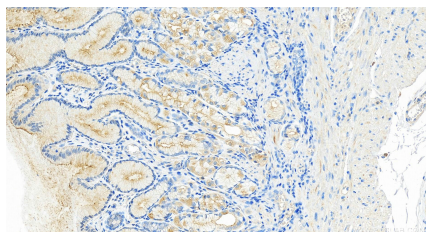
WB result of RASEF antibody (28162-1-AP; 1:60000; incubated at room temperature for 1.5 hours) with sh-Control and sh-RASEF transfected LNCaP cells.



Various lysates were subjected to SDS PAGE followed by western blot with 28162-1-AP (RASEF antibody) at dilution of 1:2000 incubated at room temperature for 1.5 hours.



Immunohistochemical analysis of paraffin-embedded human stomach tissue slide using 28162-1-AP (RASEF antibody) at dilution of 1:400 (under 20x lens). Heat mediated antigen retrieval with Tris-EDTA buffer (pH 9.0).



Immunohistochemical analysis of paraffin-embedded human stomach tissue slide using 28162-1-AP (RASEF antibody) at dilution of 1:400 (under 20x lens). Heat mediated antigen retrieval with Tris-EDTA buffer (pH 9.0).