

For Research Use Only

# MRPL39 Polyclonal antibody

Catalog Number: 28165-1-AP **3 Publications**



## Basic Information

<b>Catalog Number:</b> 28165-1-AP	<b>GenBank Accession Number:</b> BC107719	<b>Purification Method:</b> Antigen affinity purification
<b>Concentration:</b> 450 ug/ml	<b>GeneID (NCBI):</b> 54148	<b>Recommended Dilutions:</b> WB 1:1000-1:6000
<b>Source:</b> Rabbit	<b>UNIPROT ID:</b> Q9NYK5	IHC 1:50-1:500 IF/ICC 1:50-1:500
<b>Isotype:</b> IgG	<b>Full Name:</b> mitochondrial ribosomal protein L39	
<b>Immunogen Catalog Number:</b> AG27154	<b>Calculated MW:</b> 338 aa, 39 kDa	
	<b>Observed MW:</b> 35-40 kDa	

## Applications

<b>Tested Applications:</b> WB, IHC, IF/ICC, ELISA	<b>Positive Controls:</b> WB : HepG2 cells, mouse heart tissue, mouse testis tissue, rat testis tissue
<b>Cited Applications:</b> WB	<b>IHC :</b> human liver tissue,
<b>Species Specificity:</b> human, mouse, rat	<b>IF/ICC :</b> HepG2 cells,
<b>Cited Species:</b> human	

**Note-IHC: suggested antigen retrieval with TE buffer pH 9.0; (\*) Alternatively, antigen retrieval may be performed with citrate buffer pH 6.0**

## Background Information

### Notable Publications

Author	Pubmed ID	Journal	Application
Xujun Liu	34728602	Signal Transduct Target Ther	WB
Shabnam Bakhshalizadeh	37148394	Hum Genet	WB
Sumudu S C Amarasekera	37133451	Hum Mol Genet	WB

## Storage

**Storage:**  
Store at -20°C. Stable for one year after shipment.  
**Storage Buffer:**  
PBS with 0.02% sodium azide and 50% glycerol pH 7.3.  
Aliquoting is unnecessary for -20°C storage

For technical support and original validation data for this product please contact:

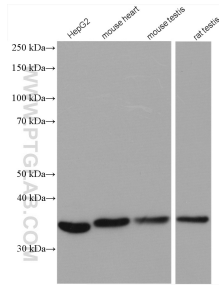
T: 4006900926

E: Proteintech-CN@ptglab.com

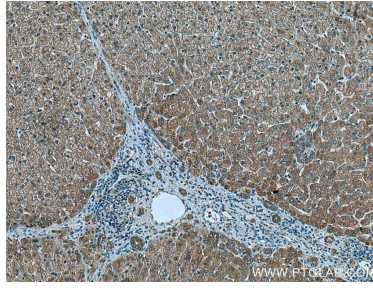
W: ptgcn.com

**This product is exclusively available under Proteintech Group brand and is not available to purchase from any other manufacturer.**

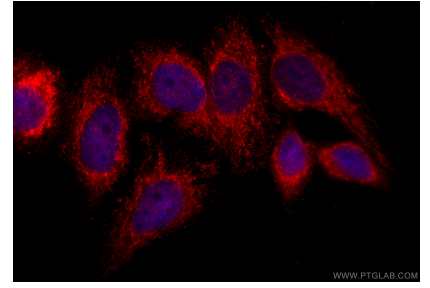
## Selected Validation Data



Various lysates were subjected to SDS PAGE followed by western blot with 28165-1-AP (MRPL39 antibody) at dilution of 1:3000 incubated at room temperature for 1.5 hours.



Immunohistochemical analysis of paraffin-embedded human liver tissue slide using 28165-1-AP (MRPL39 antibody) at dilution of 1:200 (under 10x lens). Heat mediated antigen retrieval with Tris-EDTA buffer (pH 9.0).



Immunofluorescent analysis of (-20°C Ethanol) fixed HepG2 cells using MRPL39 antibody (28165-1-AP) at dilution of 1:200 and CoraLite@594-Conjugated Goat Anti-Rabbit IgG(H+L) (SA00013-4).