

For Research Use Only

ACPP Monoclonal antibody

Catalog Number: 60176-1-Ig **1 Publications**



Basic Information

| | | |
|--|---|---|
| Catalog Number: 60176-1-Ig | GenBank Accession Number: BC007460 | Purification Method: Protein A purification |
| Size: 1600 µg/ml | GeneID (NCBI): 55 | CloneNo.: 1G2C9 |
| Source: Mouse | UNIPROT ID: P15309 | Recommended Dilutions: WB 1:1000-1:6000 IHC 1:500-1:2000 IF-P 1:200-1:800 |
| Isotype: IgG2a | Full Name: acid phosphatase, prostate | |
| Immunogen Catalog Number: AG8578 | Calculated MW: 418 aa, 48 kDa | |
| | Observed MW: 45-50 kDa | |

Applications

| | |
|---|--|
| Tested Applications: WB, IF-P, IHC, ELISA | Positive Controls: WB : K-562 cells, human testis tissue |
| Cited Applications: WB | IHC : human prostate hyperplasia tissue, |
| Species Specificity: human, rat | IF-P : human prostate cancer tissue, |
| Cited Species: human | |

Note-IHC: suggested antigen retrieval with TE buffer pH 9.0; (*) Alternatively, antigen retrieval may be performed with citrate buffer pH 6.0

Background Information

ACPP is also named as PAP(prostatic acid phosphatase),5'-nucleotidase,thiamine monophosphatas and Belongs to the histidine acid phosphatase family.This enzyme is a homodimeric glycoprotein with a subunit molecular mass of 50 kDa and is an androgen-stimulated secretory product of the human prostate gland(PMID:8132635).It is also a non-specific phosphatase and has been implicated in the progression of prostate cancer, which inactivates LPA in human seminal plasma(PMID:15280042). This protein has three glycosylation sites(PMID:10639192;12525165).

Notable Publications

| Author | Pubmed ID | Journal | Application |
|------------|-----------|-----------------------------|-------------|
| Chong Wang | 35185790 | Front Endocrinol (Lausanne) | WB |

Storage

Storage:
Store at -20°C. Stable for one year after shipment.
Storage Buffer:
PBS with 0.02% sodium azide and 50% glycerol pH 7.3.
Aliquoting is unnecessary for -20°C storage

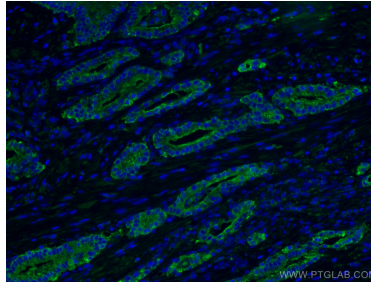
For technical support and original validation data for this product please contact:
T: 4006900926 E: Proteintech-CN@ptglab.com W: ptgcn.com

This product is exclusively available under Proteintech Group brand and is not available to purchase from any other manufacturer.

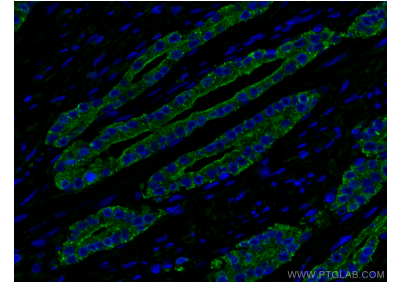
Selected Validation Data



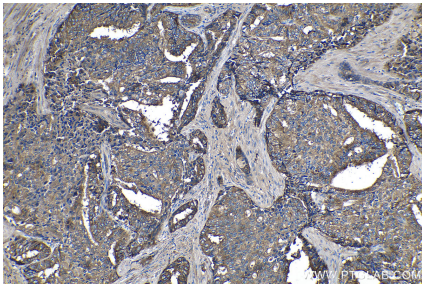
K-562 cells were subjected to SDS PAGE followed by western blot with 60176-1-Ig (ACPP Antibody) at dilution of 1:3000 incubated at room temperature for 1.5 hours.



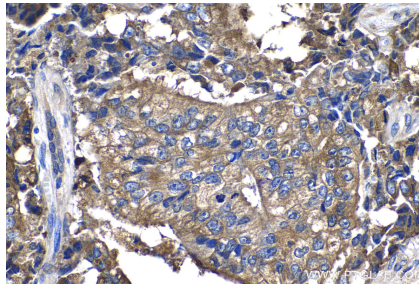
Immunofluorescent analysis of (4% PFA) fixed human prostate cancer tissue using ACPP antibody (60176-1-Ig, Clone: 1G2C9) at dilution of 1:400 and CoraLite® 488-Conjugated AffiniPure Goat Anti-Mouse IgG(H+L).



Immunofluorescent analysis of (4% PFA) fixed human prostate cancer tissue using ACPP antibody (60176-1-Ig, Clone: 1G2C9) at dilution of 1:400 and CoraLite® 488-Conjugated AffiniPure Goat Anti-Mouse IgG(H+L).



Immunohistochemical analysis of paraffin-embedded human prostate hyperplasia tissue slide using 60176-1-Ig (ACPP antibody) at dilution of 1:1000 (under 10x lens).



Immunohistochemical analysis of paraffin-embedded human prostate hyperplasia tissue slide using 60176-1-Ig (ACPP antibody) at dilution of 1:1000 (under 40x lens).