

For Research Use Only

Cytokeratin 20 Monoclonal antibody

Catalog Number: 60183-1-Ig **5 Publications**



Basic Information

Catalog Number: 60183-1-Ig	GenBank Accession Number: BC031559	Purification Method: Protein A purification
Concentration: 1200 ug/ml	GeneID (NCBI): 54474	CloneNo.: 4D10A4
Source: Mouse	UNIPROT ID: P35900	Recommended Dilutions: WB 1:500-1:2000 IHC 1:1000-1:51200 IF-P 1:200-1:800 IF/ICC 1:400-1:1600
Isotype: IgG2b	Full Name: keratin 20	
Immunogen Catalog Number: AG11336	Calculated MW: 424 aa, 48 kDa Observed MW: 46 kDa	

Applications

Tested Applications: WB, IHC, IF/ICC, IF-P, ELISA	Positive Controls: WB : Colo320 cells, COLO 320 cells
Cited Applications: IHC, IF	IHC : human colon tissue, human appendicitis tissue, human colon cancer tissue, human urothelial carcinoma tissue
Species Specificity: human	IF-P: human colon tissue,
Cited Species: human, mouse	IF/ICC : HT-29 cells,

Note-IHC: suggested antigen retrieval with TE buffer pH 9.0; (*) Alternatively, antigen retrieval may be performed with citrate buffer pH 6.0

Background Information

Keratins are a large family of proteins that form the intermediate filament cytoskeleton of epithelial cells. Keratin expression is highly regulated, tissue specific, and varies according to cell-state. Type I keratins consist of acidic, low molecular weight proteins with MW ranging from 40 kDa (KRT19) to 64 kDa (KRT9). Type 2 keratins consist of basic or neutral, high molecular weight proteins with MW from 52 kDa (KRT8) to 67 kDa (KRT18). Keratin 20 is a type I cytokeratin. It is a major cellular protein of mature enterocytes and goblet cells and is specifically found in the gastric and intestinal mucosa.

Notable Publications

Author	Pubmed ID	Journal	Application
Yoshiya Asano	29032203	Biochem Biophys Res Commun	IF
Yuli Wang	29693040	Cell Mol Gastroenterol Hepatol	IF
Lijun Hu	34093546	Front Immunol	IF

Storage

Storage:
Store at -20°C. Stable for one year after shipment.
Storage Buffer:
PBS with 0.02% sodium azide and 50% glycerol, pH7.3
Aliquoting is unnecessary for -20°C storage

For technical support and original validation data for this product please contact:

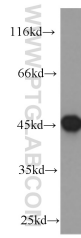
T: 4006900926

E: Proteintech-CN@ptglab.com

W: ptgcn.com

This product is exclusively available under Proteintech Group brand and is not available to purchase from any other manufacturer.

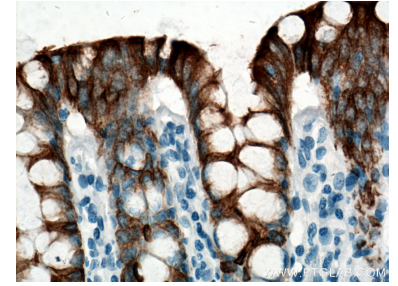
Selected Validation Data



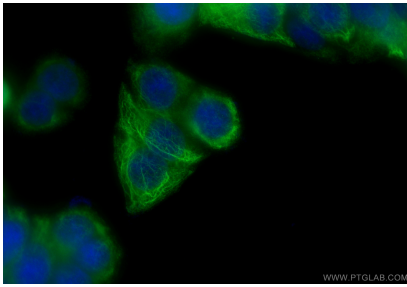
COLO 320 cells were subjected to SDS PAGE followed by western blot with 60183-1-Ig (Cytokeratin 20 antibody) at dilution of 1:1000 incubated at room temperature for 1.5 hours.



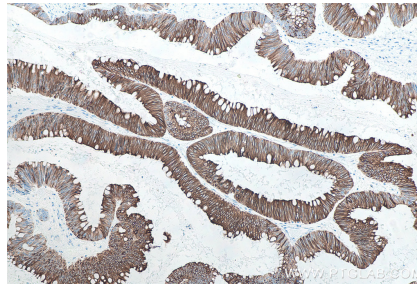
Immunohistochemical analysis of paraffin-embedded human colon tissue slide using 60183-1-Ig (Cytokeratin 20 antibody) at dilution of 1:51200 (under 10x lens). Heat mediated antigen retrieval with Tris-EDTA buffer (pH 9.0).



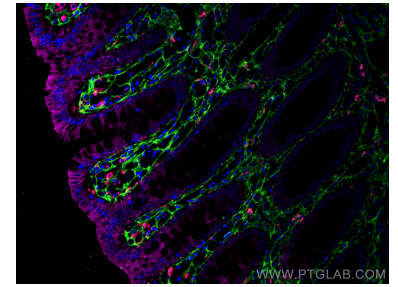
Immunohistochemical analysis of paraffin-embedded human colon tissue slide using 60183-1-Ig (Cytokeratin 20 antibody) at dilution of 1:51200 (under 40x lens). Heat mediated antigen retrieval with Tris-EDTA buffer (pH 9.0).



Immunofluorescent analysis of (-20°C Ethanol) fixed HT-29 cells using Cytokeratin 20 antibody (60183-1-Ig, Clone: 4D10A4) at dilution of 1:800 and CoraLite®488-Conjugated Goat Anti-Mouse IgG(H+L) (SA00013-1).



Immunohistochemical analysis of paraffin-embedded human colon cancer tissue slide using 60183-1-Ig (Cytokeratin 20 antibody) at dilution of 1:2000 (under 10x lens). Heat mediated antigen retrieval with Tris-EDTA buffer (pH 9.0).



Immunofluorescent analysis of (4% PFA) fixed human colon tissue using Cytokeratin 20 antibody (60183-1-Ig, Clone: 4D10A4) at dilution of 1:400 and CoraLite®647-Conjugated AffiniPure Goat Anti-Mouse IgG(H+L), Collagen Type III (N-terminal) antibody (22734-1-AP, green), CoraLite®594 CD68 antibody (CL594-25747, red).