

For Research Use Only

LIN28A Monoclonal antibody

Catalog Number: 60344-1-Ig **2 Publications**



Basic Information

Catalog Number: 60344-1-Ig	GenBank Accession Number: BC028566	Purification Method: Protein G purification
Concentration: 2300 ug/ml	GeneID (NCBI): 79727	CloneNo.: 4F5G6
Source: Mouse	UNIPROT ID: Q9H9Z2	Recommended Dilutions: WB 1:500-1:2000 IHC 1:50-1:500 IF-P 1:200-1:800
Isotype: IgG1	Full Name: lin-28 homolog (C. elegans)	
Immunogen Catalog Number: AG2312	Calculated MW: 209 aa, 23 kDa	
	Observed MW: 28 kDa	

Applications

Tested Applications: WB, IHC, IF-P, ELISA	Positive Controls: WB : NCCIT cell, IHC : human prostate cancer tissue, IF-P : human prostate cancer tissue,
Cited Applications: WB	
Species Specificity: human	
Cited Species: human, mouse	

Note-IHC: suggested antigen retrieval with TE buffer pH 9.0; (*) Alternatively, antigen retrieval may be performed with citrate buffer pH 6.0

Background Information

LIN28 is one of the four key human factors (OCT4, SOX2, NANOG and LIN28) used to reprogram human fibroblasts to an embryonic stem (ES) cell-like state known as the induced pluripotent stem (Ips) cell. LIN28 is a marker of undifferentiated human embryonic stem cells and a cytoplasmic mRNA-binding protein that binds to and enhances the translation of the IGF2 mRNA. LIN28 has also been shown to bind to the let-7 pre-miRNA and block production of the mature let-7 microRNA in mouse embryonic stem cells. The calculated molecular weight of LIN28 is 23 kDa, but the modified LIN28 is about 28 kDa.

Notable Publications

Author	Pubmed ID	Journal	Application
Wanming He	30742067	Oncogene	WB
Miki Hara-Yokoyama	31424977	J Histochem Cytochem	

Storage

Storage:
Store at -20°C. Stable for one year after shipment.
Storage Buffer:
PBS with 0.02% sodium azide and 50% glycerol pH 7.3.
Aliquoting is unnecessary for -20°C storage

For technical support and original validation data for this product please contact:

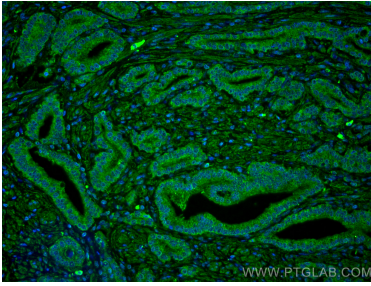
T: 4006900926

E: Proteintech-CN@ptglab.com

W: ptgcn.com

This product is exclusively available under Proteintech Group brand and is not available to purchase from any other manufacturer.

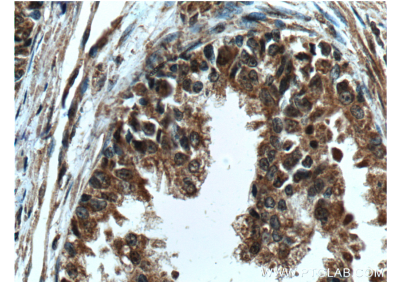
Selected Validation Data



Immunofluorescent analysis of (4% PFA) fixed human prostate cancer tissue using LIN28 antibody (60344-1-Ig, Clone: 4F5G6) at dilution of 1:400 and CoraLite@488-Conjugated AffiniPure Goat Anti-Mouse IgG(H+L).



NCCIT cell were subjected to SDS PAGE followed by western blot with 60344-1-Ig (LIN28 antibody) at dilution of 1:1000 incubated at room temperature for 1.5 hours.



Immunohistochemical analysis of paraffin-embedded human prostate cancer tissue slide using 60344-1-Ig (LIN28 Antibody) at dilution of 1:200 (under 40x lens). Heat mediated antigen retrieval with Tris-EDTA buffer (pH 9.0).