

For Research Use Only

# CD22 Monoclonal antibody

Catalog Number: 66103-1-Ig **1 Publications**



## Basic Information

<b>Catalog Number:</b> 66103-1-Ig	<b>GenBank Accession Number:</b> BC109306	<b>Purification Method:</b> Protein A purification
<b>Concentration:</b> 3400 ug/ml	<b>GeneID (NCBI):</b> 933	<b>CloneNo.:</b> 7A2F1
<b>Source:</b> Mouse	<b>UNIPROT ID:</b> P20273	<b>Recommended Dilutions:</b> WB 1:2500-1:10000 IHC 1:10000-1:40000 IF-P 1:200-1:800 IF/ICC 1:400-1:1600
<b>Isotype:</b> IgG2a	<b>Full Name:</b> CD22 molecule	
<b>Immunogen Catalog Number:</b> AG17986	<b>Calculated MW:</b> 847 aa, 95 kDa	
	<b>Observed MW:</b> 135 kDa	

## Applications

<b>Tested Applications:</b> WB, IHC, IF/ICC, IF-P, ELISA	<b>Positive Controls:</b> WB : Ramos cells, Raji cells, Daudi cells IHC : human tonsillitis tissue, human appendicitis tissue IF-P : human tonsillitis tissue, Raji cells IF/ICC : Raji cells,
<b>Cited Applications:</b> IF	
<b>Species Specificity:</b> human	
<b>Cited Species:</b> human	

**Note-IHC: suggested antigen retrieval with TE buffer pH 9.0; (\*) Alternatively, antigen retrieval may be performed with citrate buffer pH 6.0**

## Background Information

CD22, also known as Siglec-2 (sialic acid binding Ig-like lectin 2) or BL-CAM (B-lymphocyte cell adhesion molecule), is a 130-140 kDa, B-cell restricted, type I transmembrane glycoprotein belonging to the immunoglobulin gene superfamily. The expression of CD22 is developmentally regulated. It is expressed at low levels in the cytoplasm of pro-B and pre-B cells and present on the cell surface only at mature stages of B-cell differentiation. Cell surface expression is lost during terminal differentiation into plasma cell and after B-cell activation. CD22 is an inhibitory receptor for B-cell receptor (BCR) signalling, preferentially binds to alpha-2,6-linked sialic acid and mediates B-cell B-cell interactions. It plays a crucial role in activation and differentiation of the B-cell.

## Notable Publications

Author	Pubmed ID	Journal	Application
Sumeng Wang	38111199	J Biomed Res	IF

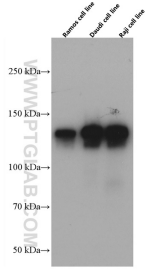
## Storage

**Storage:**  
Store at -20°C. Stable for one year after shipment.  
**Storage Buffer:**  
PBS with 0.02% sodium azide and 50% glycerol, pH7.3  
Aliquoting is unnecessary for -20°C storage

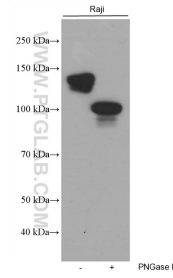
For technical support and original validation data for this product please contact:  
T: 4006900926 E: Proteintech-CN@ptglab.com W: ptgcn.com

**This product is exclusively available under Proteintech Group brand and is not available to purchase from any other manufacturer.**

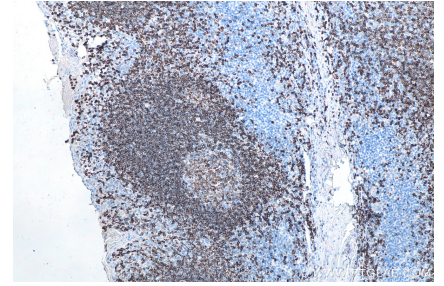
## Selected Validation Data



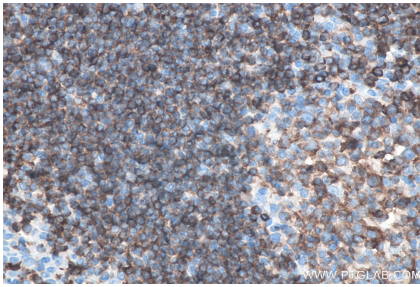
Ramos, Daudi, and Raji cells were subjected to SDS PAGE followed by western blot with 66103-1-Ig (CD22 antibody) at dilution of 1:5000 incubated at room temperature for 1.5 hours.



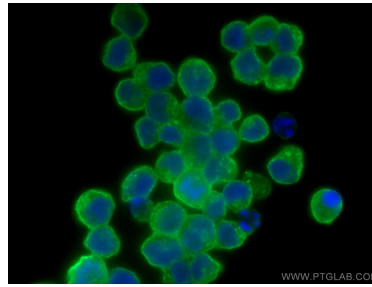
Untreated and PNGase F-treated lysates of Raji cells were subjected to SDS PAGE followed by western blot with 66103-1-Ig (CD22 antibody) at dilution of 1:20000 incubated at room temperature for 1.5 hours. PNGase F was obtained from Atagenix (cat.NO. ata808).



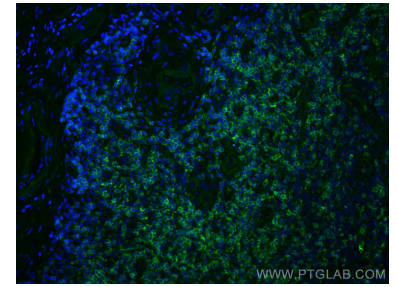
Immunohistochemical analysis of paraffin-embedded human tonsillitis tissue slide using 66103-1-Ig (CD22 antibody) at dilution of 1:20000 (under 10x lens). Heat mediated antigen retrieval with Tris-EDTA buffer (pH 9.0).



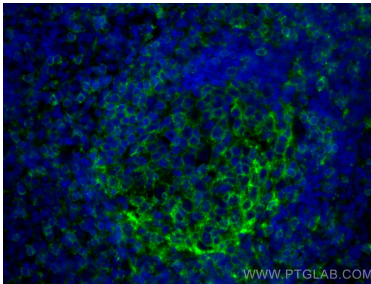
Immunohistochemical analysis of paraffin-embedded human tonsillitis tissue slide using 66103-1-Ig (CD22 antibody) at dilution of 1:20000 (under 40x lens). Heat mediated antigen retrieval with Tris-EDTA buffer (pH 9.0).



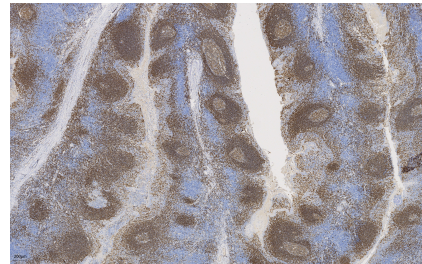
Immunofluorescent analysis of (4% PFA) fixed Raji cells using CD22 antibody (66103-1-Ig, Clone: 7A2F1) at dilution of 1:800 and CoraLite@488-Conjugated AffiniPure Goat Anti-Mouse IgG(H+L).



Immunofluorescent analysis of (4% PFA) fixed human tonsillitis tissue using CD22 antibody (66103-1-Ig, Clone: 7A2F1) at dilution of 1:400 and CoraLite@488-Conjugated AffiniPure Goat Anti-Mouse IgG(H+L).



Immunofluorescent analysis of (4% PFA) fixed human tonsillitis tissue using CD22 antibody (66103-1-Ig, Clone: 7A2F1) at dilution of 1:400 and CoraLite@488-Conjugated AffiniPure Goat Anti-Mouse IgG(H+L).



Immunohistochemical analysis of paraffin-embedded human tonsillitis tissue slide using 66103-1-Ig (CD22 antibody) at dilution of 1:20000 (under 4x lens). Heat mediated antigen retrieval with Tris-EDTA buffer (pH 9.0).